

County COLLECTION

Clever designs for residential homes, lifestyle villages, weekenders and secondary dwellings



The Asset Advantage

When you buy from Asset, you have the benefit of over 27 years experience in the modular building industry.

We help with:

- ✓ Carefully managed production facilities to produce to your exact specifications
- ✓ Maximising energy efficiency in your new building to minimise your running costs
- ✓ Optimising sloping sites to save on scaffolding costs
- ✓ Expediting council applications and approvals
- ✓ Installation on difficult sites
- ✓ Disability and assisted access facilities
- ✓ Lower maintenance costs due to thoughtful design and detail
- ✓ On-time construction from our undercover facilities
- ✓ Streamlined manufacture process with the savings being passed straight back to you



No hidden surprises

We work on a policy of having a 'No Hidden Surprises' contract.



8 year structural warranty

We build to full residential building standards to ensure compliance with the National Construction Code and we back it with an 8 year structural warranty.



Flexible designs

We have flexibility in our designs to suit your specific needs.



Welcome to our County Collection



Thank you very much for your interest in our offering! We hope you enjoy browsing this brochure discovering style, distinction, versatility and above all, opportunities for you.

We extend an invitation to you to drop in to our display homes, and spend time with our experienced team. You will soon discover from them, how easy it is and how happy we are to cater to your specific needs.

Remember that this brochure is really a small representation of our capacity, work and options. Whatever your building project is, reach out to our friendly team, we're looking forward to working with you more!

All the best,

Ben Woodford

Managing Director

Our Company

Since 2005, Asset Cabins & Homes has been bringing quality products to the modular market. Experience, value and support are three words that express Asset Cabins & Homes today. Our mission is to provide a good building experience for our customers, create proficiency through culture driven strategies and create a work environment where everyone benefits, including the community.

As a keen spirited team, we love any idea of a challenge or a big dream... in modular form. It's what propels us to keep going, helping customers express their visions, personalities, and values. We're happy to support so many local team members.

Each one plays a vital role in bringing together your project... as we know, your team is your biggest asset!

2012 brought with it a new premises for Asset Cabins & Homes, with over 1660 square metres of undercover construction area, this has helped us launch onwards and upwards to the future with the vision to be the most trusted advisor and supplier of modular cabins & homes in the industry... providing innovative, highly sought-after products and project solutions that help our clients achieve their goals. With over 600 buildings under the lovely Queensland sun, we invite you to join our list of happy customers!

Everyone is of value to us.







Contents

The Asset Advantage	2
Welcome	3
Contents	5
Product Reference	6
Client Care	8
Quality Assured	8
Custom Built Kitchens	9
Made for You	10
Facades	12
The Asset Approach	14

Plans

Hampshire	16
Wiltshire	17
Kent 1	18
Hereford	19
Dorset	20
Surrey	21
Suffolk 1	22
Suffolk 2	23
Preston	24
Essex	25
Devon 1	26
Clovelly	27
Norfolk	28
Sussex 1	29
Sussex 2	30
Yorkshire 1	31
Kent 2	32
Somerset	33
Devon 2	34
Oxford 1	35
Oxford 2	36
Newton	37
Berkshire 1	38
Berkshire 2	39
Yorkshire 2	40
Cotswold 1	41
Cheshire	42
Cornwall 1	43
Cornwall 2	44
Cornwall 3	45
Cotswold 2	46
Windsor	47
Windsor Loft	48
Windsor Loft detail	49
Why not customise?	50

3D Cutaway

A guide to typical Product Identification

At Asset Cabins and Homes we use a majority (96%) of Australian made componentry in our build. From the steel base to the roof, you can have the assurance your build is quality Aussie built!



We also use the best quality materials and great brands such as Bluescope Colorbond steel products, Weathertex cladding and Dulux washable paints for our cabins and homes to deliver the performance, longevity and reliability that our customers can depend on.



Key

- 1** Engineer Designed Footings & Stumps - 450mm diameter x 900mm deep concrete pier footings under each stump
- 2** 75 x 75mm x 4.0mm galvanized steel stumps
- 3** Heavy Duty Steel Chassis Beams
- 4** Steel Floor Joists & Bracing
- 5** Termite treated 22mm moisture resistant Particle Board Flooring
- 6** FC Flooring to bathroom
- 7** Termite treated pine framing
- 8** Painted Plasterboard walls & ceilings
- 9** Wall Insulation Batts
- 10** Termite treated hardwood Wall Bracing
- 11** Sisalation Building Paper



- 1** Concrete foundation
- 2** 100mm concrete base
- 3** Aluminium cladding
- 4** 100mm concrete base
- 5** 100mm concrete base
- 6** 100mm concrete base
- 7** 100mm concrete base
- 8** 100mm concrete base
- 9** 100mm concrete base
- 10** 100mm concrete base
- 11** 100mm concrete base
- 12** Ceiling Insulation Batts
- 13** Painted Weathertex Cladding
- 14** Termite treated pine rafters
- 15** Foil-backed 75mm Anticon Roofing Insulation blanket
- 16** Colorbond Custom Orb roof sheeting
- 17** Colorbond fascia & guttering
- 18** Aluminium Window & Door Frames with Tinted windows
- 19** Maintenance free 'Composite' Decking
- 20** Sub-floor skirting (optional)
- 21** Aluminium step treads & hot dipped galvanised stringers

Client Care

Asset Cabins and Homes are committed to providing a world class product, backed up by our dedication to client satisfaction and exceptional service.

If there are any further questions you may have about your Asset product or need some guidance in planning for whatever your use will be, our team stands ready to assist you.



Quality Assured

You'll have peace of mind, because every Asset Cabin and Home has a rigid steel base and termite-treated or steel frame. Assembly is conducted inside our factory, not outside where exposure to the weather can cause problems later.

Of course, standard features include cyclone ratings and soil testing for structural integrity and materials choice to weather our harsh climate zones.

You can expect many years of dependable service and minimal maintenance with Asset's modular cabins and homes. They're constructed to the highest standard, and they fully comply with the relevant Queensland building legislation.

The service continues after installation, with 12 months' free maintenance and an 8-year structural warranty. All residential construction work is covered by the Queensland Building and Construction Commission Insurance scheme.



Walk-in showers



Optional Stone benchtops for a luxurious feel

Custom built kitchens

Asset Cabins and Homes create beautiful interior environments that suit your style and budget.



Made for you

Every Asset Cabins and Homes project is different as every home is easily custom made for its new owner.



Our expert Creative Services team can help you to choose colour schemes, materials and appliances. We'll also give you practical advice to maximise space perception and minimise maintenance.



Facades

Our County Collection features a range of facade options. Upgrade any floor plan with a facade of your choice.

Classic

The **Classic** has been an Asset favourite over and over again. With a 14° pitch to the roof, you'll find this gives the perfect cathedral ceiling on the inside. Being a single gable is not to say it has to be boring... Our Sussex I design pictured to the right shows just how to wear the look beautifully. A great solution for every home design!



Timeless

Always a popular look to give your home a custom feel! The **Timeless** look emphasizes the feature in your floor plan and brings feature to the facade in more ways than one. Not only giving opportunity for multiple roof faces, this design gives potential to feature gable designs to suit any style! We love how the **Timeless** has lent itself to the traditional Queenslander look that the Essex does so beautifully. An ideal facade look to have when character is the call of the day!



Cube*

Going all out with the modern rage look where everything is square. The **Cube** facade takes a floorplan from great to jaw dropping looks with no dramas. This facade allows for 9ft ceilings, a feature not always possible in other facade looks on modular homes! The modern feel of the **Cube** facade will have neighbours struggling to believe this is a modular home!



Skyline

A style that can never go wrong, the **Skyline** offers so much potential on the inside and out. Giving a real sense of space to the interior of the home, you'll be surprised at how much the external changes the internal! The **Skyline** has the potential to express so many different looks, and is the perfect facade to go for when you want to break away from the ordinary.



Coastal

One of the most popular facade looks, the **Coastal** is consistently a best seller! The high roof allows for a soaring ceiling, adding space and bringing a prestigious feel of size to the internals, no matter what size the home is. The **Coastal** embraces so many styles, preferences and designs that you really can't go wrong with. Add some narrow upper windows to stream some light into a living area! An aesthetically pleasing look, you'll have people glancing twice when they see a **Coastal** home.



Berkshire 2

Traditional*

The **Traditional** facade, utilizing a hip roof, this design has never gone out of style. A true classic look, that will never go away. This **Traditional** facade sings from the country and expresses a culturally relative feel to every Australian. A truly loved façade look!

Check out the **Traditional** dutch gable look shown on the Clovelly design on page 27. A dutch gable is a Queenslander special and lives on!



Oxford 2

Loft*

The **Loft** look. What more needs to be said? A favorite with every age... a **loft** adds so much character to every home it places itself on. Presenting the opportunity for dormer windows and a roofline full of character, you'll find everyone loves the look of a **Loft** home, there's something in everyone that screams - I want those dormer windows! Not limited in its potential, you can add the higher pitch and Loft to whatever design you like!

** Check with your design consultant as some of these designs work best with level ceilings throughout in lieu of cathedral ceilings*



Windsor Loft

Make it yours..

Garage

Carport

You can get creative on the following pages just like we have!

You could upgrade your window size to the front, add a carport, add some window awnings, wall features, stained timber entry door, cladding choice, external lights, timber steps or platforms, gable infill features, bullnose verandah, external tile features, balustrade choice, wider stairs, a toolshed or sub-floor skirting We make it the way you want it!



The Asset Approach

Our 7 Steps to client satisfaction ensure your building project is a successful and positive experience with a rewarding outcome.

1 Analysis

The better we understand your needs, the more we can provide exceptional solutions; so we start with an in-depth analysis of your requirements and site.

A site visit is also taken to make sure we are aware of all aspects of your home requirements and assist you to take advantage of the best orientation to maximise environmental benefits.

2 Initial Design & Specifications

Our expert team can design and specify an initial concept based on our understanding of your needs and incorporate any additional requests.

3 Final Design & Proposal

After working together to achieve a design and specification solution that fulfils your vision, a detailed fixed price proposal is then finalised to allow you to move ahead to make your vision a reality.

4 Colour & Finishes Selections and Building Approvals

Our team can offer guidance and advice on colours and finishes plus we can tailor your project to your specific tastes and requirements.

We also take care of whatever steps the Building Approval Process requires.

5 Construction

Based on your documented selections and approvals, we then move into our streamlined construction phase. You are kept informed of progress and we welcome your inspection at any time.

6 Delivery & Installation

Once construction is complete our specialist team deliver your new cabin or home to your site and complete all installation works.

7 Final Details

After completed installation the building is inspected in detail to ensure your satisfaction and a Building Certificate is provided.





Dream home
location



Our range of fully
customisable floor plans
are designed to meet
your requirements and
exceed your expectations



Facade Shown Timeless



Hampshire

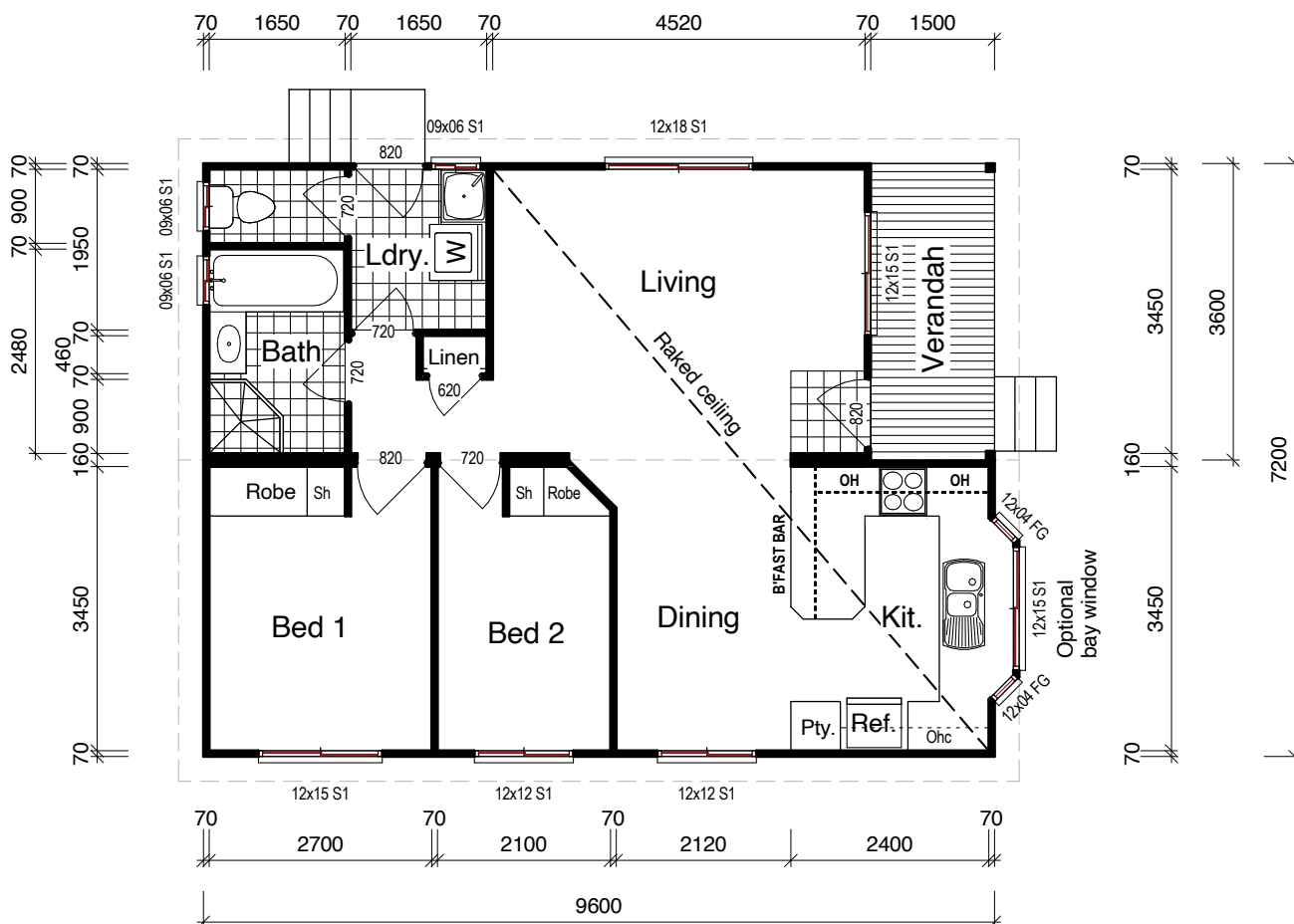
Main Floor: **63.71m²**
 Verandah: **5.41m²**
Total: 69.12m²
 Width: **7.2m**

The Hampshire is a two-bedroom premium modular home with a full measure of style.

It's apparent as soon as you enter the spacious open-plan dining/living area featuring a dramatic raked ceiling and reinforced by the fully equipped kitchen with a pantry.

The two generous bedrooms have built-in wardrobes, while the separate bathroom, toilet and full-sized laundry add to this compact home's appeal.

With a smart design utilizing the space available to the best ability, the Hampshire design home really demonstrates how living premium can easily be achieved!





Façade Shown Coastal



Wiltshire

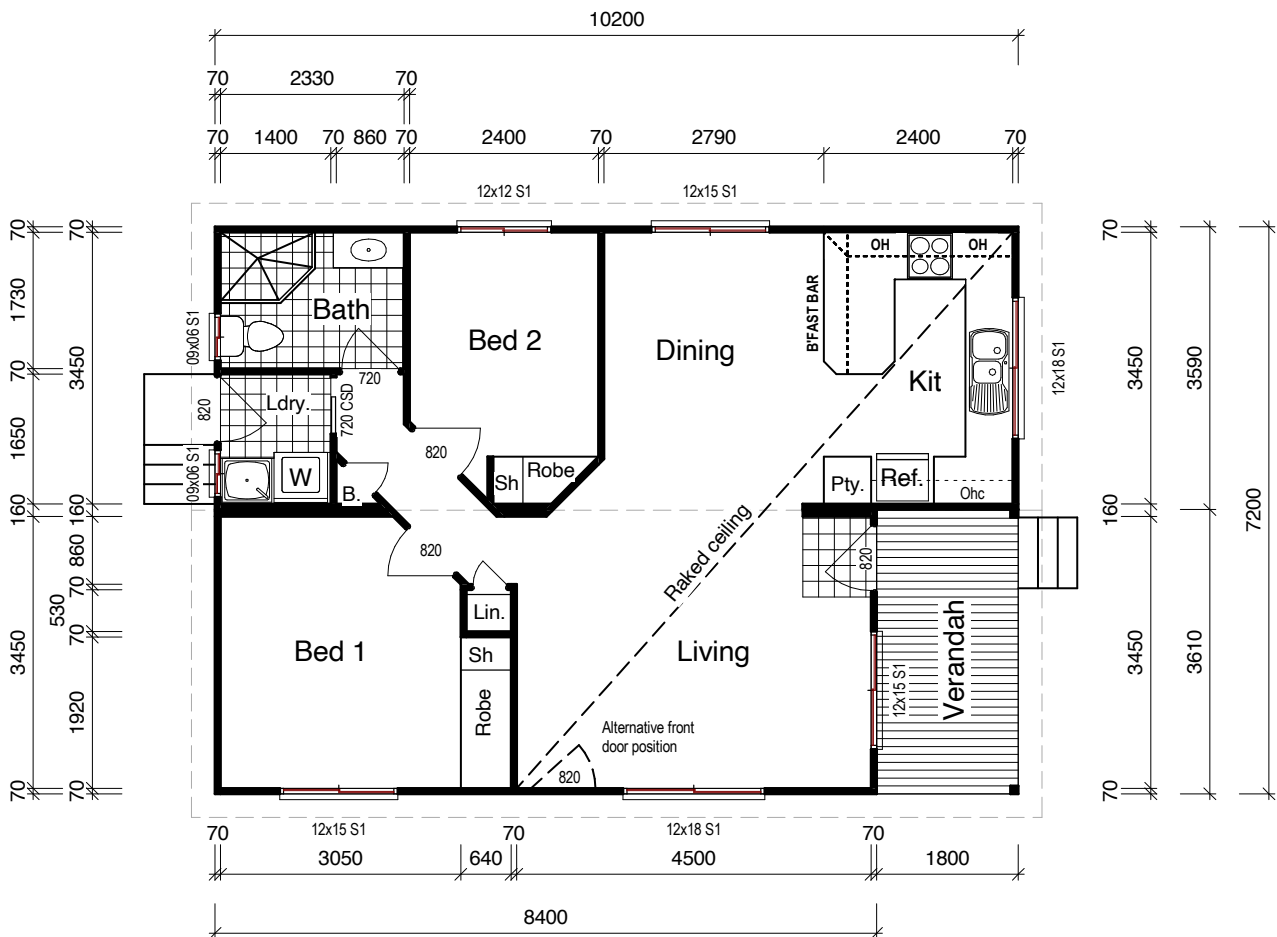
Main Floor: **66.94m²**
 Verandahs: **6.50m²**
Total: 73.44m²
 Width: **7.2m**

Wiltshire is a versatile two-bedroom premium modular home with style... and a range of possibilities!

The style starts with a dramatic raked ceiling running across the open plan living/dining area to the well-appointed kitchen with a pantry, double sink, breakfast bar and overhead cupboards. Above the kitchen sink is a window looking straight out the front, the ideal situation for doing the dishes!

An angled hallway leads to the spacious bedrooms, bathroom and laundry with a rear external door. A convenient linen closet and broom cupboard as well as built-in robes and shelving in the bedrooms, compliment this feature-packed design!

Offering so much potential, the Wiltshire also offers an alternative front door position... an opportunity to welcome the visitor to every area of the living at once!





Façade Shown Cube



Kent I

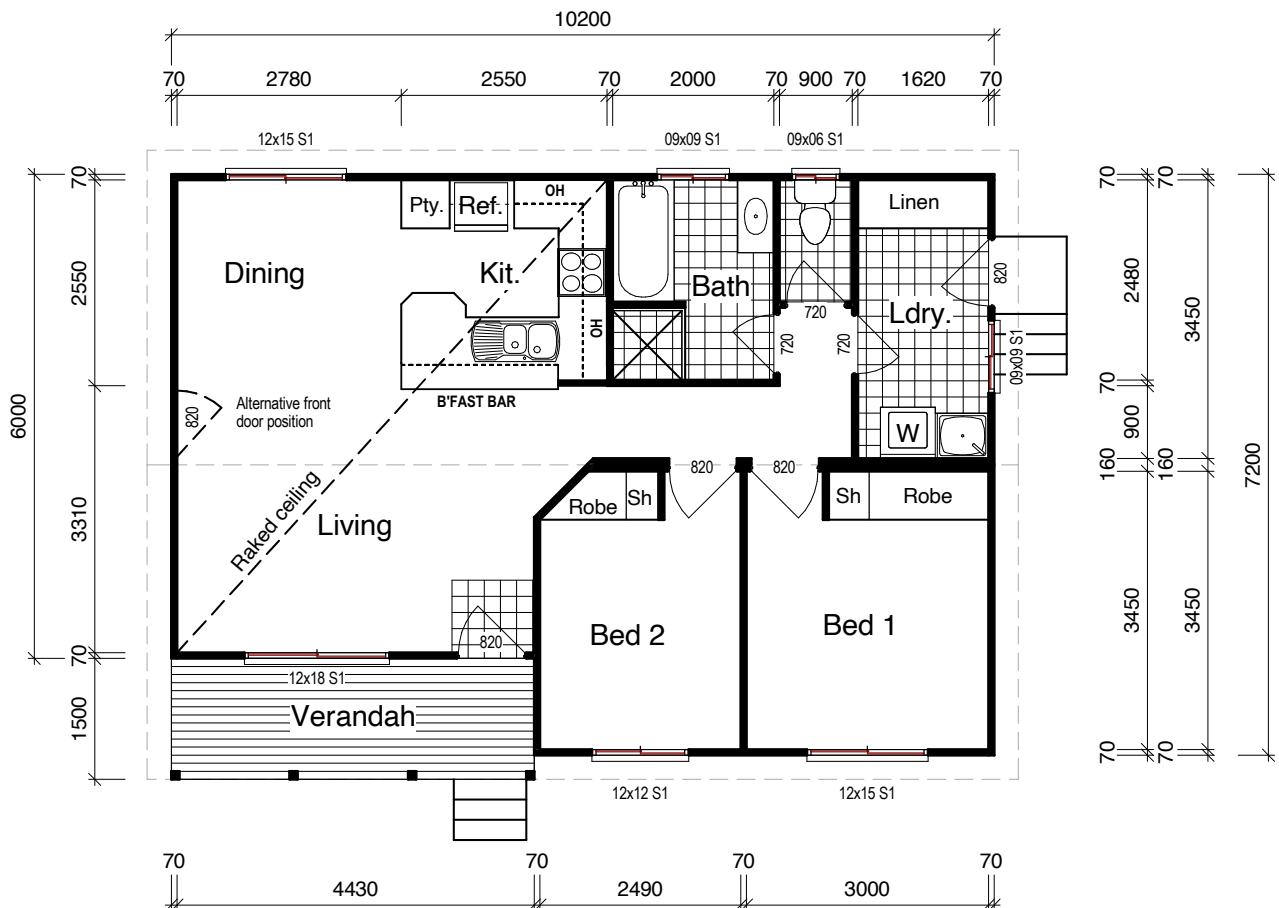
Main Floor: **68.04m²**
 Verandahs: **6.75m²**
Total: 74.79m²
 Width: **7.2m**

With plenty of space and options of places... you won't ever get bored of the same old room every day and every night!

You can head for the living, or cook in the kitchen, or eat at the bench bar, or eat at the table, maybe you might sleep in bedroom one, then swap and experiment with bedroom two... or you could dance in the laundry, or sing in the bath.

And on the practical side of life, you have nothing to fear with the Kent I design... with a spacious linen cupboard, built in robes and shelves to the bedrooms, a beauty of a pantry in the kitchen and handy overheads, this design is really a winning solution!

You can also change things around with a separate front entrance to the verandah!





Façade Shown Cube and Coastal combined



Hereford

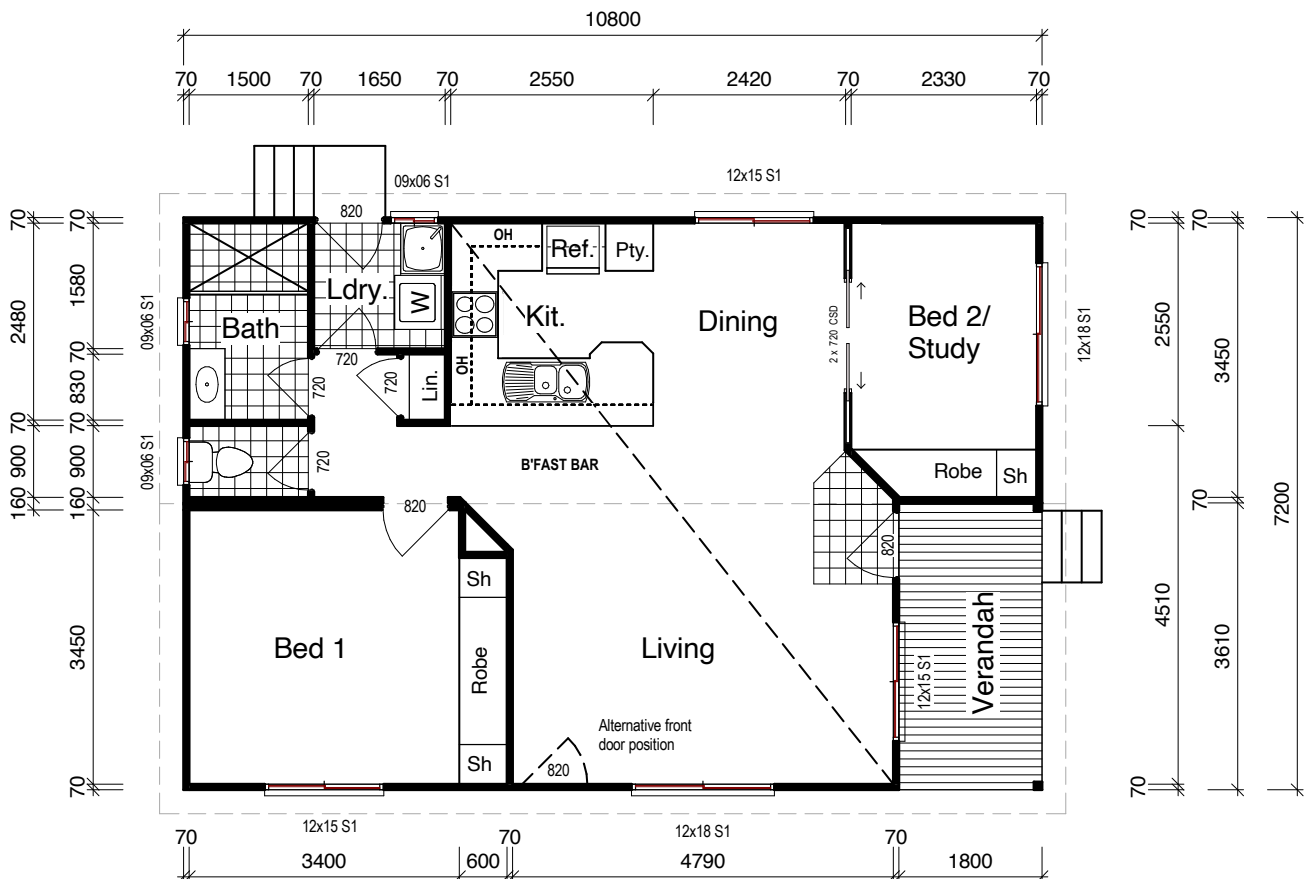
Main Floor: **71.26m²**
 Verandah: **6.50m²**
Total: 77.76m²
 Width: **7.2m**

The Hereford design home presents a full measure of style! Enter straight into an open living area, with cathedral ceilings overhead and windows to the left and right! The kitchen features an all time favourite... the breakfast bar and there's space enough for dancing!

Down the hallway is a master bedroom, bathroom with a separate toilet room beside, laundry including convenient external access, and a practically placed linen cupboard.

The second bedroom is placed at the front of the home, behind double cavity sliders – with the ability to turn it into a study or what ever you would like to use a bonus well placed room for! This exciting space features a built-in cupboard... yet another bonus!

With a window connecting the living and the verandah, the design of the Hereford home flows together beautifully, and nothing is ever too far away!





Façade Shown Cube and Skyline combined



Dorset

Main Floor: **76.66m²**
 Verandahs: **5.42m²**
Total: 82.08m²
 Width: **7.2m**

The Dorset design home is a versatile premium modular home with configuration alternatives ready for you to personalise!

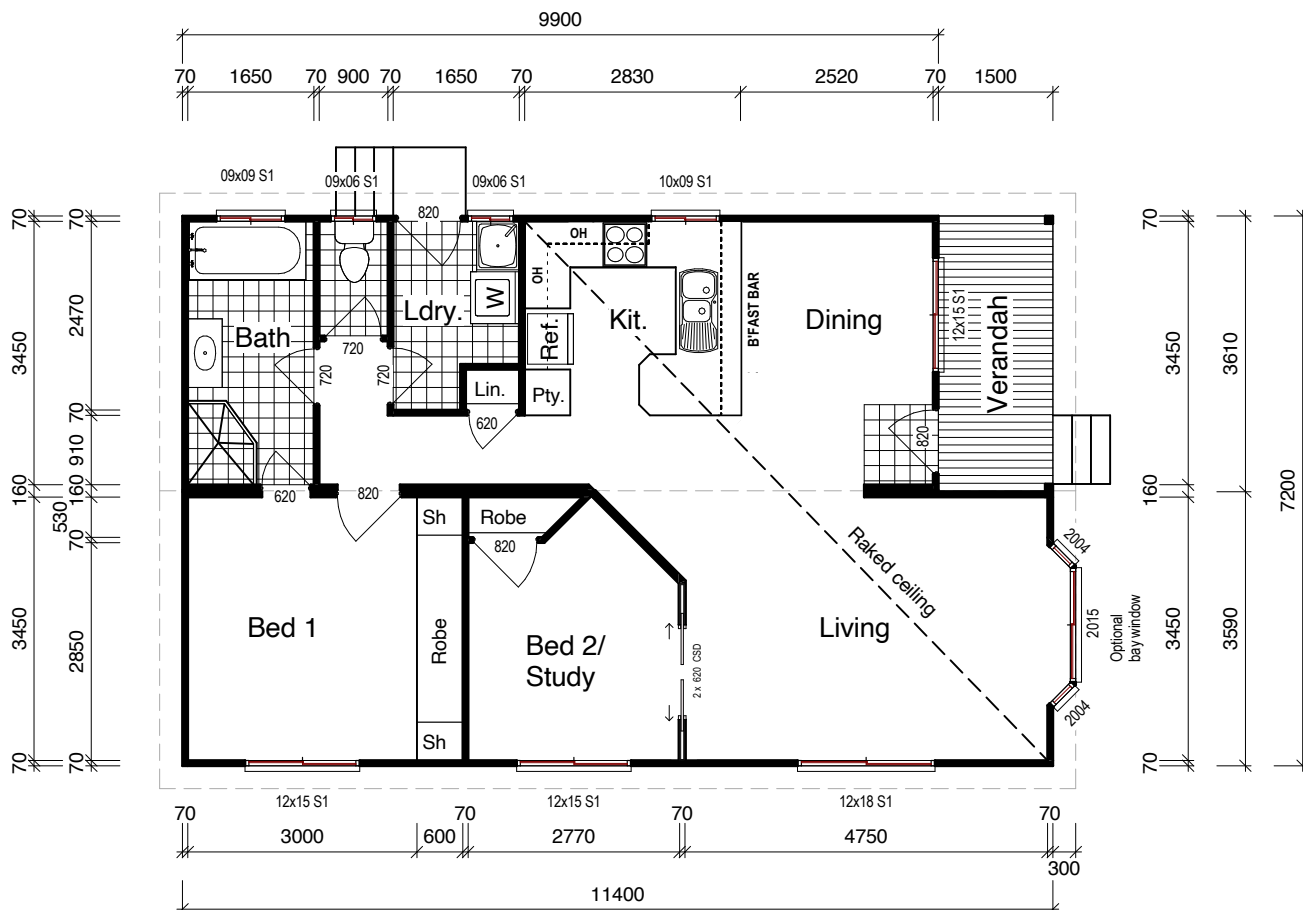
The second bedroom offers alternative solutions for every lifestyle and need, flowing beautifully into the living area, with double cavity sliders connecting the 'zones'.

A fully equipped kitchen with a pantry, double sink, overhead cupboards and a breakfast bar adjoins the spacious living and dining area under a stylish raked ceiling.

An optional bay window shown on the design can add extra style, and is well known for the light and air it brings to the living space.

The main bathroom gives the luxury of turning into an ensuite when you wish, with a convenient second entrance from the master bedroom. The toilet sits in its very own room, and the laundry gives an external access alternative...

There is plenty of storage in the Dorset, with built in robes and a linen cupboard, making this design ideal for making yourself at home.





Façade Shown Skyline



Surrey

Main Floor: **76.67m²**
 Verandahs: **5.41m²**
Total: 82.08m²
 Width: **7.2m**

The Surrey is a luxurious design.

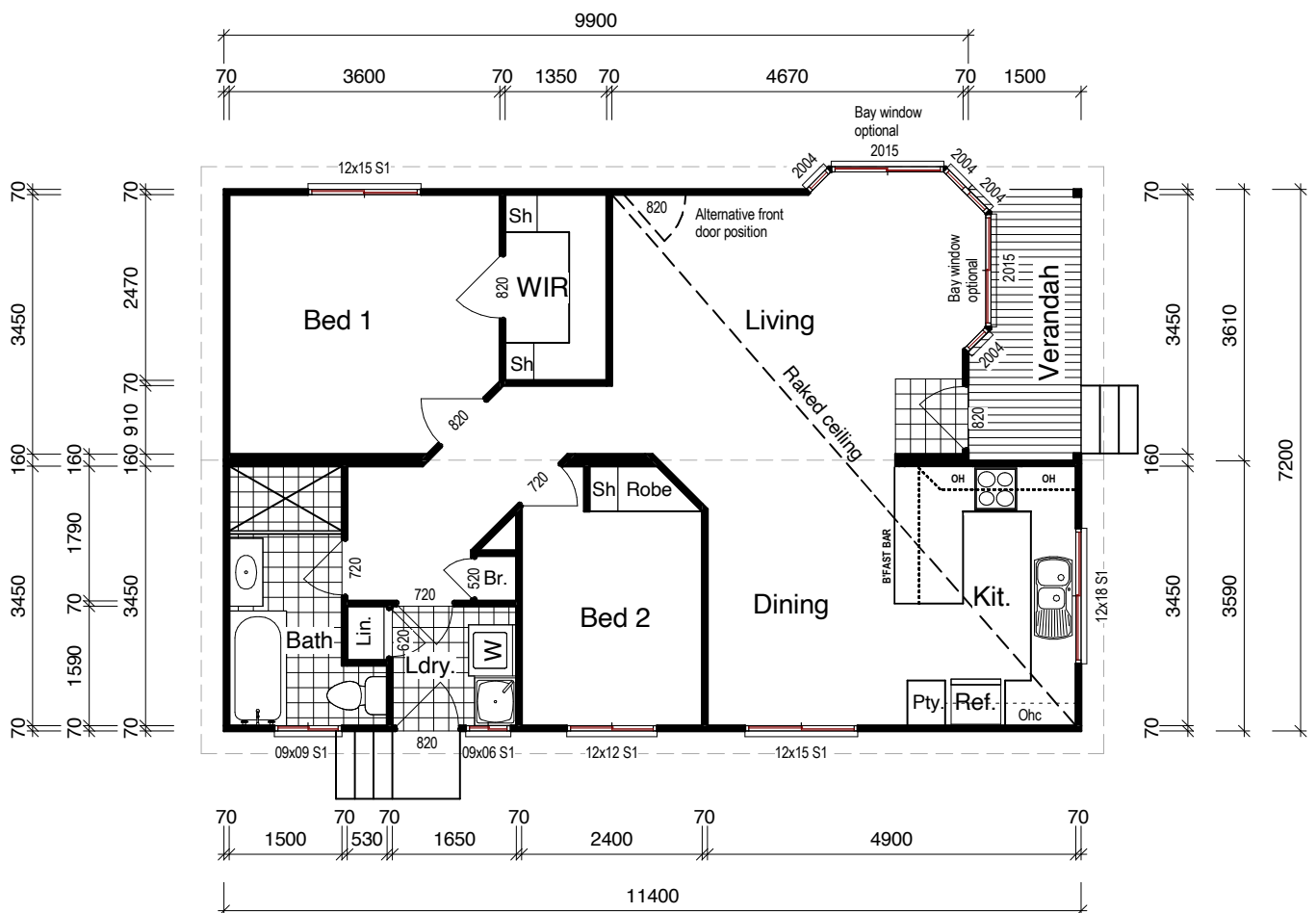
Walk straight into the living area with a cathedral ceiling overhead. Behind a small wall to the left is the eat zone... with dining and kitchen areas flowing together with a breakfast bar, this is truly a popular design.

Down the hallway we have a spacious master bedroom with a walk-in-robe.

The bathroom sits at the end of the wide and spacious hallway and encompasses a bath, large rectangle shower, a toilet and a vanity.

Convenient storage is positioned near the laundry for linen and brooms and bedroom 2 also features a built in robe.

Plenty of potential happiness available with the Surrey!





Façade Shown Coastal



Suffolk I

Main Floor: **81.27m²**
 Verandahs: **5.41m²**
Total: 86.68m²
 Width: **7.2m**

The Suffolk I is a premier design.

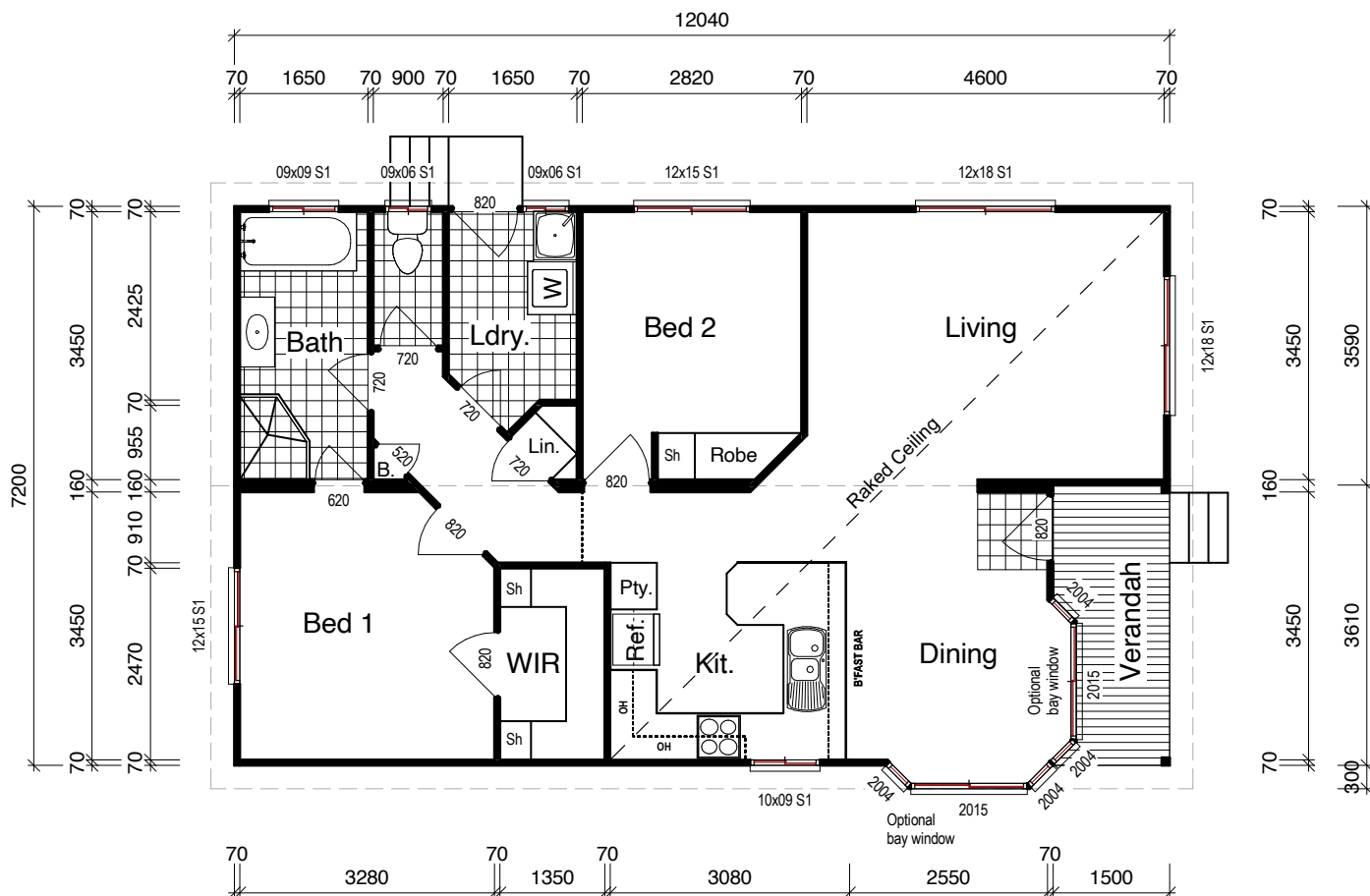
Be welcomed straight into the heart of the home from the front verandah. With a raked ceiling extending over the entire living, dining and kitchen area, you will have an immense sense of space in this two bedroom home.

The master bedroom features a generous walk-in robe and also has a second access to the main bathroom, a great solution!

The hallway is packed with functionality, featuring a broom cupboard and a linen cupboard, and there is plenty of space to work in in the laundry!

Included features are a breakfast bar in the kitchen and a built-in robe in the second bedroom.

The ideally located dining area also offers the option for bay windows, providing a light and airy location to eat any meal!





Façade Shown Cube



Suffolk 2

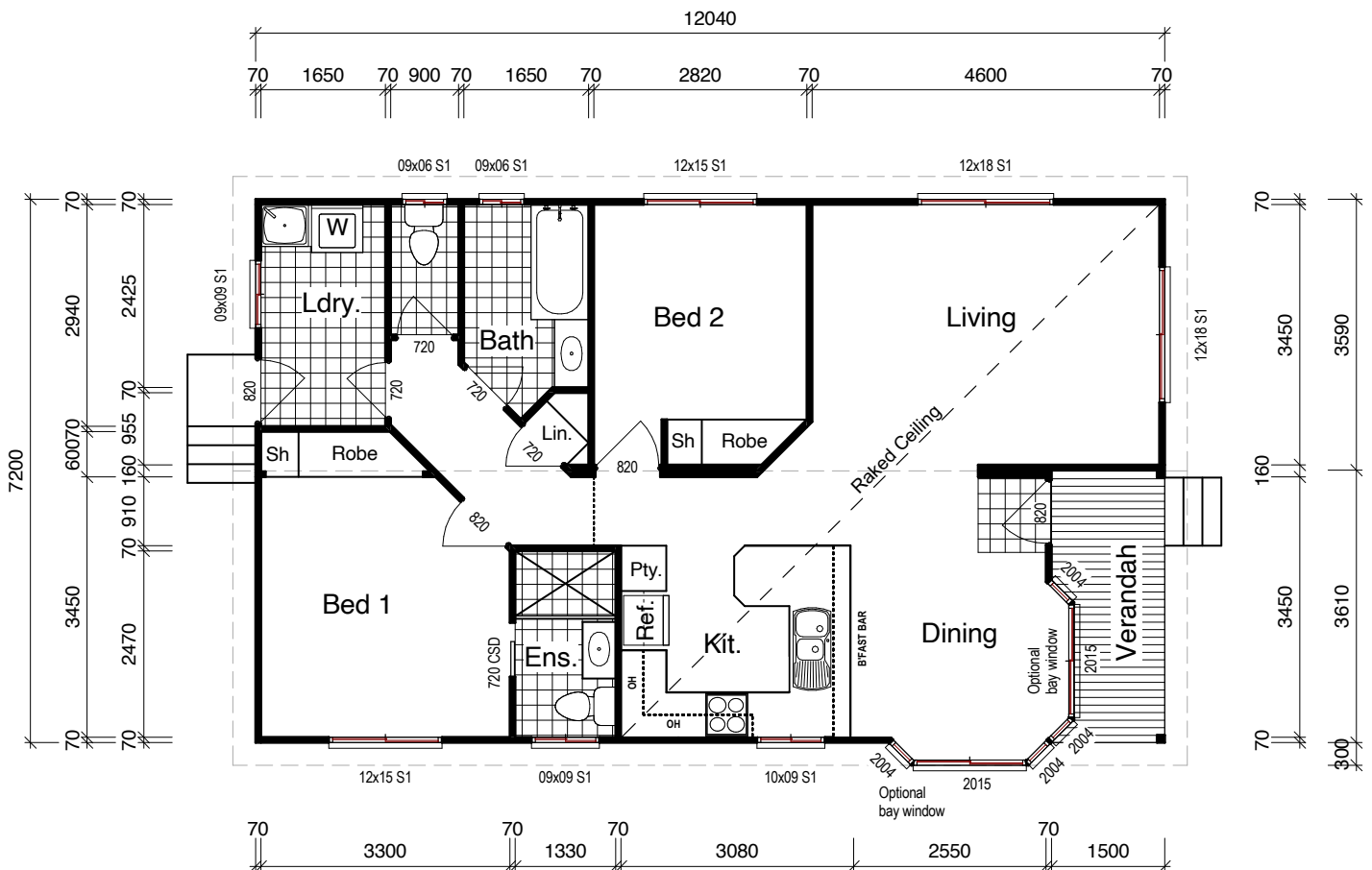
Main Floor: **81.27m²**
 Verandahs: **5.41m²**
Total: 86.68m²
 Width: **7.2m**

The second edition of the Suffolk adds more luxury to this already luxurious design! Continuing the features of a raked ceiling across the living, kitchen and dining the Suffolk II is still keeping the beautiful features known to the Suffolk I.

Now adding the luxury of a separate ensuite to the master bedroom, encompassing a large rectangle shower, vanity and toilet.

The laundry is now positioned at the rear of the home... bringing the opportunity for peaceful breezes to flow through the home end to end. There is plenty of space in the laundry, and the external door makes this room the ideal mudroom.

The Suffolk II also boasts plenty of storage space, with built in robes to both bedrooms, as well as a hallway linen cupboard and overhead cupboards in the kitchen. There's lots to love with the Suffolk II!





Preston

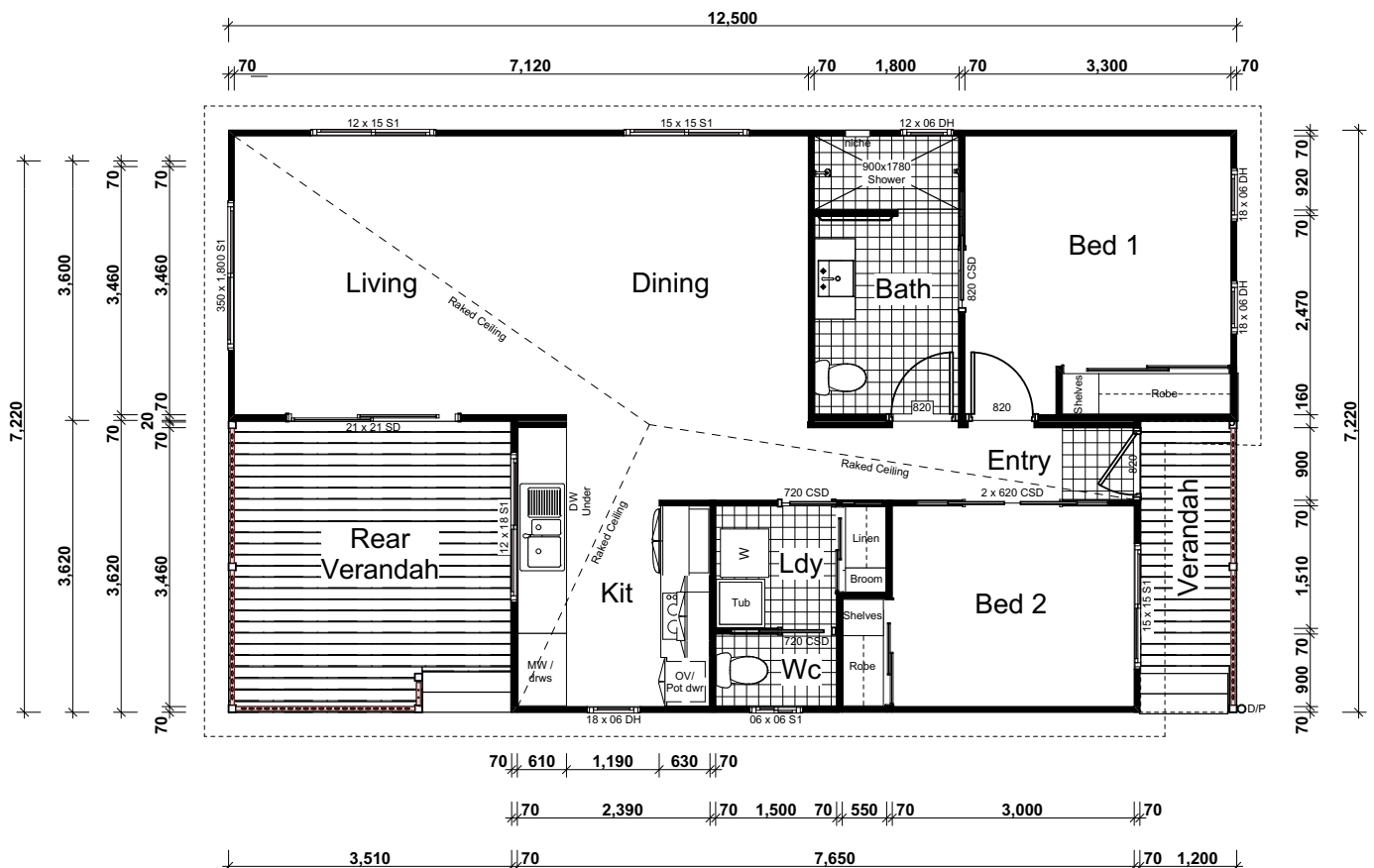
Main Floor: **73.20m²**
 Verandahs: **17.05m²**
Total: 90.25m²
 Width: **7.2m**

Our Preston design home is a popular model for obvious reasons! The impressively designed Preston features cathedral ceilings from the front door to the back, that imbue it with a fantastic sense of space and openness.

The galley style full kitchen offers practical functionality and as the main verandah is incorporated in the flow of the design it presents an ideal transition between indoors and out - it really is the perfect place for entertaining!

The Preston offers 2 toilets for additional convenience and features a spacious main bathroom replete with quality fixtures and fittings. A second toilet is always noted as a bonus, and the double cavity sliders on the entrance to bedroom 2 give an incredible feel of space.

There is plenty of storage throughout the Preston, and the sense of space in every room satisfies everyone who might walk through, an ideal design to say the least!





Façade Shown Timeless with a higher 25 degree roof pitch



Essex

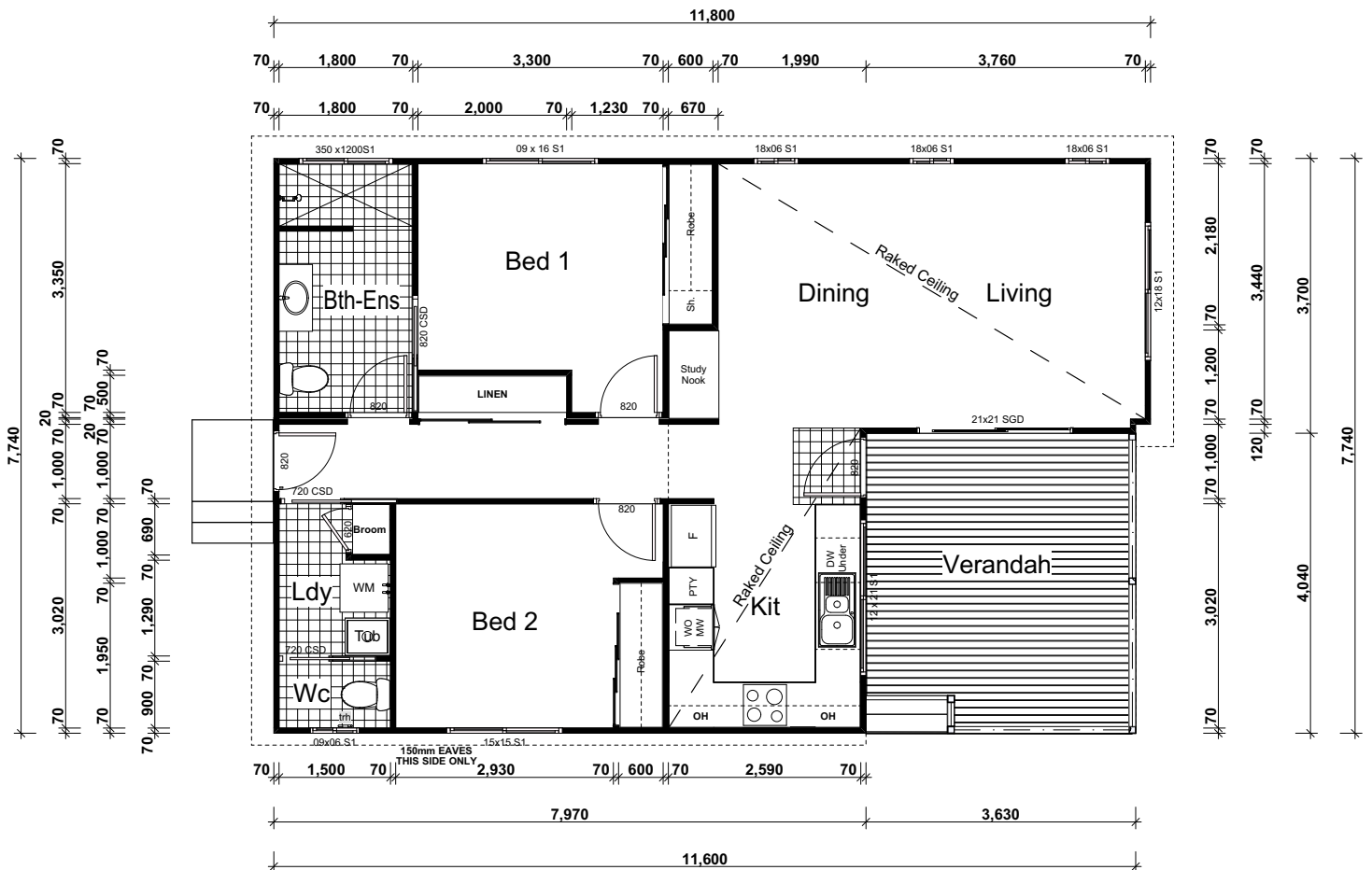
Main Floor: **75.79m²**
 Verandahs: **14.64m²**
Total: 90.43m²
 Width: **7.74m**

The Essex is a true delight for everyday Australian living. The large open plan design invites you to enjoy entertaining in style.

The modern and spacious kitchen offers a wealth of utility and the combined dining and living spaces blend happily with the large and spacious incorporated verandah, creating a massive living space area that invites the outside in.

The Essex features a massive hallway linen cupboard for extra storage and offers an incorporated study nook in the living space...but maybe, that little nook is just in the right space for a bar... another option to consider!

The bathroom ensuite combination is a great space saver, incorporating a much-loved walk-in shower, and the close location of utilities to the back door is ideal. With a bonus second toilet, and convenience at the front, the Essex design home does not disappoint!





Façade Shown Cube



Devon I

Main Floor: **77.72m²**
 Verandahs: **13.0m²**
Total: 90.72m²
 Width: **7.2m**

The Devon I is a choice 2 bedroom modular home with an extraordinary feature – verandahs for relaxing out the front and back!

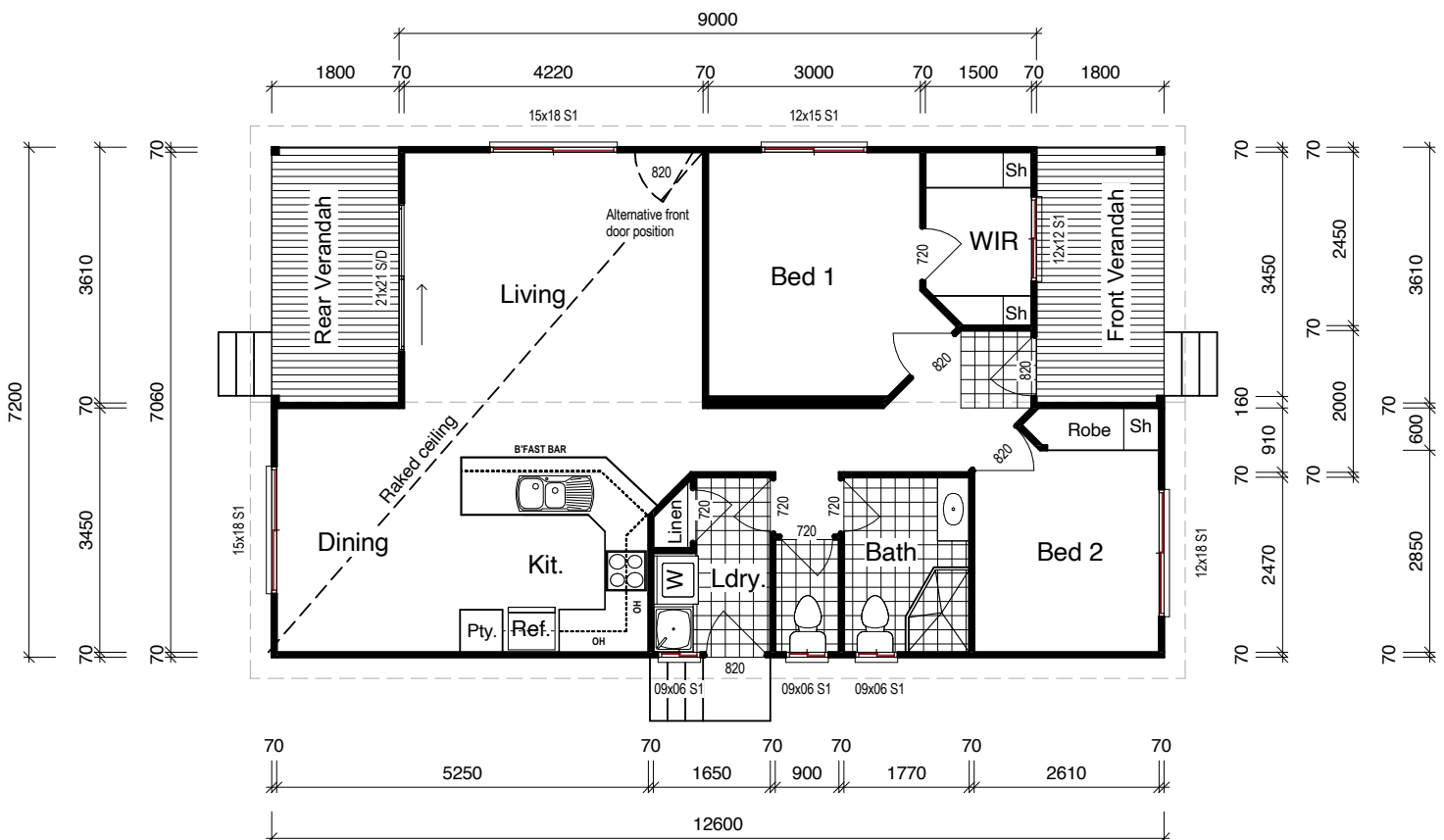
The front verandah takes you straight to a welcoming entry hallway, enticing you all the way through the home... to the back verandah!

A dramatic raked ceiling extends from the living and dining area to the well-appointed kitchen, which has a one and three quarter

sink and benchspace extending to a breakfast bar, which helps tremendously with a luxurious feel of space!

The master bedroom includes a luxuriously large walk-in-robe and the second bedroom has a convenient built in robe with shelving.

There are two toilets in this prestigious design with a toilet in both the bathroom and another separately in its own room!





Façade Shown Traditional



Clovelly

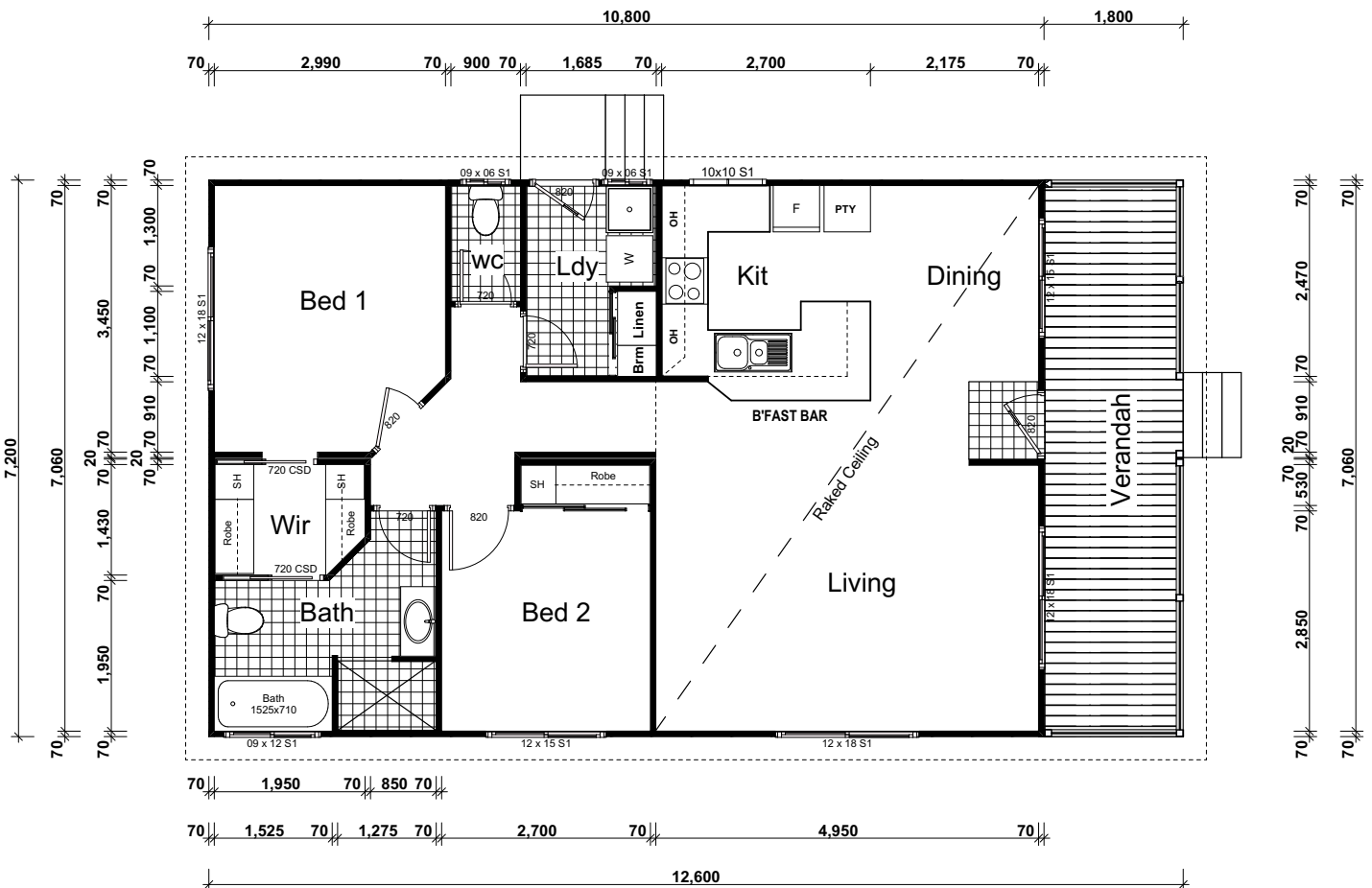
Main Floor: **77.76m²**
 Verandah: **12.96m²**
Total: 90.72m²
 Width: **7.2m**

Clovelly is ideal for those who are looking for a space-efficient two-bedroom premium modular home with a walk-in wardrobe and ensuite, but don't need an entire second bathroom. This clever design features a master bedroom with a walk-in robe that leads to a large two-way bathroom. Problem solved!

There's a spacious open-plan living and dining area that opens onto a full-width verandah, and a well-appointed kitchen with a pantry,

double sink and wrap-around breakfast bar... the perfect transition into the dining area.

The full-size laundry with a side entry door, a separate toilet and a linen closet add a touch of convenience to this luxurious home... and the hallway feels so spacious, only adding to the luxury! The Clovelly covers all bases in a luxurious way, and has been a very popular design amongst our Asset team and clients!





Façade Shown Coastal



Norfolk

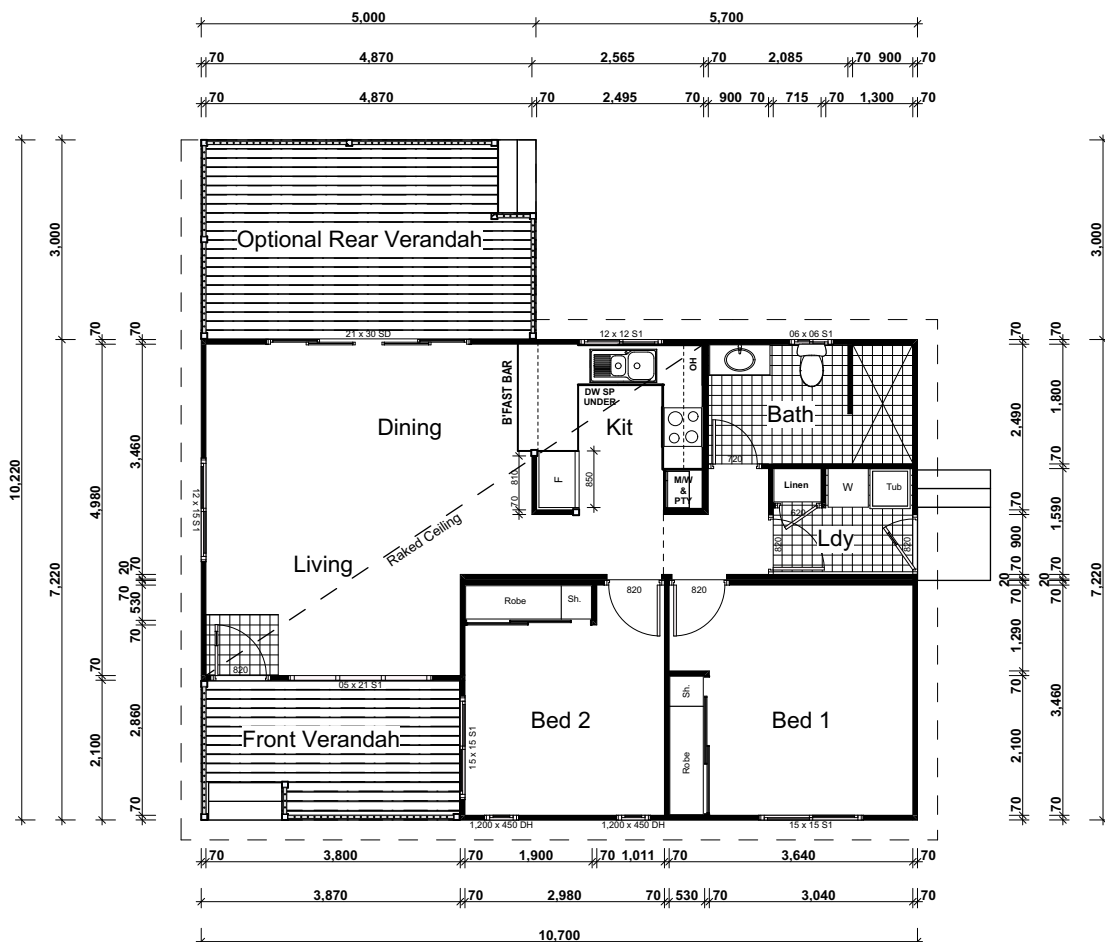
Main Floor: **69.13m²**
 Verandah: **8.13m²**
 Opt Verandah: **15.00m²**
Total: 92.26m²
 Width: **7.2m**

Our Norfolk design features one verandah as standard with an option for a second. Double sliding glass doors open to the second verandah creating an immediate feel of space and seamless flow.

It is a compact 2 bedroom design, but it still feels and presents as a spacious layout packed with modern functionality and design charm... just look at the incorporated breakfast bar and the feature wall around the fridge.

The main bathroom is spacious and accommodates a spacious walk-in shower, a toilet and vanity. Both bedrooms feature built in robes and shelves for extra convenience and practicality. The laundry is conveniently placed and accommodates linen storage as well as an external access door.

The Norfolk might not be the biggest design, but it is most definitely not small in heart!





Façade Shown Timeless



Sussex I

Main Floor: **89.08m²**
 Verandahs: **5.96m²**
Total: 95.04m²
 Width: **7.2m**

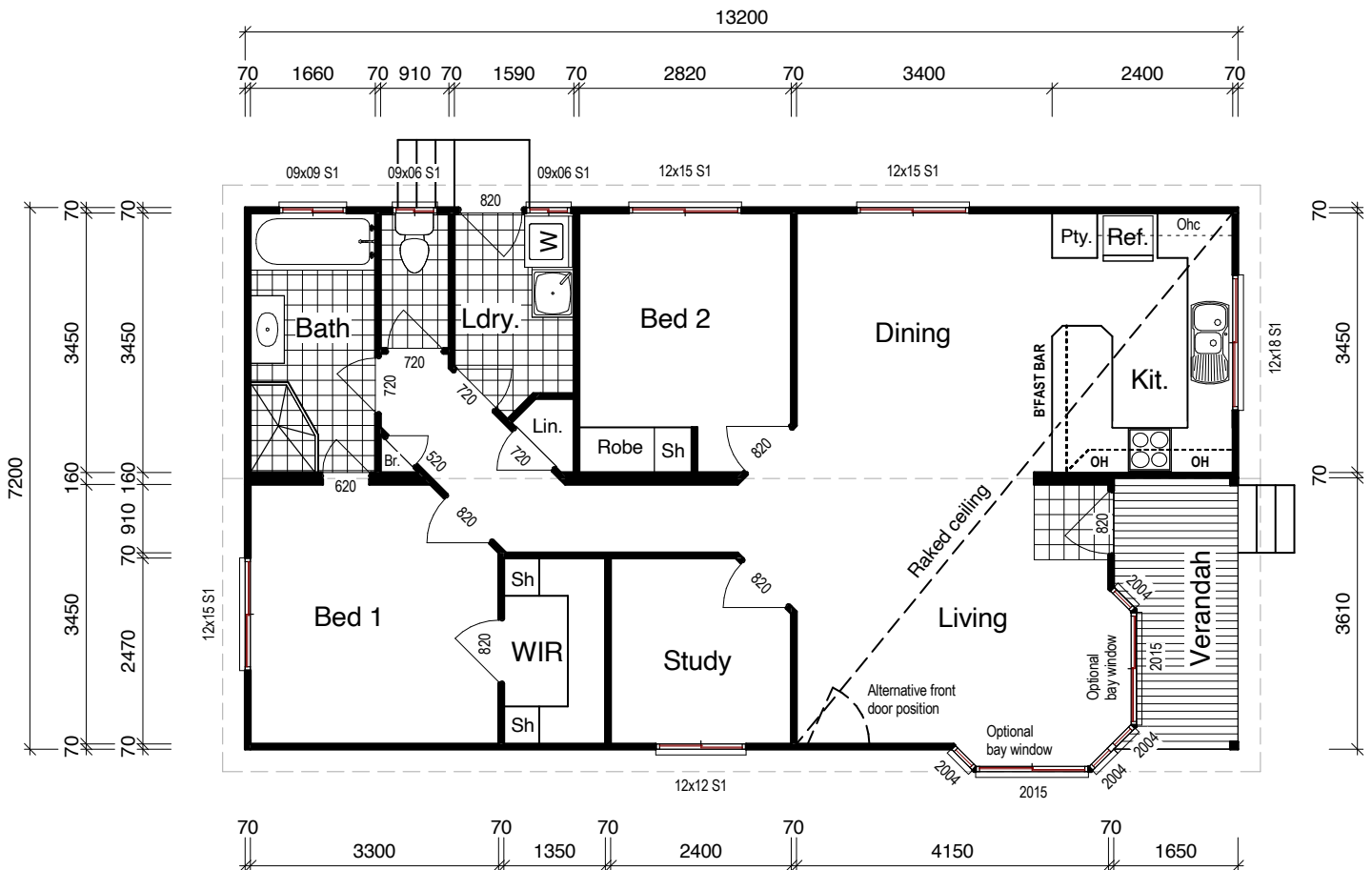
Be welcomed straight into the heart of the home.

The Sussex I is an ideal design, with open and spacious living areas flowing beautifully to the home office and second bedroom.

Further down the hallway, you will be overwhelmed with the beautiful master bedroom which boasts a luxurious

walk-in-robe and a second access to the large bathroom. The toilet sits in its own room... and the laundry accommodates an external side entry.

And the hallway is an example for us all... when you add the broom cupboard and linen cupboard into the equation... there isn't any unnecessary waste of space!





Façade Shown Classic



Sussex 2

Main Floor: **89.08m²**
 Verandahs: **5.96m²**
Total: 95.04m²
 Width: **7.2m**

And here we have it... the Sussex III!

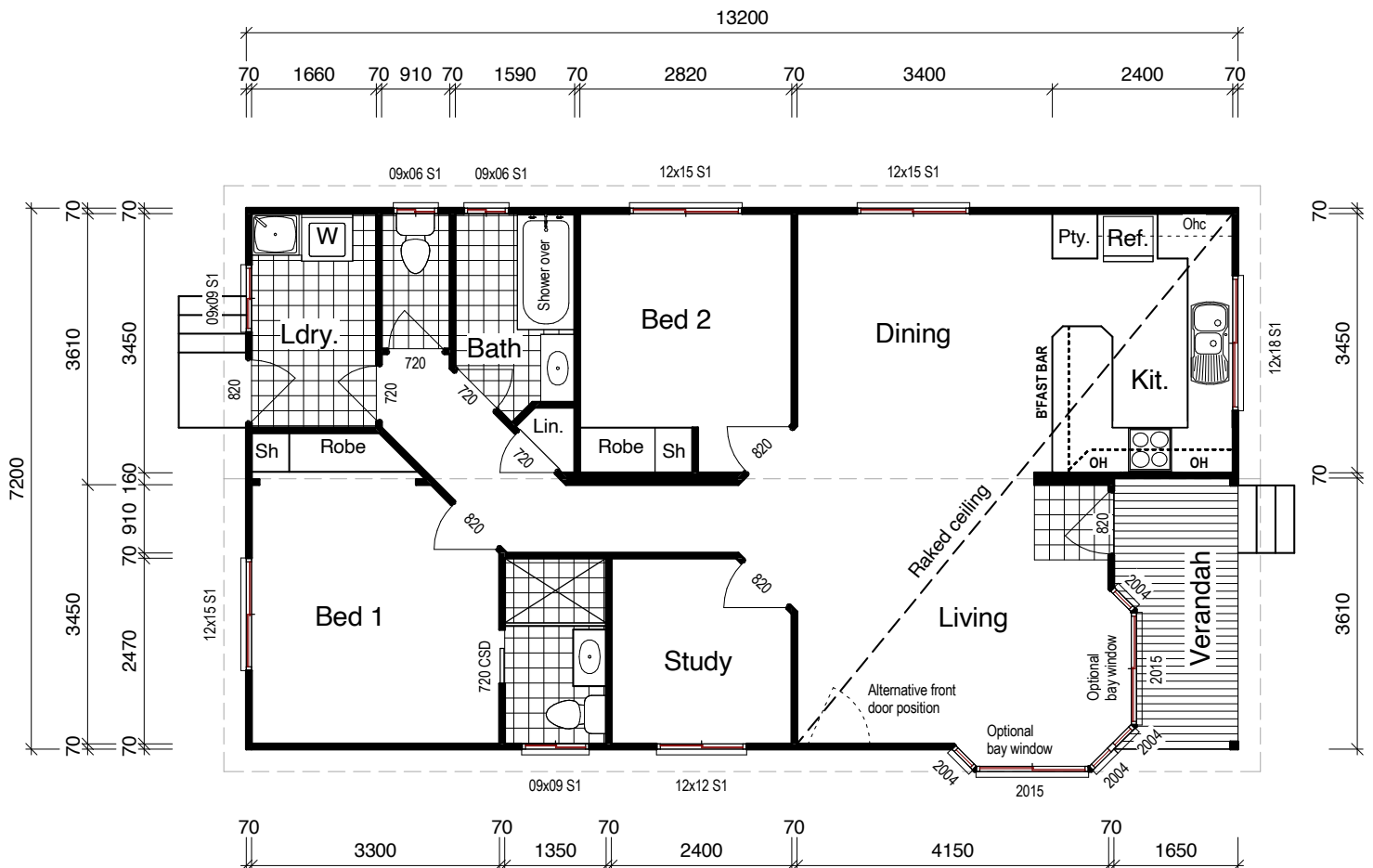
Keeping the large and welcoming feel to the living space of its predecessor the Sussex I... this design now gives another option!

NOW FEATURING

An amazing ensuite to the master bedroom... a huge rectangular shower and a second toilet and vanity!

We've also swapped the laundry and bathroom position... so you can now enjoy a breeze flowing straight through the house!

And... you will love the breakfast bar, looking straight out the kitchen window, the Sussex II really is a space for a happy place!





Façade Shown Coastal



Yorkshire I

Main Floor: **87.63m²**
 Verandahs: **11.74m²**
Total: 99.37m²
 Width: **7.2m**

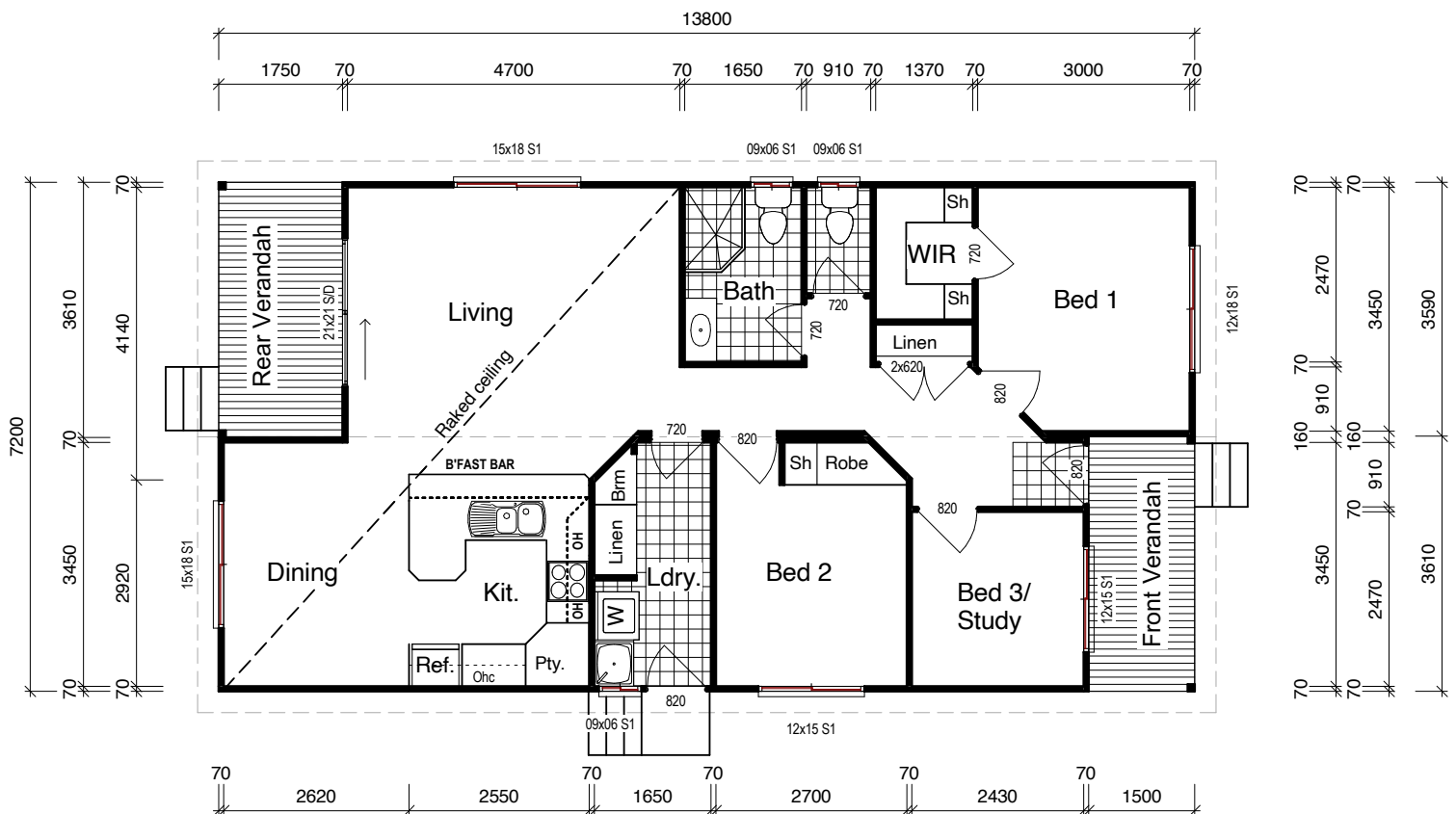
The Yorkshire I is a luxurious design!

Presenting 3 beautiful rooms as you enter the door to a wide entrance... and leading you straight down the hallway to a spacious living, dining and kitchen featuring cathedral ceilings... this design calls itself home.

The sliding doors to the verandah invite you straight out the back to sit down and relax.

As part of the master bedroom at the front of the home, there is an enviable walk-in-robe, a luxury loved by all!

The Yorkshire I design features an abundance of storage space throughout the home, with a double doored linen press in the hallway and further storage space in the laundry beside a broom cupboard, as well as a built in wardrobe in the second bedroom and overheads in the kitchen... that's a lot of built in space! There's plenty of room to love in this design!





Façade Shown Timeless



Kent 2

Main Floor: **92.25m²**
 Verandahs: **10.26m²**
Total: 102.51m²
 Width: **8.0m**

Like the previous generation of the Kent family... the Kent II solves more solutions than you can count on your fingers and toes.

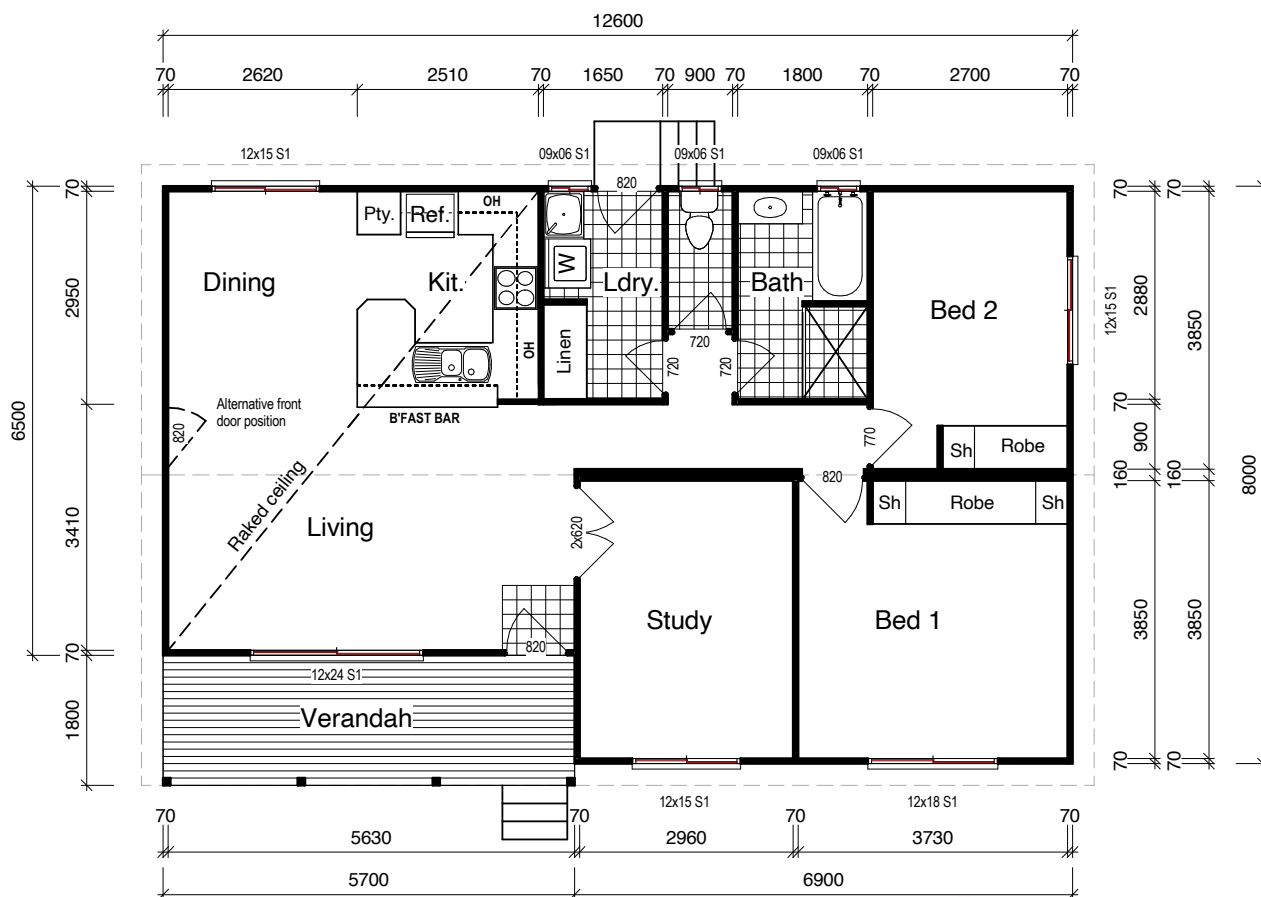
Now announcing the arrival of... the Study - versatile to no end, this room could be your media room, or sewing room, or toy room, or third bedroom, maybe even an internal man cave?... or an extension to the living room? ... Whatever You Like!

Here you have it, a bonus room of over 11 square meters and so useful!

Also note the convenient layout change to include a laundry just a tad closer to the kitchen.

With plenty of storage space including kitchen overhead cupboards, a large linen cupboard and built in robes to both bedrooms, and cathedral ceilings to the living areas... this design certainly is luxurious!

And if you would prefer to have your front entrance separate to your verandah, that is absolutely an option... check out a suggested location on the below plan!





Façade Shown Skyline



Somerset

Main Floor: **82.80m²**
 Opt Verandah: **20.70m²**
Total: 103.50m²
 Width: **7.2m**

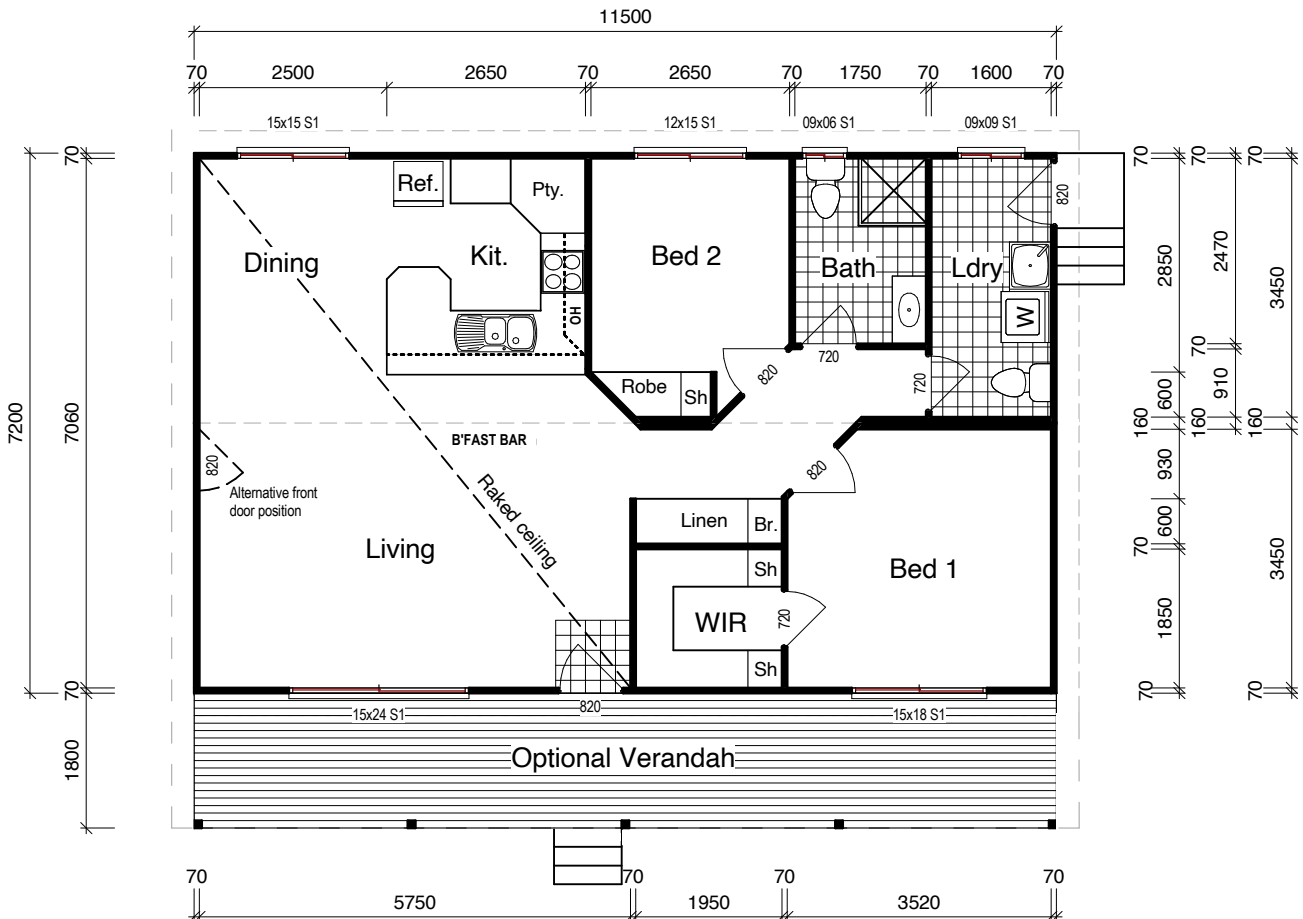
A beautifully modern Somerset design modular home offers year-round lifestyle!

With a large open plan living, dining and kitchen area, featuring a stylish dropdown breakfast bar, the competition is high against the dramatic raked ceiling.

Further down the hallway, the master bedroom features a generously sized walk-in-robe, and bedroom two presents a built in wardrobe.

There is plenty of storage space in the Somerset, courtesy of a large hallway linen closet and broom cupboard... and there is plenty of space in the laundry and the bathroom, another sign of luxury.

Across the front, the optional verandah can provide a desirable additional undercover outdoor area... perfect for soaking in the sun, and relaxing with a drink.





Façade Shown Cube and Skyline combined



Devon 2

Main Floor: **84.22m²**
 Verandahs: **6.50m²**
 Opt Verandah: **12.96m²**
Total: 103.68m²
 Width: **7.2m**

WOW - Check out this design for an epic upgrade from its predecessor!

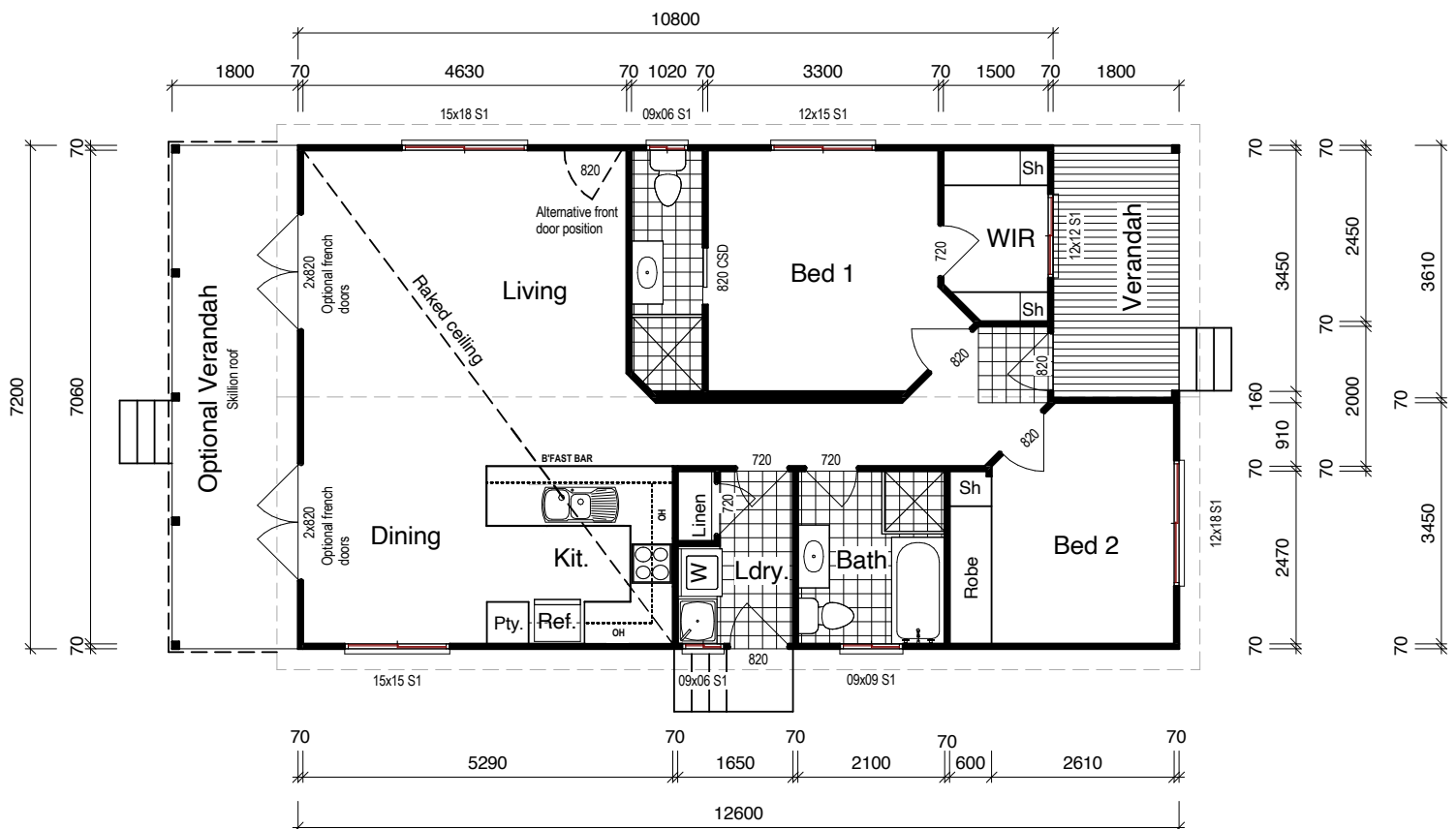
An upgraded master bedroom takes the cake... with a spacious walk-in-robe, plus an ensuite with a shower, vanity and toilet, this spells home-sweet-home.

Moving the second toilet into the master bedroom ensuite has allowed a larger main bathroom, which now accommodates a bath.

The second bedroom has also benefited from the change, with an even larger built in robe - perfect!

The Devon II really gives modern vibes, with a square shape to the kitchen. All under a sweeping cathedral ceiling, that breakfast bar really does seem the ideal breakfast bar to sit at.

The Devon II has plenty of potential with optional French doors opening from the spacious living area, to an optional back verandah filling out the entire width of the home... the perfect addition!





Façade Shown Coastal

3 1

Oxford 1

Main Floor: **91.08m²**
 Verandahs: **12.96m²**
Total: 104.04m²
 Width: **7.2m**

The Oxford 1's beauty is in its simplicity – it is a convenient space, with a touch of luxury – exactly what is needed in a modular home!

The living and dining feel exceptionally spacious, a credit to the well-placed cathedral ceiling, and an amazing bonus room! This versatile space can be used in so many ways, it really is a space to utilize and make your own!

Off the central hallway is a spacious master and second bedroom, a full-sized bathroom, laundry, another toilet, a broom cupboard and a linen closet! Who knew we could fit so much in!?

Both bedrooms have built in wardrobes (wall-to-wall in the master) and the laundry includes... that's right... a side entrance!

Home Sweet Home!





Façade Shown Traditional



Oxford 2

Main Floor: **91.08m²**
 Verandahs: **12.96m²**
Total: 104.04m²
 Width: **7.2m**

The Oxford II is the Oxford I's 'have it all sibling.' With every luxury you would expect in a premium three-bedroom modular home, this design really punches above its weight. Based on the Oxford I design, it has a full-width verandah that opens to a spacious, high ceilinged living room.

Follow the raked ceiling across to the airy dining room and peninsular kitchen, with a dreamy window just above the sink looking out to the verandah and beyond... the great Australian dream!

Adjoining the dining room... behind double pocket doors is the home office... or third bedroom... or media room... or rumpus room... or library... or sewing room... or... there's so many options, but just imagine all that extra space with the doors flung wide open, but having those doors handy to close the space off whenever you need.

The Oxford II's pride and joy lies in the Master Bedroom additions of a walk-in-robe, and an ensuite! The laundry also features a side external entrance... ultimately the ideal home!





Façade Shown Classic with a higher 25 degree roof pitch



Newton

Main Floor: **86.40m²**
 Verandah: **21.60m²**
Total: 108.00m²
 Width: **7.2m**

The Newton design lends itself beautifully to a traditional long front verandah. Enter in from the outside, and you will be greeted with an open plan living, dining and kitchen area.

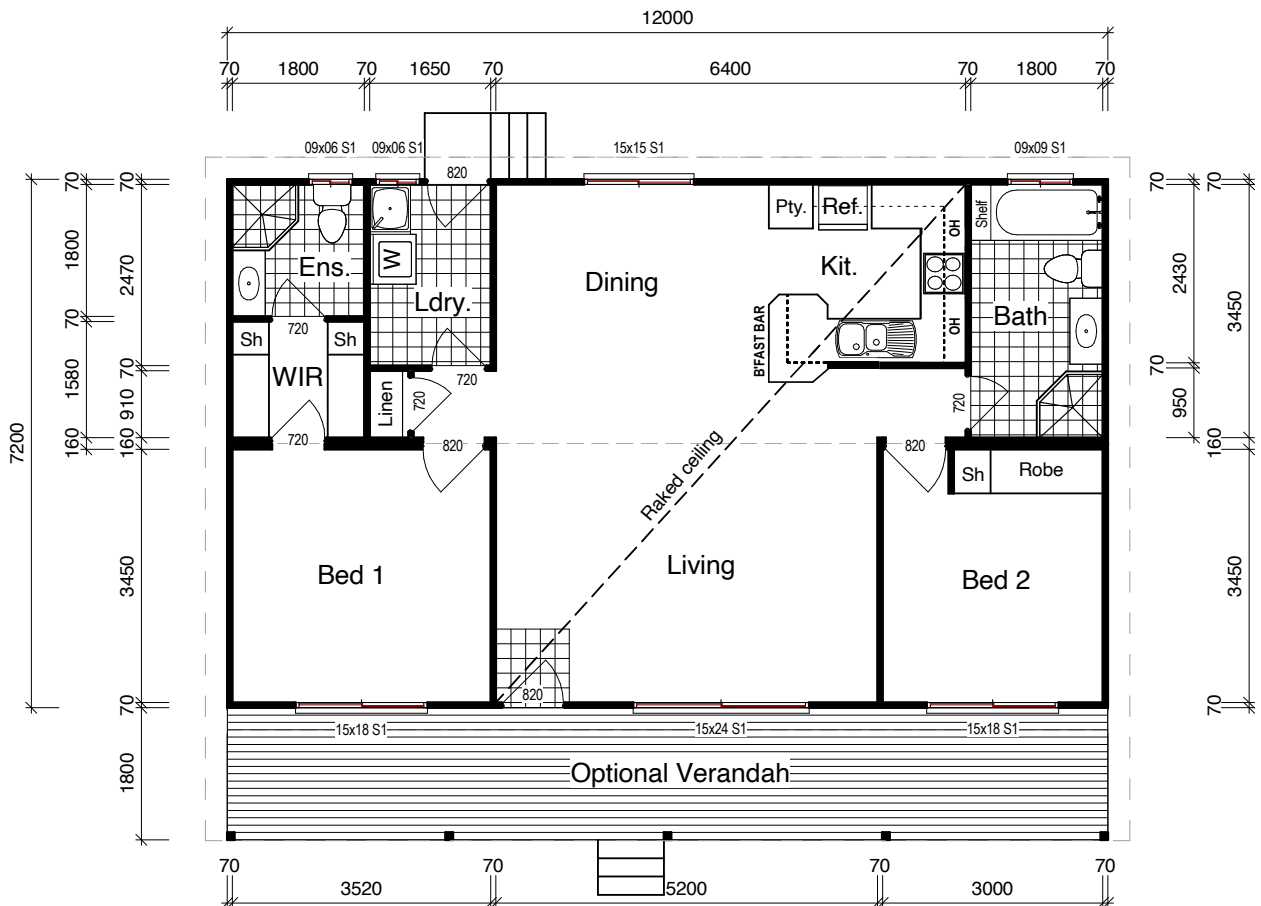
Around to the left is the master suite which features a walk-in-robe and a master only ensuite! The laundry is also to the left, with the linen cupboard conveniently placed separately to allow more room in the laundry.

On the other side of the living space is the second bedroom with a built in robe... and

the main bathroom, presenting a wall to wall bath feature at the end of the bathroom, as well as a shower, toilet and vanity.

The layout of the Newton is perfect for separating the master utilities to the guest or kids section of the home, with the communal areas sitting between the two!

With plenty of overhead storage in the kitchen, and a full height pantry, this home is set to provide for your most valuable family needs... especially when the optional verandah is added to the front!





Façade Shown Cube and Skyline combined

2+

2

Berkshire I

Main Floor: **94.44m²**
 Verandahs: **13.84m²**
Total: 108.28m²
 Width: **8.0m**

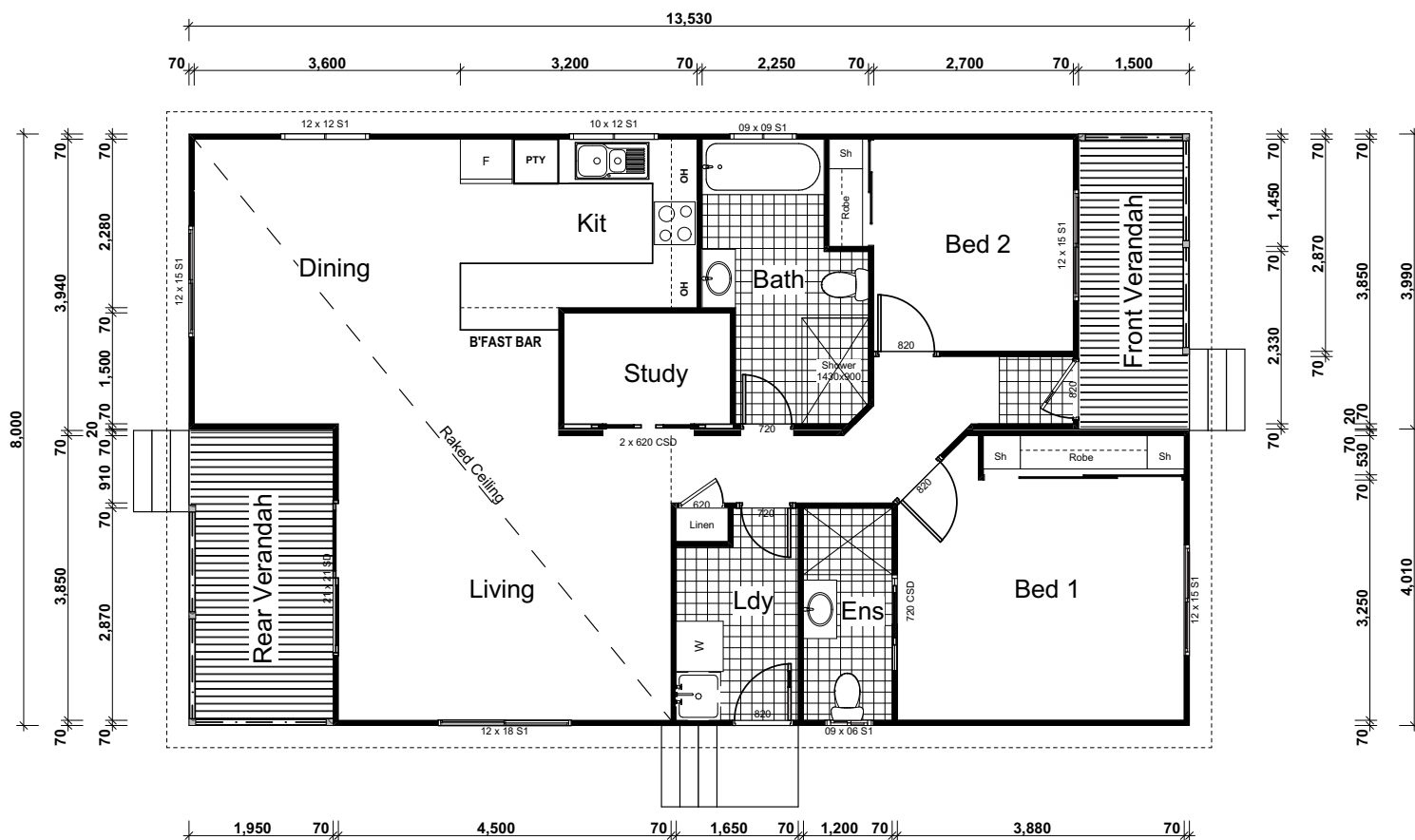
Welcome home to the Berkshire, edition II!

Enter in from the front verandah, then allow yourself to be led into the heart of the home.

Through an angled hallway, you will find yourself in the homely area hosting the spacious kitchen, dining and living under a beautiful cathedral ceiling.

On a second look into the doorways off the hallway, we have a conveniently placed study, a very large bathroom catering for a large shower, bath, vanity and toilet, there's also a handy laundry, and a spacious master suite with its own ensuite and built in wardrobe, as well as, a secondary bedroom with a built in robe.

The Berkshire is our space master -time to invite the family!





Façade Shown Coastal

2+ 2

Berkshire 2

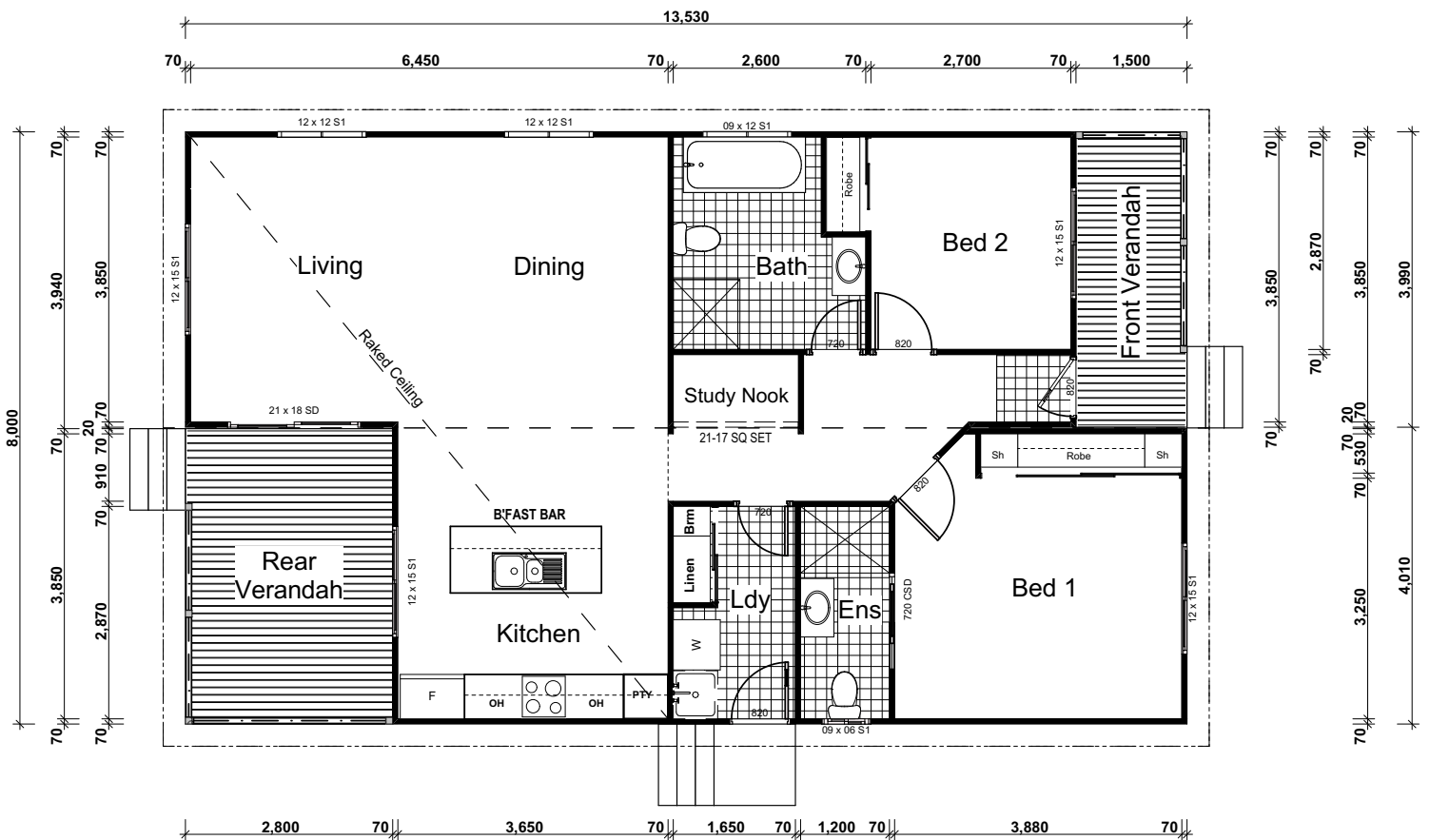
Main Floor: **91.03m²**
 Verandahs: **17.25m²**
Total: 108.28m²
 Width: **8.0m**

The Berkshire II design really is a beauty of a home! Enter into a wide entrance hallway hosting doorways to spacious bedrooms and a very generously sized main bathroom, as well as a laundry and convenient study nook.

At the back of the home, the kitchen presents modern style all around. Under the raked ceiling, sits an entire wall of cabinetry behind an island bench hosting a double bowled sink and a breakfast bar. This kitchen layout really is the ideal setting.

The layout of the kitchen allows for flawless flow to the dining, living and rear verandah, absolutely perfect for everyday living, and entertaining. The convenient proximity of the study nook is a bonus and having an ensuite with a large wall to wall shower in the master bedroom, adds another luxury.

There's plenty of storage in the Berkshire design, with kitchen overheads, a linen and broom cupboard in the laundry and built in robes to the bedrooms.





Façade Shown Timeless



Yorkshire 2

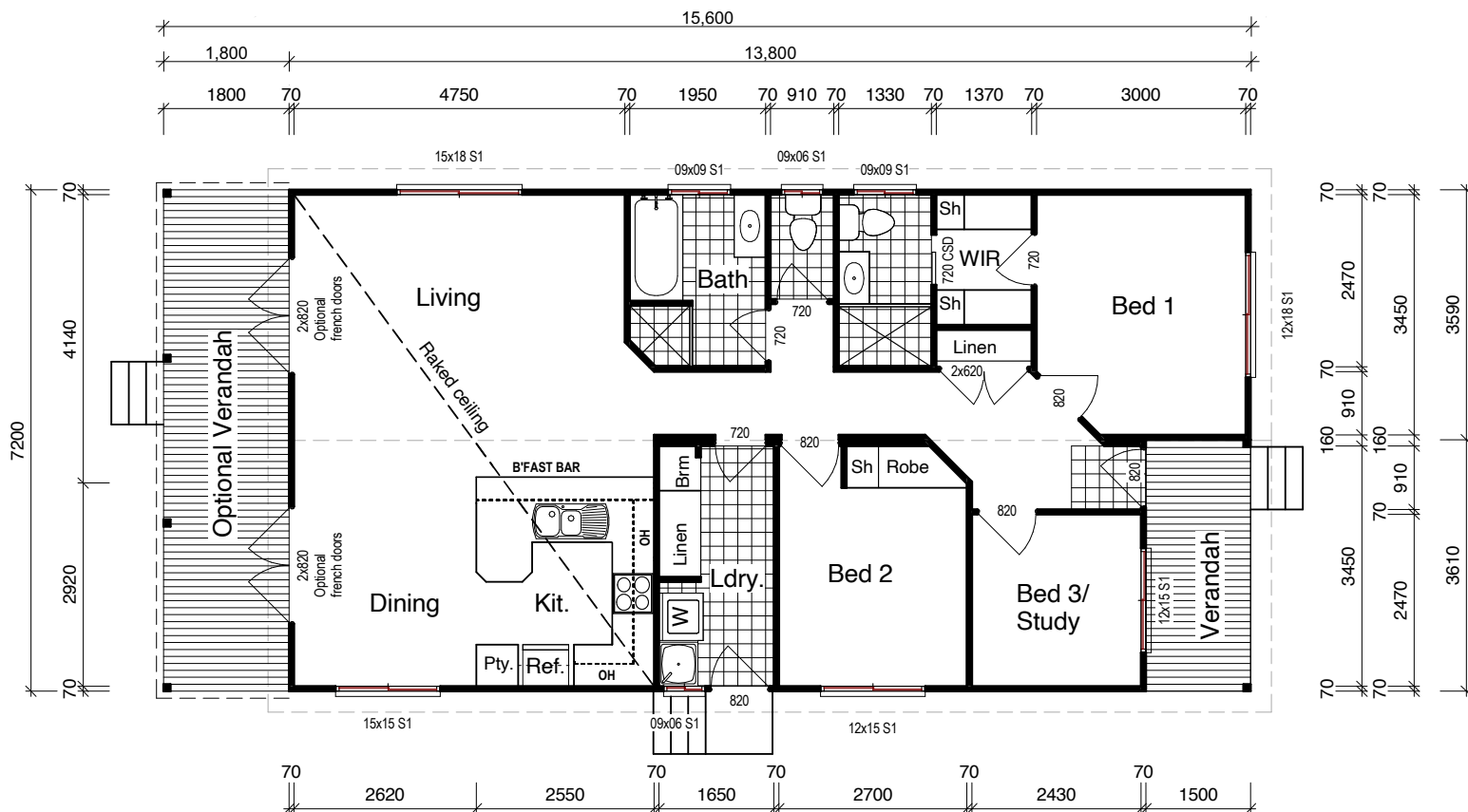
Main Floor: **93.96m²**
 Verandah: **5.40m²**
 Opt Verandah: **12.96m²**
Total: 112.32m²
 Width: **7.2m**

The Yorkshire I got a promotion... introducing Yorkshire III!

A feeling of luxury prevails as soon as you enter the door to the spacious entrance hallway. A luxuriously large master bedroom sits to the right including a galley style walk-in-robe and ensuite with a dreamy large shower, plus a vanity and toilet.

Continue past the double door linen cupboard, two more bedrooms, and a spacious bathroom including a bath, to the spacious living, dining and kitchen area. Add the optional French doors to the back verandah and include the timeless vaulted ceilings in the equation and this design pretty much spells d-r-e-a-m.

Boasting more than just space... this design also presents convenient storage in the laundry, plenty of storage in the kitchen with overheads and a side entrance via the laundry.





Façade Shown Classic



Cotswold I

Main Floor: **82.36m²**
 Verandahs: **12.68m²**
 Opt Verandah: **23.76m²**
Total: 118.80m²
 Width: **7.2m**

The Cotswold I design home is a prime design!

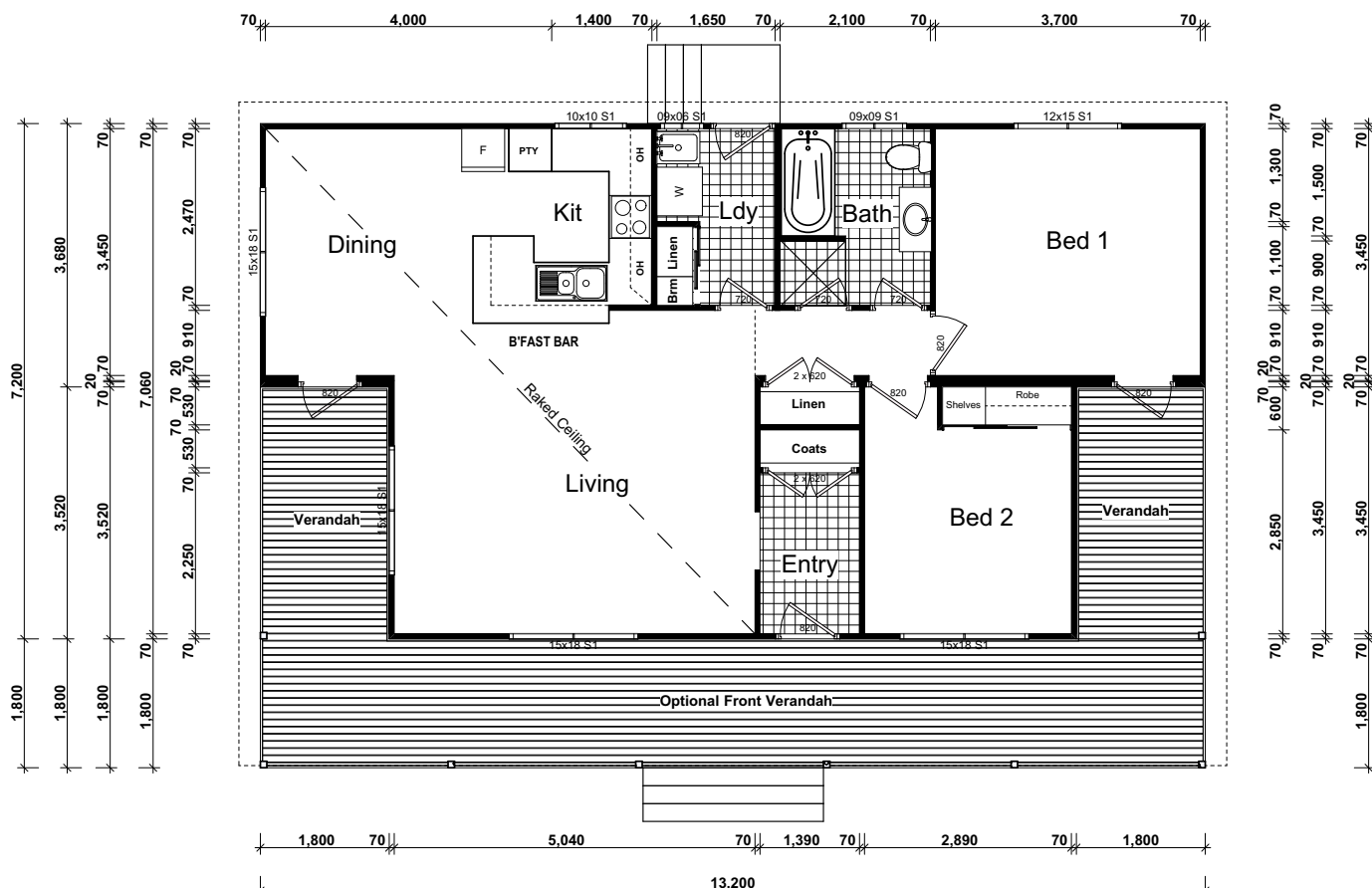
A separate entry gives this design a traditional welcome feeling... Pop your coat in the cupboard and come on through! With a raked ceiling covering the living, dining and kitchen you will feel at home straight away.

The kitchen opens into the dining and living with a practical and stylish breakfast bar, and the living and dining both connect well to the verandah.

The optional front verandah gives a homestead feel, wrapping around 3 sides of the home, so you are bound to capture a view.

Back inside, the master bedroom features the option of having its own access to the verandah... a must have on the wishlist!

With plenty of storage in the linen, coat cupboard, overhead kitchen cabinetry, laundry cupboard and built in robes in the bedrooms, the Cotswold I does not disappoint!





Façade Shown Classic



Cheshire

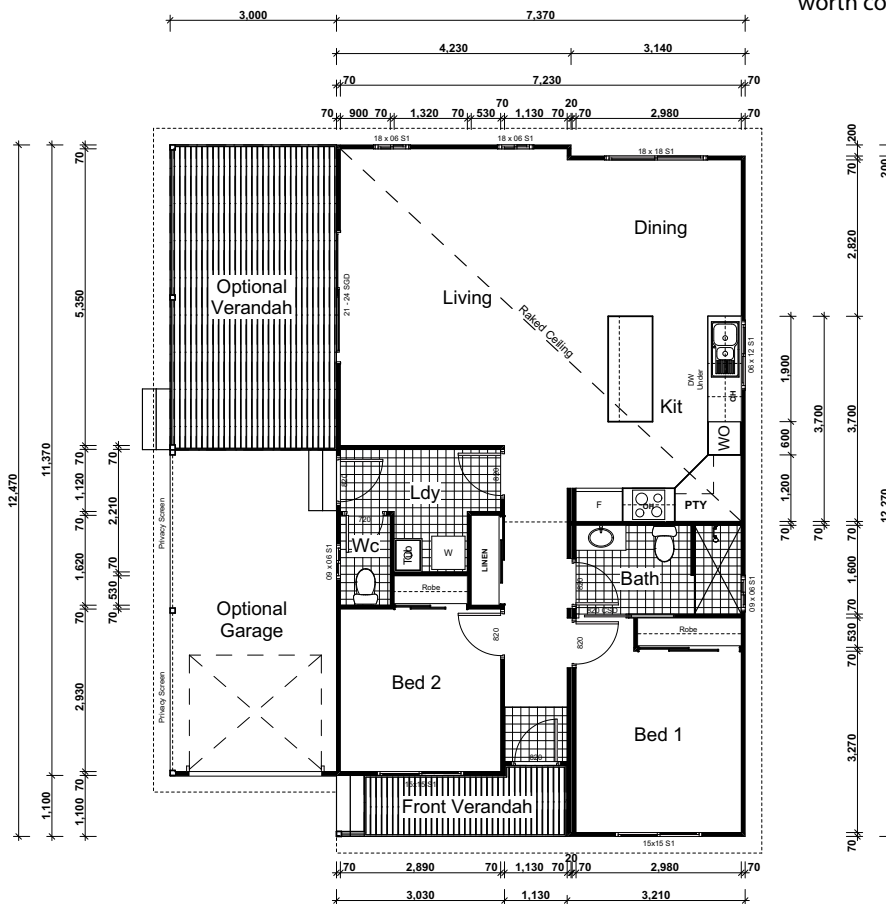
Main Floor: **86.50m²**
 Verandah: **4.78m²**
 Opt Verandah: **16.50m²**
 Opt Garage: **17.61m²**
Total: 125.39m²
 Width: **7.37m**

The Cheshire offers a modern design style with features built around a generous open living and kitchen configuration that really connects the living spaces and encourages easy entertaining from the heart of the home.

The kitchen features 2 sides of cabinetry with an island bench in between, helping the flow to the living space. The kitchen island also features a bar bench, and over in the corner is a large corner pantry which is a very popular addition.

A raked ceiling over all the living space really helps with a feel of luxury. If you choose to add the optional garage, there is conveniently close access straight from the laundry. With a bonus toilet and a walk-in-shower in the main bathroom, you'll be surprised at the feel of luxury in this home.

The Cheshire also features a large linen cupboard in the hallway for extra storage, and built-in robes in the bedrooms. An optional verandah at the back behind sliding glass doors has the potential to enlarge the living space a lot, another feature worth considering!





Façade Shown Cube



Cornwall 1

Main Floor: **91.94m²**
 Verandahs: **12.68m²**
 Opt Verandah: **26.15m²**
Total: 130.77m²
 Width: **7.2m**

Cornwall 1's extra-large living space gives the heartiest welcome to any who should enter.

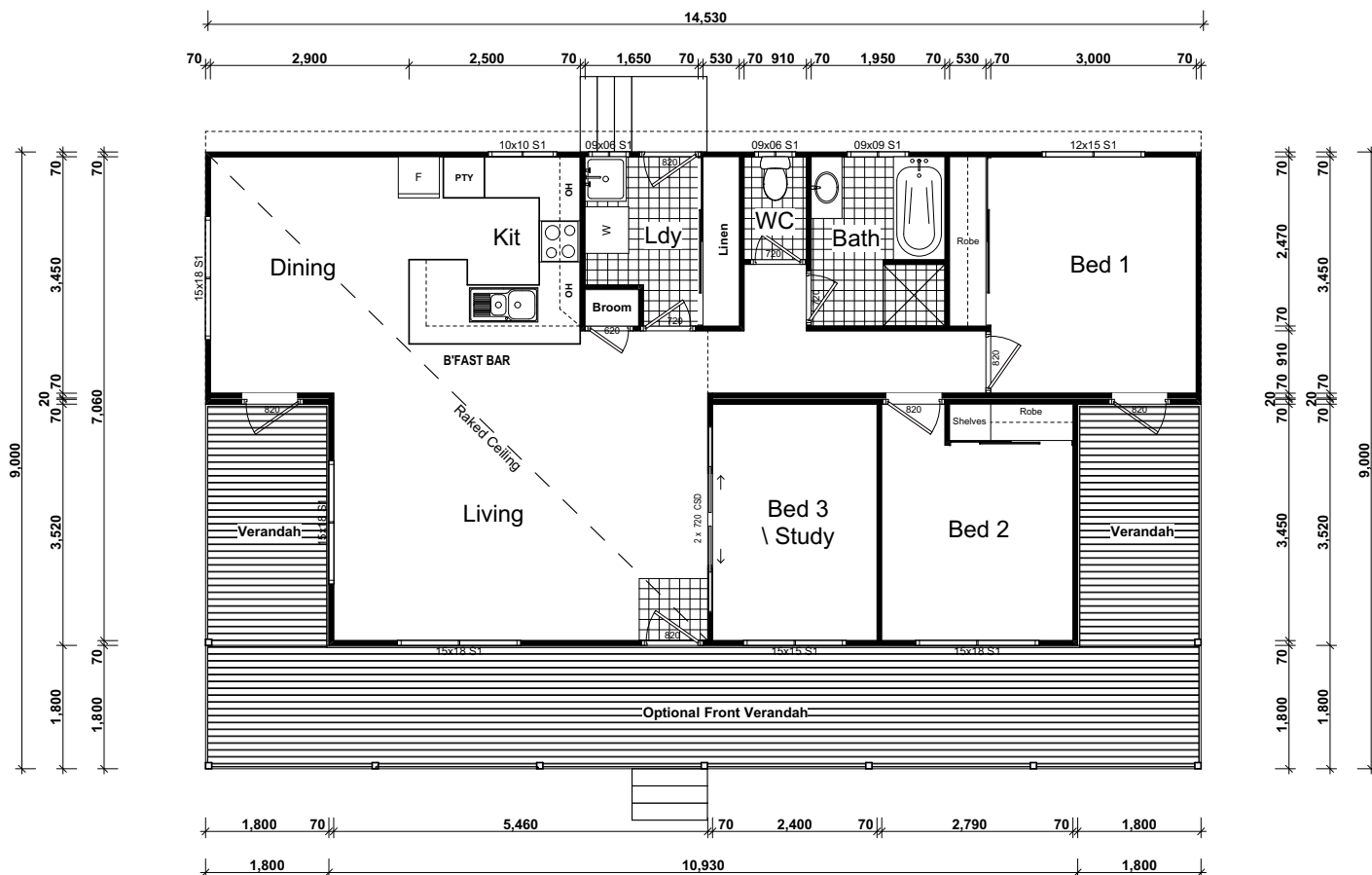
From the moment the door is flung open, the feel of space is expressed, with a well-placed raked ceiling, and a bonus space off the living room.

The bedrooms, bathroom, toilet and laundry all branch off the central hallway, and the spacious master and second bedrooms have convenient built-in wardrobes.

Awesome isn't it?!

The bathroom features a shower and bath and vanity, while the toilet is kept separate – a very handy solution ...and... a side entrance into the laundry provides much loved functionality.

An option of a homestead-style verandah and French doors to the dining room and master bedroom are available to make this home design another loveable choice!





Façade Shown Classic



Cornwall 2

Main Floor: **98.28m²**
 Verandahs: **6.34m²**
 Opt Verandah: **26.15m²**
Total: 130.5m²
 Width: **7.2m**

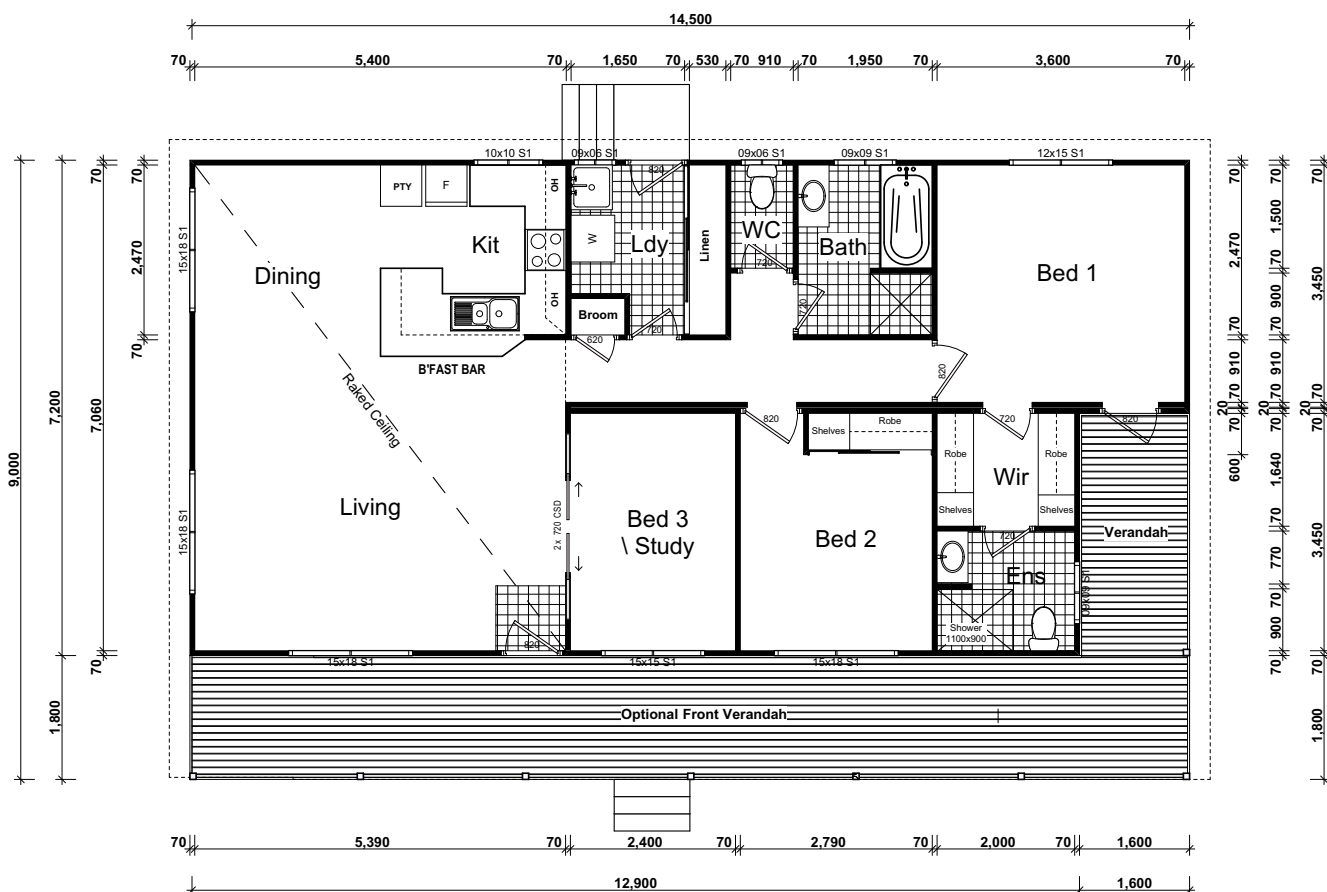
Home is where the heart is, and hasn't this home got heart? A variation of Cornwall 1, this design now features an open dining and living area, and an up-sized master - we have added approximately an extra 2 square meters to the size of the bedroom, PLUS, a galley style walk-in-robe, a luxury ensuite, AND, to finish off this 'suite'... imagine having that private door straight on to your own little section of verandah!

an open-plan dining room and partially open kitchen featuring... the breakfast bar!

Bedrooms, bathroom, toilet and laundry branch off the central hallway. And as for storage... the Cornwall II presents so much value... with an almost 2.5 meter long linen cupboard plus a convenient broom cupboard and kitchen overhead cupboards all part and parcel with this design!

Continuing along under the raked ceiling is Cornwall II's extra-large living room,

The laundry door can function as a side entrance, the main bathroom toilet has a separate door and the third bedroom offers flexibility and opportunity.





Façade Shown Timeless with a higher 23 degree roof pitch



Cornwall 3

Main Floor: **98.28m²**
 Verandah: **6.34m²**
 Opt Verandah: **26.15m²**
Total: 130.77m²
 Width: **7.2m**

This design allows for a separate dining to living area... what a prestigious feel!

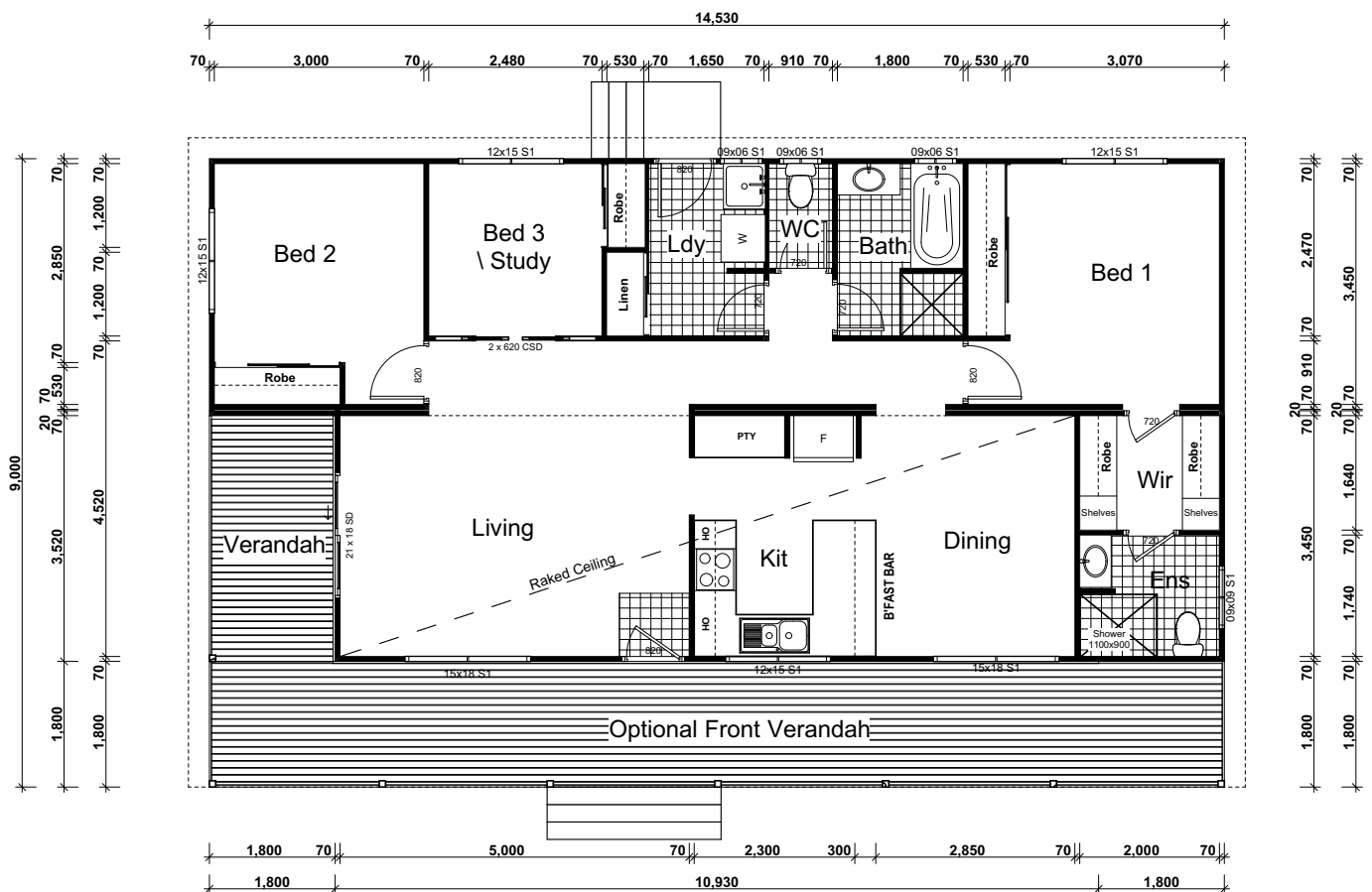
Having all the living areas across the front of the home, brings the optional front verandah into perspective, with living and outdoor areas flowing together through windows along the length of the balcony, and double sliding glass doors.

In the master bedroom, you'll be feeling spoilt with the walk-in-robe and ensuite, complete with a rectangle shower, vanity and toilet!

The third bedroom is positioned just off the living space behind double cavity sliders, proving itself to be a versatile solution for all lifestyle needs.

There are plenty of useful storage solutions in the Cornwall III design home, with an extra large pantry in the kitchen, and built-in robes in the bedrooms, as well as a linen cupboard in the laundry.

There is a lot to love when it comes to the Cornwall III, with raked ceilings and spacious living, this is an optimal design!





Façade Shown Traditional



Cotswold 2

Main Floor: **88.70m²**
 Verandahs: **6.34m²**
 Opt Verandah: **39.96m²**
Total: 135.00m²
 Width: **7.2m**

The Cotswold II takes home style living up a notch from its sister design, the Cotswold II!

Now featuring a beautiful walk-in-robe and ensuite attached to the master bedroom! The addition to the master suite, has allowed the living and dining areas to flow together in open manor creating a spacious welcoming once walking in from the entry.

The bathroom features a bath as well as a shower, toilet and vanity – and the modern rectangle showers in both the main bathroom

and the master ensuite, give the Cotswold II a breath of fresh air!

There's plenty of storage to love in the Cotswold II, with a coat cupboard, hallway linen cupboard, laundry linen and broom cupboard, kitchen overhead cabinetry and built in robes to the bedrooms!

Add the optional verandahs, and this home captures the essence of the great Australian dream... a verandah to sit down and relax on at the days end!





Facade Shown Timeless with a higher 24 degree roof pitch

3+ 2

Windsor

Main Floor: **103.68m²**
 Opt Verandah: **34.56m²**
Total: 138.24m²
 Width: **7.2m**

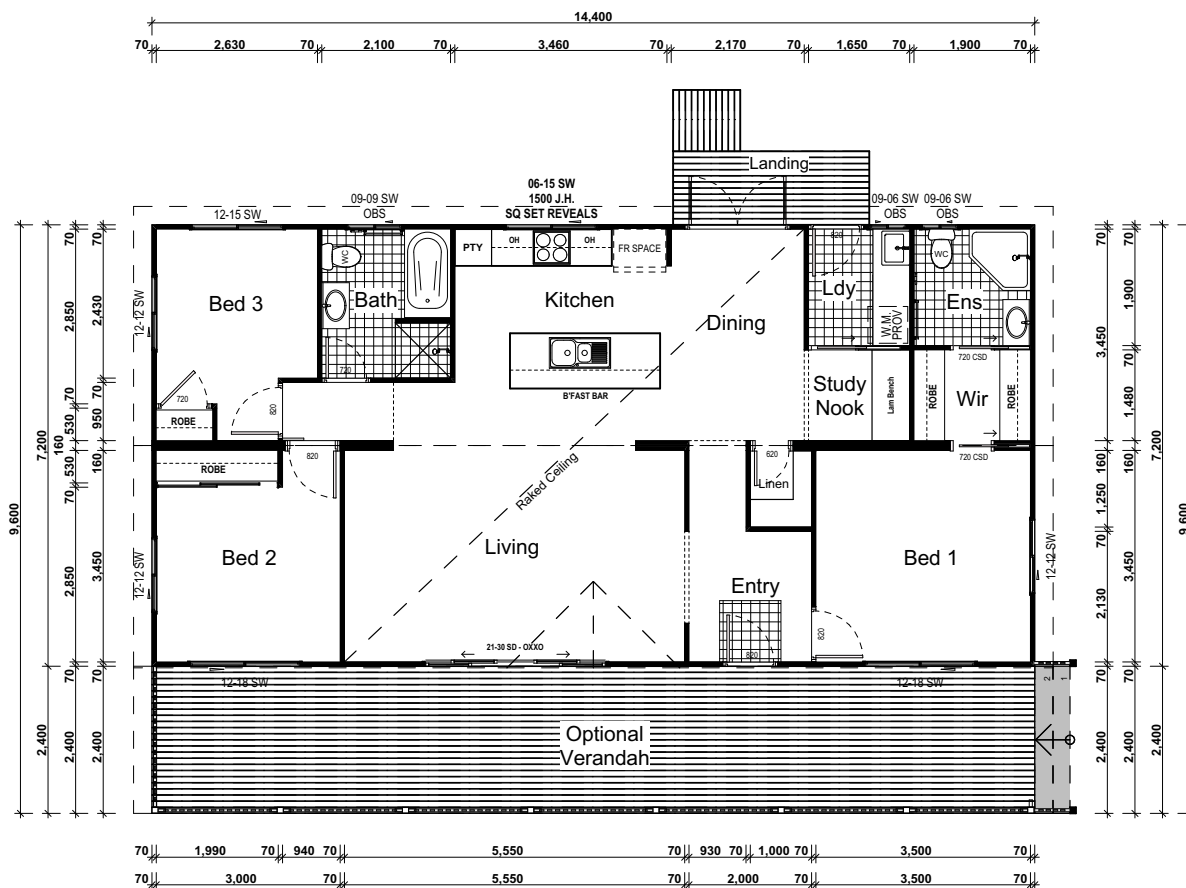
Once again, another design leaves us in awe. The Windsor design home brings a feeling of tradition, with modern functionality.

Enter in the front door, with the master suite to the right, and a large opening to the living space on the left. Through the walkway opening you will find the dining room and modern galley style kitchen with an island bench and breakfast bar. Light streams into the dining and living areas through double doors while a dramatic raked ceiling over the entire living zone gives an exceptional feel of space and luxuriousness.

Just off the dining room is a conveniently placed study nook, a walk-in linen cupboard, and the laundry, with plenty of bench space and an external entrance for added convenience!

With so many features, the second and third bedrooms can easily be zone out spaces for the kids or the visitors, and a full bathroom includes a well positioned bath.

The Windsor design home really is one for all ages to call 'home'.





Facade Shown Loft with Dormer Gables and a 40 degree roof pitch



Windsor Loft

Main Floor: **103.68m²**
 Opt Verandah: **25.92m²**
 Opt Loft: **45.62m²**
Total: 175.22m²
 Width: **7.2m**

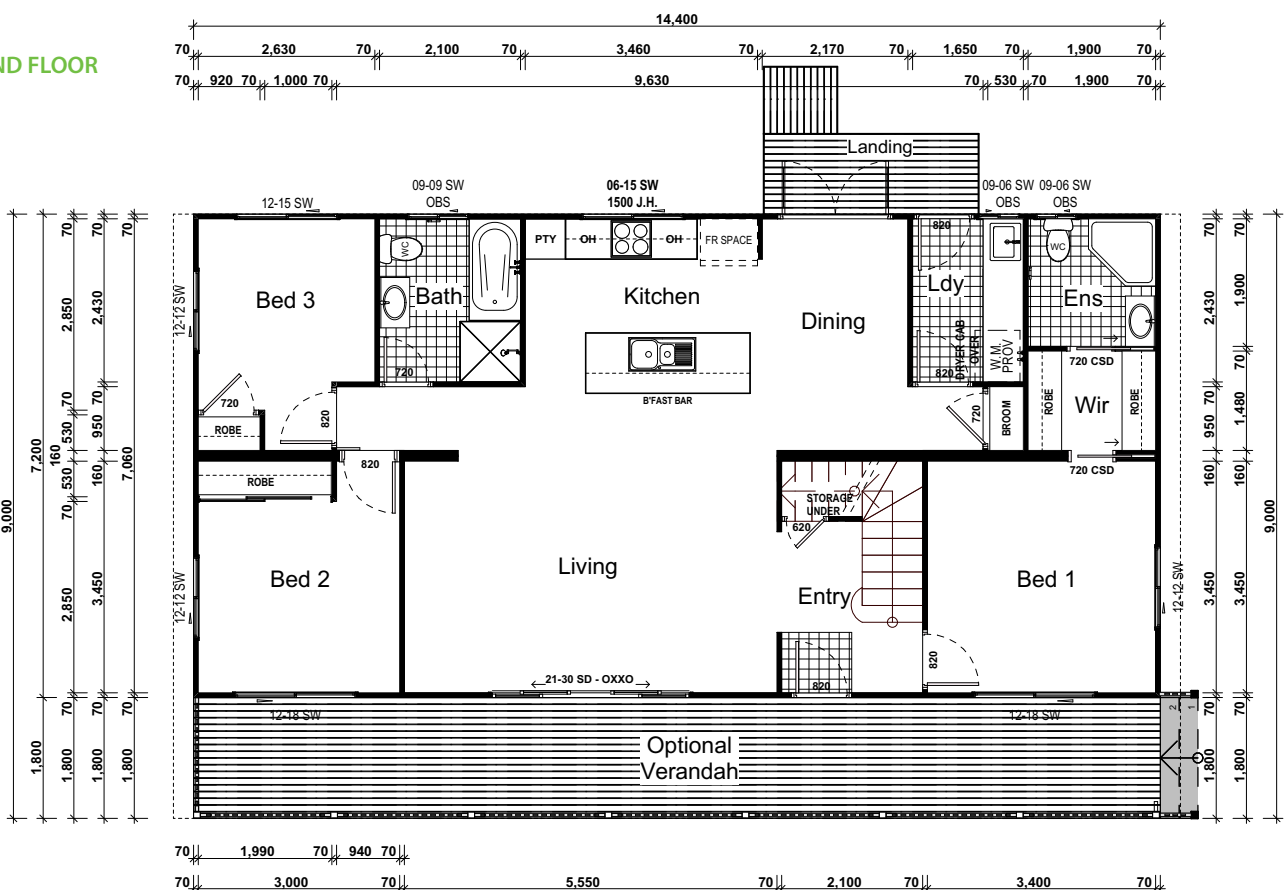
Nothing screams luxury more than opening the front door to a towering set of stairs leading to another entire space beyond view.

To the right of the stairs is a beautiful master suite complete with a walk in robe and ensuite. Through the wide and open walk way into the living area, you are heartily welcomed into a spacious living room hosting double glass doors out to the optional verandah. Towards the back of the home, you will find a modern galley style kitchen with an island bench and a breakfast bar, and just to the right

is some more dining space with double doors streaming light in and leading outside. There is a spacious laundry with generous amounts of bench space, and also plenty of storage in convenient locations around the home.

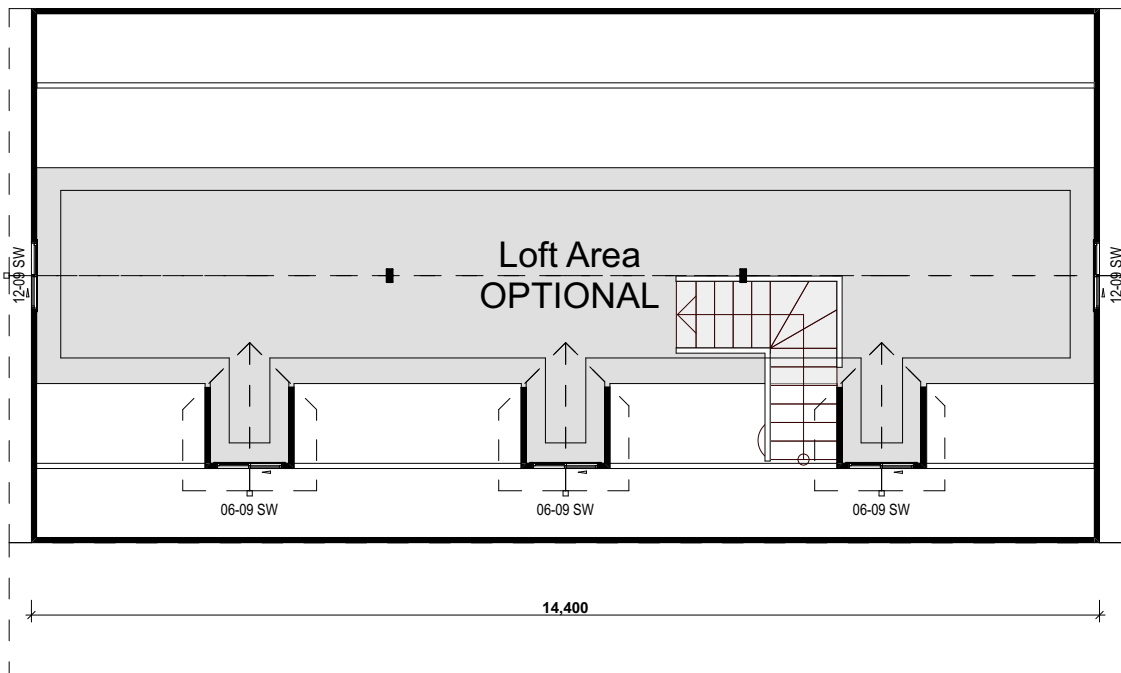
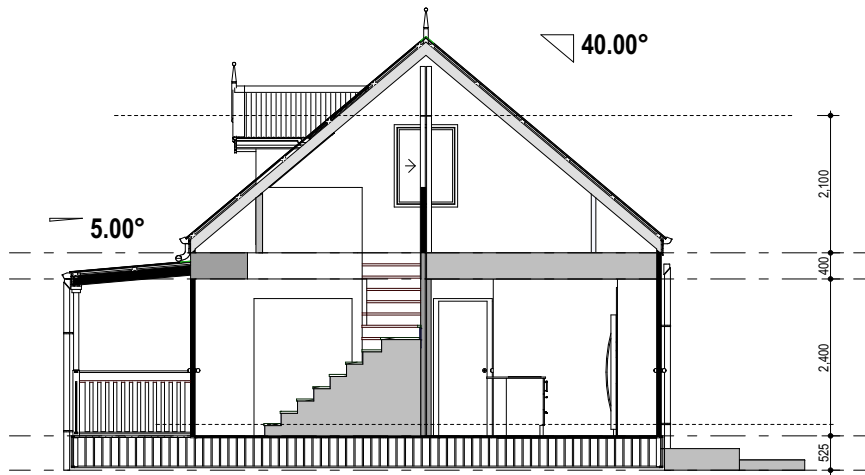
Last, but not least, The Loft. There is no other design like this. Giving style to both the inside and outside, the loft is a step up in all directions! The space can be used to cater to so many needs, it really is up to your creativity and lifestyle - perhaps play zones, home offices, sleeping quarters or media rooms, let your imagination go wild!

GROUND FLOOR





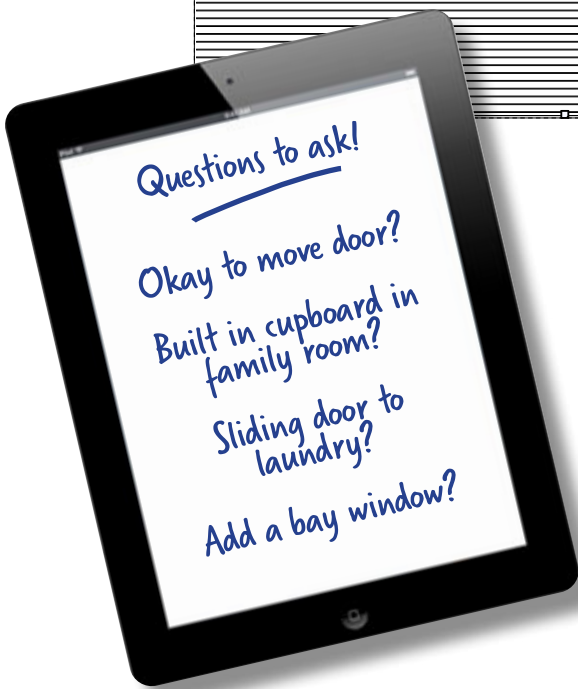
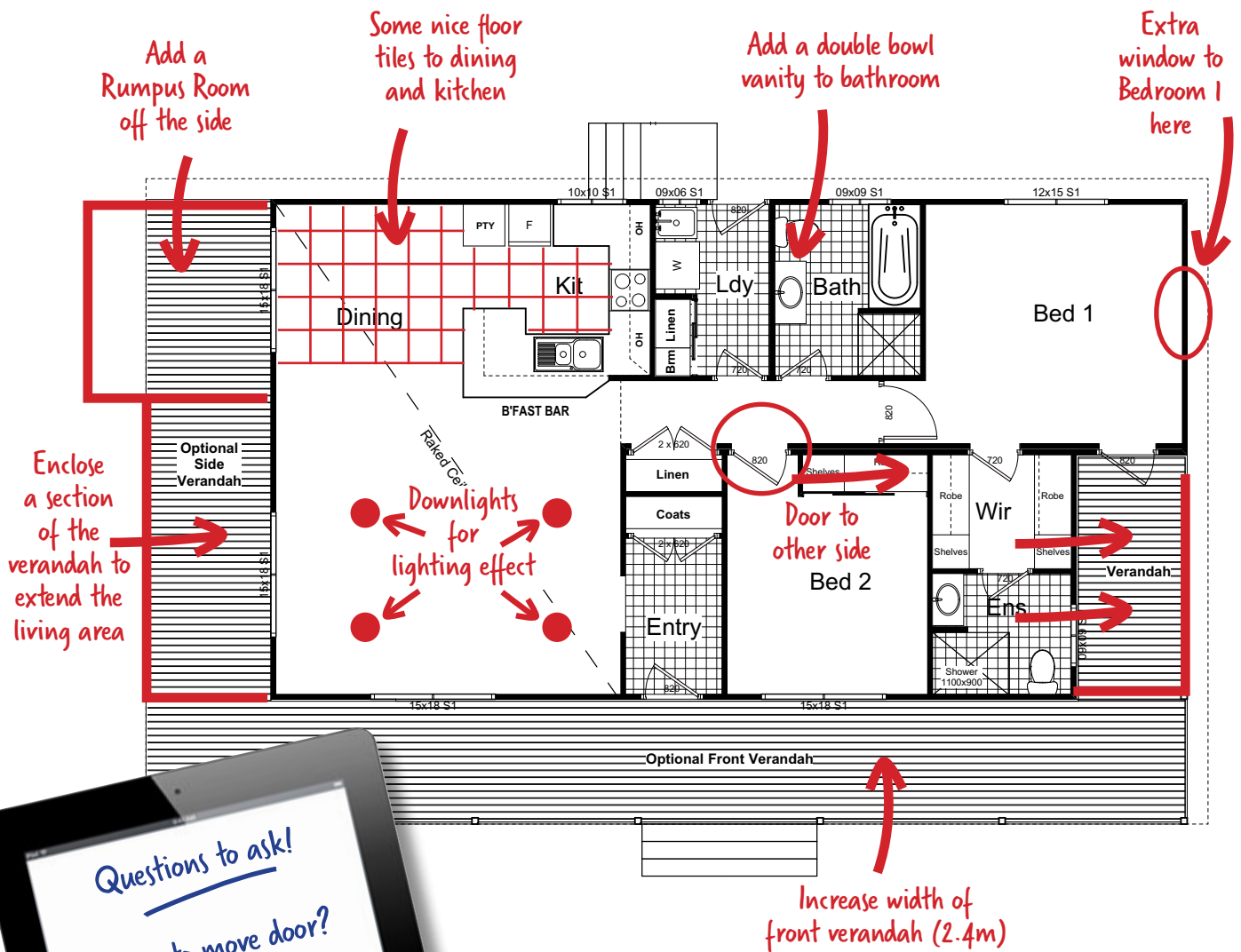
Add in a loft to almost any of our designs



Why not customise your plan like this example?

(Remember, with Asset Cabins and Homes you're not charged for changes unless materials/labour costs increase.)

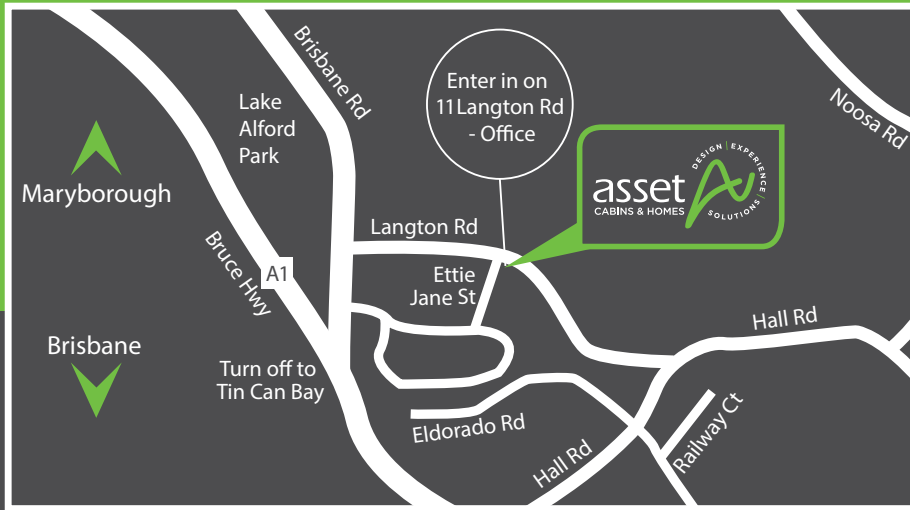
Cotswold 2 Amended



Freecall 1800 225 224

T: 07 5483 7144 | E: sales@ach.net.au | www.ach.net.au
11 Langton Road Gympie Qld 4570





Talk to Asset Cabins and Homes about:

- ✓ *The support of a Company that is more than just a manufacturer, and the confidence that your project is helped from approvals through to project completion with a qualified builder.*
- ✓ *The difference that 30 years of experience and manufacturing truly makes to the quality of the products you buy.*
- ✓ *The flexibility of our customisable home designs to meet your specific needs.*
- ✓ *The benefits that our professional solutions make to your building project.*



Freecall 1800 225 224
www.ach.net.au

T: 07 5483 7144 | E: sales@ach.net.au
11 Langton Road Gympie Qld 4570

QBCC License No. 1199395



Disclaimer

Due to our policy of continual product development, Asset Cabins and Homes reserves the right to alter specifications without notice and without incurring any obligation.