



THE STATES

BY ASSET CABINS & HOMES

A SIGNATURE RANGE OF ACREAGE HOMES



WELCOME TO OUR STATES COLLECTION

Thank you very much for your interest in our offering.
Enjoy browsing this brochure, and discovering style, distinction, versatility and above all, opportunities for you.

We extend an invitation to you to visit our display homes, and spend time with our experienced team...
You will soon discover how easy it is for us to suit your home to your specific needs.

Whatever your building project is, reach out to our friendly team, we're looking forward to working with you
more, remember that this brochure is really a small representation of our capacity, work and options!

All the best,



Ben Woodford
Managing Director



OUR COMPANY

Asset Cabins & Homes have been bringing quality products to the modular market for 30 years.

Experience, value and support are three words that express Asset Cabins & Homes today. Our mission is to provide a quality building experience for our customers, create proficiency through culture driven strategies and create a work environment where everyone benefits, including the community.

As a keen spirited team, we love any idea of a challenge or a big dream... in modular form. This is what propels us to keep going, helping customers express their visions, personalities, and values. We're happy to support so many local team members. Each one plays a vital role in bringing together your building project... as we know "your team is your biggest asset!"

2012 brought with it a new premises for Asset Cabins & Homes, with over 1660 square metres of undercover construction area, which has helped us launch onwards and upwards to the future with the vision to be the most trusted advisor and supplier of modular homes in the industry... providing innovative, highly sought-after quality products and project solutions that help our clients achieve their goals.

With over 1,000 modules under the lovely Queensland sun, we invite you to join our list of happy customers!





THE ASSET ADVANTAGE

When you buy from Asset, you have the benefit of over 30 years experience in the modular building industry.

We help with:

- ✓ Carefully managed production facilities to produce to your exact specifications
- ✓ Maximising energy efficiency in your new building to minimise your running costs
- ✓ Optimising sloping sites to save on scaffolding costs
- ✓ Expediting council applications and approvals
- ✓ Installation on difficult sites
- ✓ Disability and assisted access facilities
- ✓ Lower maintenance costs due to thoughtful design and detail
- ✓ On-time construction from our undercover facilities
- ✓ Streamlined manufacture process with the savings being passed straight back to you



No hidden surprises

We work on a policy of having a 'No Hidden Surprises' contract.



8 year structural warranty

We build to full residential building standards to ensure compliance with the National Construction Code and we back it with an 8 year structural warranty.



Flexible designs

We have flexibility in our designs to suit your specific needs.



TALK TO ASSET CABINS AND HOMES ABOUT:

- ✓ The support of a Company that is more than just a manufacturer, and the confidence that your project is helped from approvals through to project completion with a qualified builder.
- ✓ The difference that 30 years of experience and manufacturing truly makes to the quality of your home.
- ✓ The flexibility of our customisable home designs to meet your specific needs.
- ✓ The benefits that our professional solutions make to your building project.

CONTENTS

ACH | THE STATES

Welcome to the Collection	3
Our Company	5
The Asset Advantage	7
Contents	9
About the Collection	11
Bring Your Families Closer	13
Custom Built Kitchens	15
Inclusions	17
Quality Assured Client Care	19
Facades	20
The Asset Approach	23

THE STATES COLLECTION | PLANS

Dakota 202	26
Nevada 217	28
Colorado 254	30
Arizona 261	32
Arizona 265	34
Montana 328	36
Oregon 394	38
Virginia 181	40
Arizona 292	42
Arizona 297	44
Montana 362	46
Colorado 290	48
Montana 340	50
Oregon 430	52
Colorado 476	54
Customise your plan	57
3D Cutaway	58



ABOUT THE COLLECTION

The States Collection offers acreage size homes for growing families, prioritising classic design with seamless layouts to enhance residential lifestyle.

Beyond the impressive facades, our home plans are designed for you to enjoy spacious, comfortable, low maintenance ground floor living, featuring dedicated kids' areas, studies, sculleries, and walk-in-robos.

Either traditional or modern, generous flexibility in design ensures that your home is one that you love. Our guarantee is that this collection offers a homely, yet stately, feel to ensure you live well & feel good.





BRING YOUR FAMILIES CLOSER

The States homes are designed for families.

The centralised living zones create gathering places for the family, where the fondest memories are made.

Seamless indoor to outdoor integration creates unity in your home plan - creating a light-filled, expansive space connected to the great outdoors.





CUSTOM BUILT KITCHENS

Asset Cabins and Homes create beautiful interior environments that suit your style and budget.

Our expert Creative Services team can help you to choose colour schemes, materials and appliances. We also provide practical advice to maximise space perception and minimise maintenance.





INCLUSIONS

Discover your style with a selection of inclusions that gives you the ability to upgrade, personalise and indulge. Freedom in design means you create a home you love.

Our design team will guide you towards the best flooring, fittings, vanity, appliance and tiling options for your home. Where functionality and style meet, you're guaranteed to be satisfied with the quality and feel.

See our Inclusions Book for more details.





QUALITY ASSURED

You'll have peace of mind, because every Asset Home has a rigid galvanised steel base and termite-treated timber or steel frame.

Assembly is conducted inside our undercover custom factory. Standard features include cyclone ratings and soil testing for structural integrity and materials selected to weather our harsh climate zones.

You can expect many years of dependable service and minimal maintenance with Asset's modular homes. They're constructed to the highest standard, and they fully comply with the relevant Queensland building legislation.

The service continues after installation, with 12 months' maintenance included and an 8-year structural warranty.

All residential construction work is covered by the Queensland Building and Construction Commission Insurance scheme.

CLIENT CARE

We recognise that building projects can be overwhelming, let us guide you through the building process from initial design through to delivery and handover of your project.

We are dedicated to working closely alongside you to ease the process and ensure you are satisfied with your new home.



FACADES

Our States Collection features a range of facade options. Upgrade any floor plan with a facade of your choice.

** Check with your design consultant as some of these designs work best with level ceilings throughout in lieu of cathedral ceilings*



Design

Dakota 202
Nevada 217
Colorado 254
Arizona 297

METRO

The Metro facade is for those who love urban design, where clean lines and bold textures are the foundation to modern curb appeal.

Split skillion rooflines create a larger sense of space internally while maintaining comfortable internal living temperatures. Mixed claddings and colour palettes play an important role in achieving the metro appeal, giving you the freedom to choose multiple contrasting or complementary textures. The metro facade flows from the outside in, where the internal layout employs functionality and sophistication.



Design

Colorado 476
Oregon 430
Oregon 394

RANCH

The Ranch facade is influenced by the architectural style of a Western American home, yet redefined to appeal to the Australian lifestyle. This perfect combination guarantees curb appeal and is ideal for those who love the country vibe. Whether a u-shape or l-shape home, the ranch facade features expansive verandah areas with accent hardwood posts.

Centered verandahs enter into large open plan living with seamless integration to outdoor areas. Large windows capture maximum sunlight for passive heating and cooling, creating consistently comfortable temperatures throughout the wide-open internal spaces.



Design

Montana 328
Arizona 261
Montana 340
Arizona 265
Virginia 181
Arizona 292

CLASSIC

The Classic facade will stand the test of time with functional, practical and elaborate design features, making your house feel like home for years to come. Traditional and timeless, the gabled roofs feature ornate infills and add character to the home. Central verandahs are complemented with balustrades, hardwood posts and intricate verandah brackets. Classic facade accommodates lighter colour palettes with rich textures and stone accents.

Large colonial windows make a bold statement, maximising sunlight & airflow throughout living areas. The Classic facade is for the families who love to entertain, where the heart of the home is dedicated to family living and dining with integration to the outdoors.



Design

Colorado 290
Montana 362

CONTEMPORARY

The contemporary facade is inspired by geometric shapes, clean lines and minimalistic design to be aesthetically pleasing. Large front and rear verandahs create inviting home entrances where both open into the main living areas.

The Skillion roof and large windows maximise energy efficiency allowing sunlight entry and airflow into living areas for passive heating and cooling all year round. Clerestory windows allow for ventilation through to living areas and consistent airflow throughout the home. This eco-friendly façade features subtle colour schemes and uses natural materials for maximum sustainability. The layout is perfect for families, with centralised living and outdoor areas that branch out to private sleep wings. Home design trends constantly change yet the contemporary facade will stand the test of time.



PICK YOUR
DREAM
LOCATION

THE ASSET APPROACH

OUR 7 STEPS TO CLIENT SATISFACTION

Our proven process ensures your building project is a successful and positive experience with a rewarding outcome.



1

Analysis

The better we understand your needs, the more we can provide exceptional solutions; so we start with an in-depth analysis of your requirements and site. A site visit is also taken to make sure we are aware of all aspects of your home requirements and assist you to take advantage of the best orientation to maximise environmental benefits.



2

Initial Design & Specifications

Our expert team can design and specify an initial concept based on our understanding of your needs and incorporate any additional requests.



3

Final Design & Proposal

After working together to achieve a design and specification solution that fulfils your vision, a detailed fixed price proposal is then finalised to allow you to move ahead to make your vision a reality.



4

Colour & Finishes Selections and Building Approvals

Our team can offer guidance and advice on colours and finishes plus we can tailor your project to your specific tastes and requirements.

We also take care of whatever steps the Building Approval Process requires.



5

Construction

Based on your documented selections and approvals, we then move into our streamlined construction phase. You are kept informed of progress and we welcome your inspection at any time.



6

Delivery and Installation

Once construction is complete our specialist team deliver your new cabin or home to your site and complete all installation works.



7

Final Details

After completed installation the building is inspected in detail to ensure your satisfaction and a Building Certificate is provided.




THE STATES COLLECTION PLANS

Our range of fully customisable floor plans are designed to meet your requirements and exceed your expectations.


Icon Key

 Bedrooms

 Bathrooms

 Toilet

 Study

 Laundry





Artist Impression only

DAKOTA 202

Façade Shown Metro



Main Floor:	140.21m ²
Front Verandah:	6.34m ²
Rear Verandah:	12.54m ²
Garage:	42.98m ²
Total:	202.07m²
Width:	14.6m

The Dakota 202 is the ideal home for raising a small family, with the perfect balance of functionality and lifestyle living.

Clean lines, contemporary claddings and spectacular rooflines create a modern and stylish home. A welcoming verandah entrance leads into the main living areas and flows through to family and sleeping areas.

For those who love to entertain and bring the outside in, the emphasis on indoor to outdoor integration is clear. Create fond family moments in the kitchen, complemented with the breakfast bar for serving family meals on the go.

Internal access to the garage keeps you dry on those rainy days and the laundry offers direct access to the outdoors allowing airflow throughout the home. Ample storage provisions help you stay organised when life gets busy.

The full size master suite is designed for relaxation and is fitted with an ensuite and walk in robe.

The Dakota 202 has well designed spaces for maximum livability, accommodating your needs for a lifetime.





Artist Impression only

NEVADA 217

Façade Shown Metro



Main Floor:	179.8m ²
Verandah:	6.2m ²
Rear Verandah:	30.91m ²
Total:	216.91m²
Width:	12.54m

The Nevada 217 is a functional family home suitable for all ages and lifestyles, with the perfect balance of open plan living and private spaces.

If you're chasing urban design and great curb appeal, this home is for you. The internal layout is centered around open plan family areas. Indoor to outdoor integration between kitchen, dining and verandah creates an airy light filled environment, great for energy efficiency within the home.

The kitchen and walk-in pantry is well designed for you to entertain, socialise and serve your guests.

Back to the daily routine, the laundry and walk-in linen closet has an exit to the backyard, shortening your trip to the clothes line.

Keep the kids occupied in dedicated media and study areas, where the toys and school projects stay clear from the living areas. The private main suite is an excellent retreat, ideal for relaxation and enjoying a solid night's sleep.

With a sophisticated yet stylish internal layout, this deluxe home is ideal for growing families, or couples who love to entertain.





Artist Impression only

COLORADO 254

Façade Shown Metro



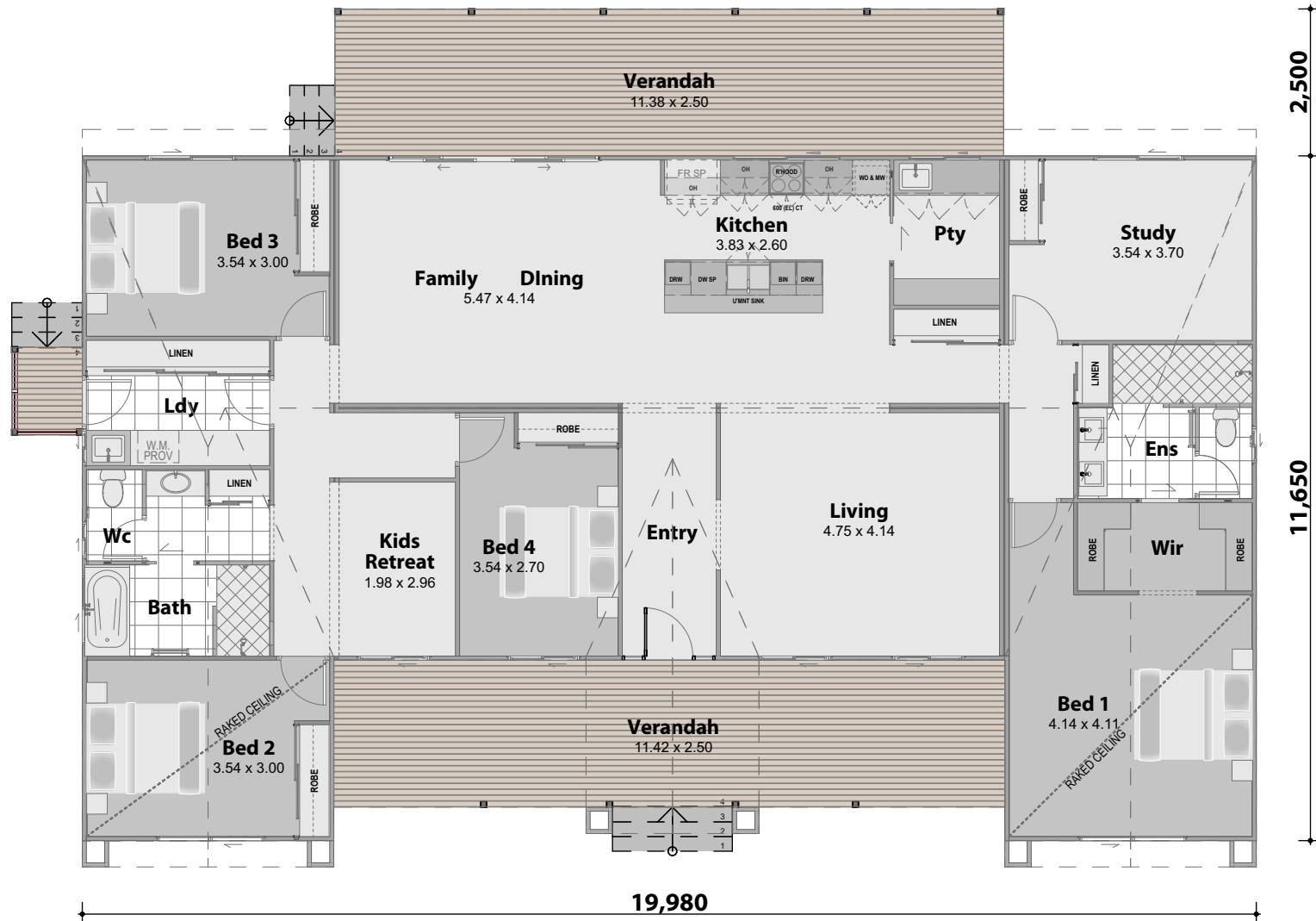
Main Floor:	197.71m ²
Verandah:	28.55m ²
Rear Verandah:	28.45m ²
Total:	254.71m²
Width:	19.98m

The Colorado 254 is full of character from the outside-in, with a striking facade and great internal layout, this masterpiece is the ultimate contemporary family home.

Light colour tones and mixed claddings create a timeless appeal. Three bold gables and internal raked ceilings add depth and height for maximum sunlight and airflow throughout the home. Start and end the day together in family oriented zones, with centralised kitchen and breakfast bar for serving, dining and chatting together. Integrated to the outdoors, this spacious family zone becomes a communal area for guests to spend time together.

Retreat to separate living that opens to sunlight, breezes and outdoor views for time with loved ones. The kids retreat is a great noise buffer and a space for toy storage and study. A multi-use study area is private and sizeable with bonus storage space. The front wing of the home is dedicated to the main suite, a generously sized area complete with a walk-in robe and ensuite.

Multiple storage cupboards throughout the home is ideal for flexible organisation and decluttered living. The Colorado 254 will be your families happy place for a lifetime.

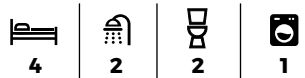




Artist Impression only

ARIZONA 261

Façade Shown Classic



Main Floor:	167.35m ²
Front Verandah:	63.44m ²
Rear Verandah:	30.40m ²
Total:	261.19m²
Width:	21.61m

The Arizona 261 is a well-structured and balanced home, with rich textures and finishes, classic Australian design.

The wrap around verandah creates a charming entry to the home, offering multiple viewpoints, capturing sunlight and airflow throughout the home. The home is designed with emphasis on energy efficiency, for sustainable living and lower energy costs.

The Arizona 261 design features a bold, gabled portico entry - a statement feature that highlights the entry to the home.

Enjoy cooking, dining and entertaining as a family in the open plan kitchen and dining, seamlessly integrated to the outdoor verandah; creating the perfect social environment.

The master suite is the perfect sanctuary with an ensuite and walk-in robe. For family members, all bedrooms have an outlook to the front verandah, ample storage and a bonus study nook to bedroom 2. The dedicated bathroom area also features a separate toilet for convenience.

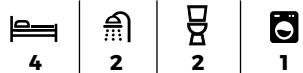




Artist Impression only

ARIZONA 265

Façade Shown Classic



Main Floor:	170.87m ²
Front Verandah:	64.30m ²
Rear Verandah:	30.40m ²
Total:	265.57m²
Width:	22.02m

The Arizona 265 is a generous and charming design, perfectly created for smaller families or couples.

Large colonial windows, passive cladding tones and the expansive front verandah make you feel welcome every time you return home. The internal layout is designed for functional, organised living with ample storage space throughout the home. Considered indoor to outdoor integration creates effortless transitions between the family areas, generous open plan areas that allow for air flow and ample sunlight to maintain comfortable living temperatures and maximise energy efficiency.

All bedrooms have an outlook to the front verandah, ample storage and a bonus study nook to bedroom 2. The dedicated bathroom area features a separate toilet for privacy.

For the parents who need peace from the chaos of everyday life, the innovative design of the main suite is ideal with a sizable ensuite and a bonus, spacious walk-in robe (a variation from the Arizona 261 design).





Artist Impression only

MONTANA 328

Façade Shown Classic



Main Floor:	223.92m ²
Front Verandah:	31.37m ²
Rear Verandah:	31.38m ²
Garage:	42.07m ²
Total:	328.74m²
Width:	21.11m

The Montana 328 is a classic home with a Hamptons inspired facade - balanced textures of cultured stone and neutral tones, large colonial windows, and a traditional roofline with gable features.

This ageless design is great for growing families or retirees. The functional internal layout enables you to personalise the home with multiple spaces to suit your lifestyle.

Cook up a storm for family or guests in the open plan kitchen and dining areas, made easy with practical internal access from the garage. Integrated to the outdoors, this spacious

family zone becomes a communal area with maximum sunlight and airflow throughout these zones which is great for energy efficiency.

The main suite is enhanced with an ensuite and a bonus walk-in robe. Family members can retire to their own wing or close the doors and watch a movie in the luxurious, platformed theatre room. There's ample storage to each room plus linen cupboards throughout the home for organised living.





Artist Impression only

OREGON 394

Façade Shown Ranch



Main Floor:	204.38m ²
Verandah:	189.98m ²
Total:	394.36m²
Width:	28.62m

The Oregon 394 captures the classic features of an Australian station with large open spaces, high internal ceilings and a full wrap around verandah for the ideal country lifestyle.

Enter into the heart of the home, dedicated to family and living areas. Enjoy cooking, dining and entertaining as a family in the open plan kitchen and dining, seamlessly integrated to the outdoor verandah for the perfect social environment. The well-planned kitchen is complemented with a walk in pantry, with direct access to the dining and laundry with a wraparound verandah.

A full sized main suite offers you privacy with a large ensuite and walk-in robe. Generous room sizes and robes for each family member, with access to a bathroom and toilet for maximum convenience. Flexible layout to suit your lifestyle with multi use rumpus and study areas. Two entrances to the laundry allows easy access to the backyard and linen cupboard, and affording great air flow throughout the home for comfortable internal temperatures.

If your family loves a home that's fully connected to the outdoors - the Oregon 394 is for you.





Artist Impression only

VIRGINIA 181

Façade Shown Classic



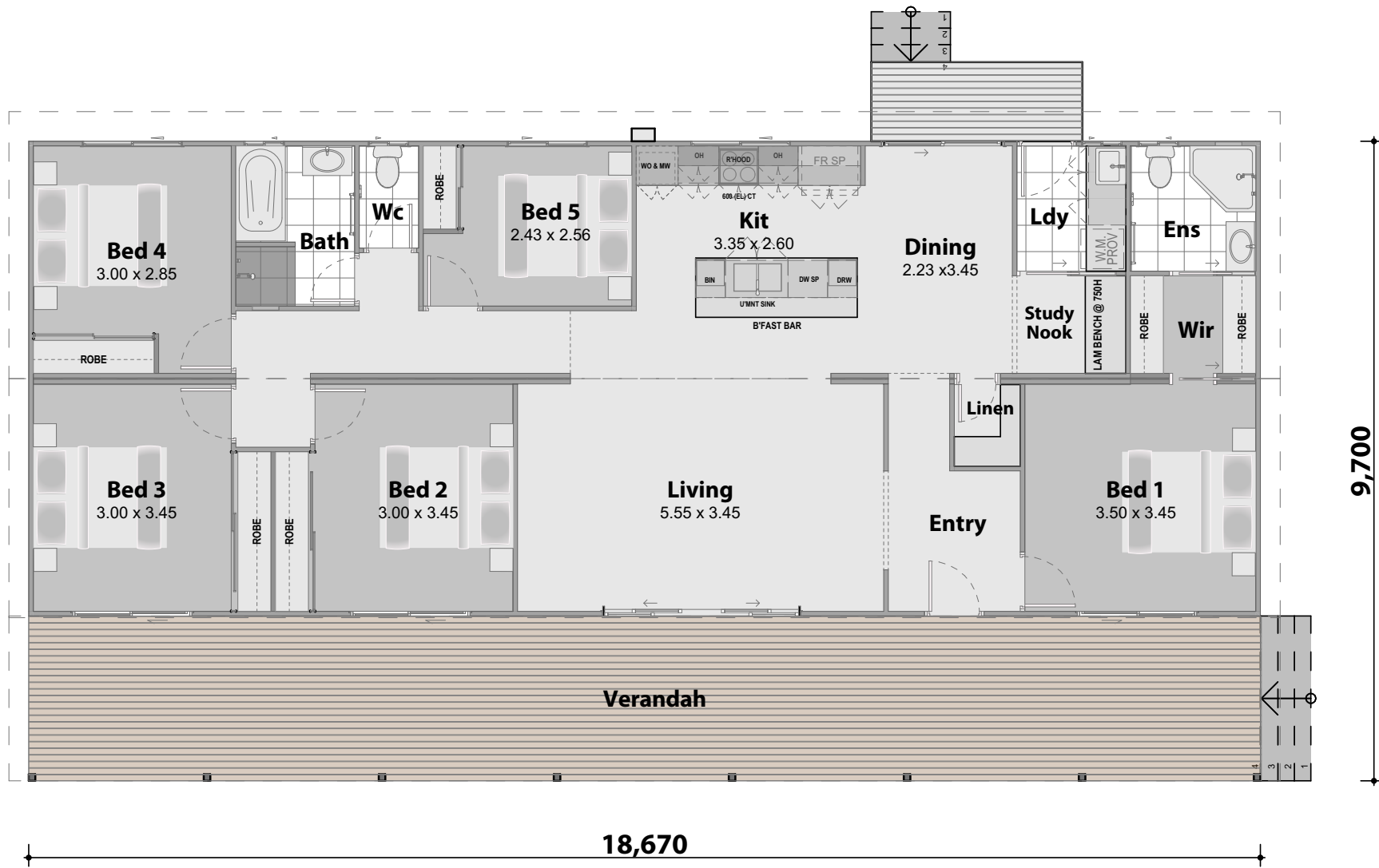
Main Floor:	134.42m ²
Front Verandah:	46.68m ²
Total:	181.10m²
Width:	18.67m

The Virginia 181 is a picture book farmhouse design, characterised with criss cross balustrades, vibrant colour palettes and a cozy interior.

The classic facade features a steep pitch gable roof, welcoming porch entry and homely external design. Relax and watch the world go by on the sun filled, full length verandah surrounded with large windows for abundant sunlight and airflow throughout the home.

In the center of the home is the kitchen, complemented with a breakfast bar, creating the perfect family zone for cooking, serving and socialising. The internal layout allows you the flexibility to use the connected spaces to best suit your lifestyle.

Generous storage spaces to each room also means a decluttered environment. Both functional and cozy inside, you will love coming home to this heartwarming country classic.





Artist Impression only

ARIZONA 292

Façade Shown Classic



Main Floor:	197.59m ²
Front Verandah:	70.37m ²
Rear Verandah:	24.00m ²
Total:	291.96m²
Width:	25.09m

The Arizona 292 is a family-oriented home with a functional, flowing layout and classic facade.

A recessed roofline, elaborate verandah brackets and gable infill. Complementing this, is a timeless colour scheme and timber claddings

A functional indoor to outdoor integration creates effortless transition between family areas. With air flow and sunlight, your home will maintain comfortable living temperatures, maximising energy efficiency.

This generous open plan design allows you to retreat or engage in separate living zones. The study can also double as another bedroom for those extra guests that will want to visit your beautiful farmhouse style home. A full sized main suite is complemented with an ensuite and a generous walk-in robe for storage.

Attending to washing is made easy with two entrances to the laundry. Generous storage throughout the home enables decluttered living spaces and easy maintenance.

The Arizona 292 is a fantastic family home choice.





Artist Impression only

ARIZONA 297

Façade Shown Metro



Main Floor:	197.59m ²
Front Verandah:	70.37m ²
Rear Verandah:	29.16m ²
Total:	297.12m²
Width:	25.09m

The Arizona 297 is for those who love minimalistic and modern design - mixed claddings, straight lines and a flat roofline create the bold, cube facade.

A cantilever roofline shades the front face of the home from harsh sunlight to maintain a comfortable internal living temperature. This facade allows for 9ft ceilings, a feature not always possible in other facades on modular homes! Pair this with open plan family and living areas and you create a grand sense of internal space, seamlessly integrated to the outdoor verandah for the perfect social environment.

Enjoy cooking, dining and entertaining as a family in the well-planned kitchen, complemented with a walk in pantry, with direct access to the dining and verandah. Gather with family and friends in the formal living room or settle in for a movie in the media room.

The full size master suite is stylishly designed, fitted with an ensuite and walk-in robe. There are robes to all bedrooms, a separate toilet and bathroom for convenience. Generous storage space to each room enables decluttered living spaces and easy maintenance.





Artist Impression only

MONTANA 362

Façade Shown Contemporary



Main Floor:	246.50m ²
Front Verandah:	33.58m ²
Rear Verandah:	44.97m ²
Carport:	37.20m ²
Total:	362.25m²
Width:	21.99m

The Montana 362, defined by dark monochrome claddings, has clean, contemporary lines and a split Skillion roofline.

Raked ceilings in the heart of the home, create a sense of space and openness within. With an abundance of natural light and ventilation to maintain comfortable internal temperatures, the Montana 362 maximises energy efficiency.

Indoor to outdoor integration creates effortless transitions between family areas, the perfect entertaining environment to gather by the fireplace in the formal living, with views to the front and rear of the home. Keep the kids occupied in

media and kids retreat, where the toys and school projects stay clear from the living areas.

Your main private suite is complemented with a walk-in robe, ensuite and walk-in shower. Family members enjoy generous sized rooms and robes, with access to a bathroom and water closet for maximum privacy.

Stay organised when life gets busy with ample storage provisions throughout, internal access from the garage and direct laundry access to the outdoors for a balance of functionality and lifestyle.





Artist Impression only

COLORADO 290

Façade Shown Contemporary



Main Floor:	223.96m ²
Front Verandah:	39.07m ²
Rear Verandah:	26.95m ²
Total:	289.98m²
Width:	23.05m

The Colorado 290 is a beautiful fresh coastal home, imbued with the iconic Australian beach shack vibe.

Defined by minimalist clean lines, flat roofline, neutral colour palette and wooden accent tones. The Split Skillion roofline is designed for maximum energy efficiency, allowing sunlight and airflow throughout the home. The raked ceiling over the open plan kitchen and family areas creates a large, bright and airy environment. Indoor to outdoor integration creates effortless transition between family areas, and is the perfect environment for entertaining.

The front wing of the home is dedicated to the main suite, a generously sized area with a walk in robe and ensuite. Additional bedrooms throughout the home will accommodate your growing family and additional guests. Depending on your lifestyle requirements, the study and additional rooms can be used interchangeably. Enjoy organised living and easy maintenance with generous linen and storage provisions which complement a sizeable laundry, with direct access to the outdoors.

The Colorado 290 is where functionality meets style, the perfect larger family home.





Artist Impression only

MONTANA 340

Façade Shown Classic



Main Floor:	258.95m ²
Front Verandah:	35.68m ²
Rear Verandah:	44.98m ²
Total:	339.61m²
Width:	21.99m

The Montana 340 features classic home design cues, a visually calming facade with traditional colour tones, gable roof and welcoming verandah entry, combined with a surprisingly innovative internal layout for busy families.

Functional, family friendly centralised living areas mean you can cook, serve and socialise. There is also ample storage space for organised living such as a dedicated mudroom, kids retreat and study area.

These rooms can be interchanged for other uses to suit your lifestyle. Indoor to outdoor integration is great for

energy efficiency, entertaining and undercover play. For peace and quiet, retreat to the master suite or bedrooms, there is sufficient private space for all. Two entrances to the laundry allows easy access to the backyard, creating great air flow throughout the home for comfortable internal temperatures.

Do you have a growing family and a busy lifestyle? The Montana 340 is the perfect home for you.





Artist Impression only

OREGON 430

Façade Shown Ranch



Main Floor:	230.72m ²
Verandah:	199.31m ²
Total:	430.03m²
Width:	31.69m

The Oregon 430 captures the classic features of an Australian station with large open spaces, high internal ceilings and a full wrap around verandah for that country lifestyle.

Enter a dedicated entryway, where you can express your personal style, leave your boots and greet your guests. The heart of the home is dedicated to family and living areas. Enjoy cooking, dining and entertaining as a family in the open plan kitchen and dining, seamlessly integrated to the outdoor verandah for the perfect social environment. The well-planned kitchen is complemented with a walk in pantry, with direct access to the dining and verandah.

A full sized main suite offers you privacy with a large ensuite and walk in robe. Generous room sizes and robes for each family member, with access to a bathroom and toilet for extra convenience.

A flexible layout with multi use rumpus and study areas depending on your requirements. Two entrances to the laundry adds flexibility offering easy access to the backyard and linen cupboard. This plan allows great air flow throughout the home for comfortable internal temperatures. If your family loves a home that's fully connected to the outdoors - the Oregon 430 is for you.





Artist Impression only

COLORADO 476

Façade Shown Ranch



Main Floor:	241.45m ²
Verandah:	234.47m ²
Total:	475.92m²
Width:	24.98m

The Colorado 476 is ranch style home inspired by Scandinavian barn design, ideal for large families that have a taste for the country lifestyle.

Rich textures, finishes and a monochromatic theme makes a bold statement, complemented with stone cladded entry, expansive verandah and staggered facade. The key hallmark of this home is the full wrap around verandah offering multiple viewpoints.

A grand scale internal layout has dedicated family areas and private sleeping wings, drawing maximum light and airflow

throughout the entire home for energy efficiency. Retreat to the private suite complete with a walk in robe, ensuite and walk in shower. Seamless connection between kitchen, living and dining areas with direct access to the rear verandah is perfect for entertaining and the laundry has direct access to the outdoors. The study can be a mixed use room depending on your lifestyle and requirements. Multiple storage spaces throughout the home enables decluttered living.

The Colorado 476 is an elaborate design with a balanced layout for living and entertaining.



MAKE IT YOURS..



GARAGE



CARPORT

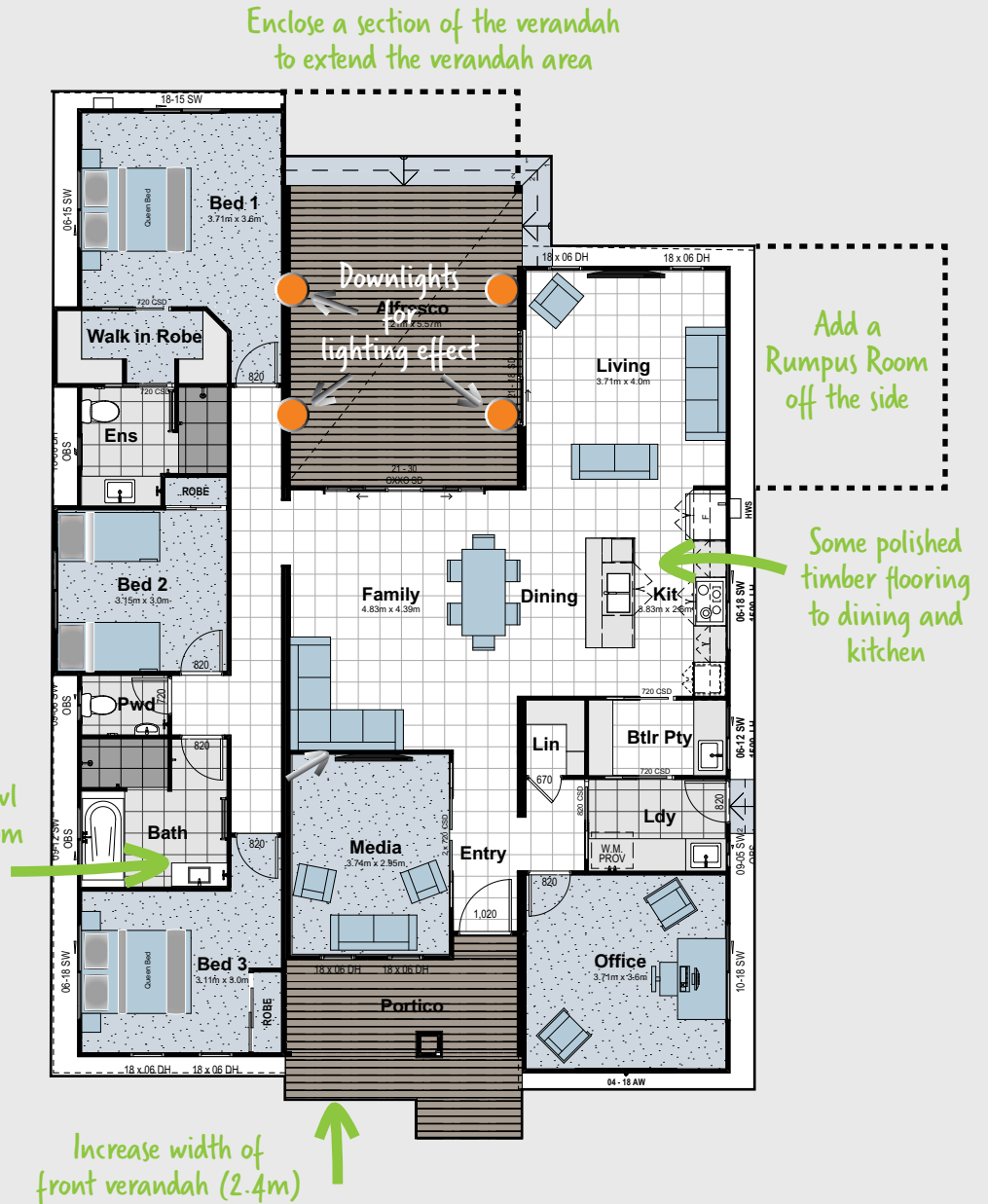
You can get creative on the floorplans just like we have!

You could upgrade your window size to the front, add a carport, add some window awnings, wall features, stained timber entry door, feature cladding, external lights, timber steps or platforms, gable infill features, external tile features, your balustrade choice, widen stairs or a toolshed.. We make it the way you want it!



WHY NOT CUSTOMISE YOUR PLAN LIKE THIS EXAMPLE?

Asset Cabins & Homes will do a concept drawing and complete one round of your changes free of charge. After drawings and costing, changes will incur a design change fee of \$330 incl. GST per design revision. We offer a concept review/design meeting to discuss plan changes.





16

15

14

13

17

8

7

18

12

11

10

9

19

5

6

21

4

3

20

2

1

3D CUTAWAY

A guide to typical Product Identification

We use quality materials to deliver performance, longevity & reliability

From the steel base to the roof, you can have the assurance your build is quality Aussie built!

We use great brands such as Bluescope Colorbond steel products, Weathertex cladding and Dulux washable paints, in total there is a majority 96%* of Australian made componentry in our build.



KEY

- | | |
|---|---|
| <p>1 Engineer Designed Footings & Stumps
- 450mm diameter x 900mm deep concrete pier footings under each stump</p> <p>2 75 x 75mm x 4.0mm galvanized steel stumps</p> <p>3 Heavy Duty Steel Chassis Beams</p> <p>4 Steel Floor Joists & Bracing</p> <p>5 Termite treated 22mm moisture resistant Particle Board Flooring</p> <p>6 Fibre Cement Flooring to wet areas</p> <p>7 Termite treated pine framing</p> <p>8 Painted Plasterboard walls & ceilings</p> <p>9 Wall Insulation Batts</p> <p>10 Termite treated hardwood Wall Bracing</p> <p>11 Sisalation Building Paper</p> | <p>12 Painted Weathertex Cladding</p> <p>13 Termite treated pine rafters</p> <p>14 Ceiling Insulation Batts</p> <p>15 Foil-backed 75mm Anticon Roofing Insulation blanket</p> <p>16 Colorbond Custom Orb roof sheeting</p> <p>17 Colorbond fascia & guttering</p> <p>18 Aluminium Window & Sliding Door Frames with Tinted Glass</p> <p>19 Maintenance free 'Composite' Decking or stained Spotted Gum hardwood decking where required</p> <p>20 Sub-floor skirting</p> <p>21 Maintenance free 'Composite' Decking or stained Spotted Gum hardwood platform steps</p> |
|---|---|

Disclaimer

Due to our policy of continual product development, Asset Cabins and Homes reserves the right to alter specifications, plans and prices referred to in this brochure without notice and without incurring any obligation.

Freecall 1800 225 224
www.ach.net.au

T: 07 5483 7144 | E: sales@ach.net.au
11 Langton Road Gympie Qld 4570

QBCC License No. 1199395

