

County COLLECTION

Clever designs for residential homes, lifestyle villages, weekenders and secondary dwellings



The Asset Advantage

When you buy from Asset, you have the benefit of over 30 years experience in the modular building industry.

We help with:

- ✓ Carefully managed production facilities to produce to your exact specifications
- ✓ Maximising energy efficiency in your new building to minimise your running costs
- ✓ Optimising sloping sites to save on scaffolding costs
- ✓ Expediting council applications and approvals
- ✓ Installation on difficult sites
- ✓ Disability and assisted access facilities
- ✓ Lower maintenance costs due to thoughtful design and detail
- ✓ On-time construction from our undercover facilities
- ✓ Streamlined manufacture process with the savings being passed straight back to you



No hidden surprises

We work on a policy of having a 'No Hidden Surprises' contract.



8 year structural warranty

We build to full residential building standards to ensure compliance with the National Construction Code and we back it with an 8 year structural warranty.



Flexible designs

We have flexibility in our designs to suit your specific needs.



Welcome to our County Collection



Thank you very much for your interest in our offering! We hope you enjoy browsing this brochure discovering style, distinction, versatility and above all, opportunities for you.

We extend an invitation to you to drop in to our display homes, and spend time with our experienced team. You will soon discover from them, how easy it is and how happy we are to cater to your specific needs.

Remember that this brochure is really a small representation of our capacity, work and options. Whatever your building project is, reach out to our friendly team, we're looking forward to working with you more!

All the best,

Ben Woodford

Managing Director

Our Company

Since 2005, Asset Cabins & Homes has been bringing quality products to the modular market. Experience, value and support are three words that express Asset Cabins & Homes today. Our mission is to provide a good building experience for our customers, create proficiency through culture driven strategies and create a work environment where everyone benefits, including the community.

As a keen spirited team, we love any idea of a challenge or a big dream... in modular form. It's what propels us to keep going, helping customers express their visions, personalities, and values. We're happy to support so many local team members.

Each one plays a vital role in bringing together your project... as we know, your team is your biggest asset!

Over 1,660 square metres of undercover construction area has helped us launch onwards and upwards to the future with the vision to be the most trusted advisor and supplier of modular cabins & homes in the industry... providing innovative, highly sought-after products and project solutions that help our clients achieve their goals. With over 1,000 buildings under the lovely Queensland sun, we invite you to join our list of happy customers!

Everyone is of value to us.







Contents

The Asset Advantage	2
Welcome	3
Contents	5
Product Reference	6
Client Care	8
Quality Assured	8
Custom Built Kitchens	9
Made for You	10
Facades	12
The Asset Approach	14

Plans

Hampshire	16
Kent	17
Hereford	18
Dorset	19
Preston	20
Essex	21
Norfolk	22
Somerset	23
Devon	24
Newton	25
Yorkshire	26
Cotswold	27
Cheshire	28
Cornwall	29
Windsor	30
Windsor Loft	31
Windsor Loft detail	32
Amended Plans	33

3D Cutaway

A guide to typical Product Identification

At Asset Cabins and Homes we use a majority (96%) of Australian made componentry in our build. From the steel base to the roof, you can have the assurance your build is quality Aussie built!



We also use the best quality materials and great brands such as Bluescope Colorbond steel products, Weathertex cladding and Dulux washable paints for our cabins and homes to deliver the performance, longevity and reliability that our customers can depend on.

Key

- 1 Engineer Designed Footings & Stumps
- 450mm diameter x 900mm deep concrete pier footings under each stump
- 2 75 x 75mm x 4.0mm galvanized steel stumps
- 3 Heavy Duty Steel Chassis Beams
- 4 Steel Floor Joists & Bracing
- 5 Termite treated 22mm moisture resistant Particle Board Flooring

- 6 FC Flooring to bathroom
- 7 Steel Framing
- 8 Painted Plasterboard walls & ceilings
- 9 Wall Insulation Batts
- 10 Sisalation Building Paper
- 11 Ceiling Insulation Batts





12 Painted Weathertex Cladding

13 Steel Rafters

14 Foil-backed 75mm Anticon Roofing
Insulation blanket

15 Colorbond Custom Orb roof sheeting

16 Colorbond fascia & guttering

17 Aluminium Window & Door Frames
with Tinted windows

18 Maintenance free 'Composite' Decking

19 Sub-floor skirting (optional)

20 Aluminium step treads & hot dipped
galvanised stringers

Client Care

Asset Cabins and Homes are committed to providing a world class product, backed up by our dedication to client satisfaction and exceptional service.

If there are any further questions you may have about your Asset product or need some guidance in planning for whatever your use will be, our team stands ready to assist you.



Quality Assured

You'll have peace of mind, because every Asset Cabin and Home has a rigid steel base and steel frame. Assembly is conducted inside our factory, not outside where exposure to the weather can cause problems later.

Of course, standard features include cyclone ratings and soil testing for structural integrity and materials choice to weather our harsh climate zones.

You can expect many years of dependable service and minimal maintenance with Asset's modular cabins and homes. They're constructed to the highest standard, and they fully comply with the relevant Queensland building legislation.

The service continues after installation, with 12 months' free maintenance and an 8-year structural warranty. All residential construction work is covered by the Queensland Building and Construction Commission Insurance scheme.



Custom built kitchens

Asset Cabins and Homes create beautiful interior environments that suit your style and budget.



Made for you

Every Asset Cabins and Homes project is different
as every home is easily custom made for its new owner.



Our expert Creative Services team can help you to choose colour schemes, materials and appliances. We'll also give you practical advice to maximise space perception and minimise maintenance.



Facades

Our County Collection features a range of facade options. Upgrade any floor plan with a facade of your choice.

Classic

The **Classic** has been an Asset favourite over and over again. With a 14° pitch to the roof, you'll find this gives the perfect cathedral ceiling on the inside. Being a single gable is not to say it has to be boring... Our design pictured to the right shows just how to wear the look beautifully. A great solution for every home design!



Timeless

Always a popular look to give your home a custom feel! The **Timeless** look emphasizes the feature in your floor plan and brings feature to the facade in more ways than one. Not only giving opportunity for multiple roof faces, this design gives potential to feature gable designs to suit any style! We love how the **Timeless** has lent itself to the traditional Queenslander look. An ideal facade look to have when character is the call of the day!



Cube*

Going all out with the modern rage look where everything is square. The **Cube** facade takes a floorplan from great to jaw dropping looks with no dramas. This facade allows for 9ft ceilings, a feature not always possible in other facade looks on modular homes! The modern feel of the **Cube** facade will have neighbours struggling to believe this is a modular home!



Skyline

A style that can never go wrong, the **Skyline** offers so much potential on the inside and out. Giving a real sense of space to the interior of the home, you'll be surprised at how much the external changes the internal! The **Skyline** has the potential to express so many different looks, and is the perfect facade to go for when you want to break away from the ordinary.



Coastal

One of the most popular facade looks, the **Coastal** is consistently a best seller! The high roof allows for a soaring ceiling, adding space and bringing a prestigious feel of size to the internals, no matter what size the home is. The **Coastal** embraces so many styles, preferences and designs that you really can't go wrong with. Add some narrow upper windows to stream some light into a living area! An aesthetically pleasing look, you'll have people glancing twice when they see a **Coastal** home.



13

Traditional*

The **Traditional** facade, utilizing a hip roof, this design has never gone out of style. A true classic look, that will never go away. This **Traditional** facade sings from the country and expresses a culturally relative feel to every Australian. A truly loved facade look!



Loft*

The **Loft** look. What more needs to be said? A favorite with every age... a **loft** adds so much character to every home it places itself on. Presenting the opportunity for dormer windows and a roofline full of character, you'll find everyone loves the look of a **Loft** home, there's something in everyone that screams - I want those dormer windows! Not limited in its potential, you can add the higher pitch and Loft to whatever design you like!

** Check with your design consultant as some of these designs work best with level ceilings throughout in lieu of cathedral ceilings*



Make it yours..

Garage

Carport

You can get creative on the following pages just like we have!

You could upgrade your window size to the front, add a carport, add some window awnings, wall features, stained timber entry door, cladding choice, external lights, timber steps or platforms, gable infill features, bullnose verandah, external tile features, balustrade choice, wider stairs, a toolshed or sub-floor skirting. We make it the way you want it!



The Asset Approach

Our 7 Steps to client satisfaction ensure your building project is a successful and positive experience with a rewarding outcome.



1 Analysis

The better we understand your needs, the more we can provide exceptional solutions; so we start with an in-depth analysis of your requirements and site.

A site visit is also taken to make sure we are aware of all aspects of your home requirements and assist you to take advantage of the best orientation to maximise environmental benefits.



2 Initial Design & Specifications

Our expert team can design and specify an initial concept based on our understanding of your needs and incorporate any additional requests.



3 Final Design & Proposal

After working together to achieve a design and specification solution that fulfils your vision, a detailed fixed price proposal is then finalised to allow you to move ahead to make your vision a reality.



4 Colour & Finishes Selections and Building Approvals

Our team can offer guidance and advice on colours and finishes plus we can tailor your project to your specific tastes and requirements.

We also take care of whatever steps the Building Approval Process requires.



5 Construction

Based on your documented selections and approvals, we then move into our streamlined construction phase. You are kept informed of progress and we welcome your inspection at any time.



6 Delivery & Installation

Once construction is complete our specialist team deliver your new cabin or home to your site and complete all installation works.



7 Final Details

After completed installation the building is inspected in detail to ensure your satisfaction and a Building Certificate is provided.





Dream home
location



Our range of fully
customisable floor plans
are designed to meet
your requirements and
exceed your expectations



Facade Shown Timeless

2 1

Hampshire

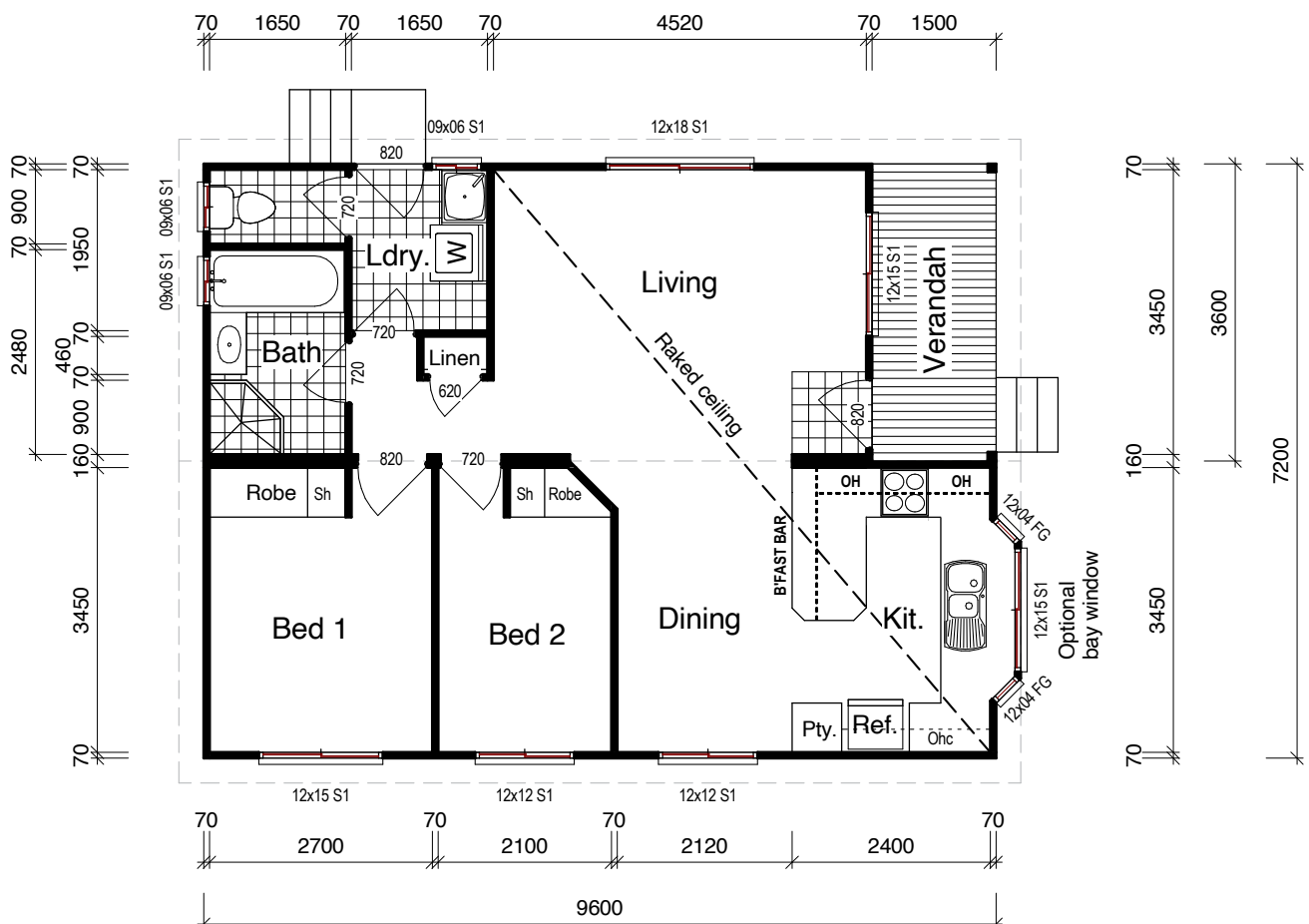
Main Floor: **63.71m²**
 Verandah: **5.41m²**
Total: 69.12m²
 Width: **7.2m**

The Hampshire is a two-bedroom premium modular home with a full measure of style.

It's apparent as soon as you enter the spacious open-plan dining/living area featuring a dramatic raked ceiling and reinforced by the fully equipped kitchen with a pantry.

The two generous bedrooms have built-in wardrobes, while the separate bathroom, toilet and full-sized laundry add to this compact home's appeal.

With a smart design utilizing the space available to the best ability, the Hampshire design home really demonstrates how living premium can easily be achieved!





17



Façade Shown Cube and Coastal combined

2 1

Hereford

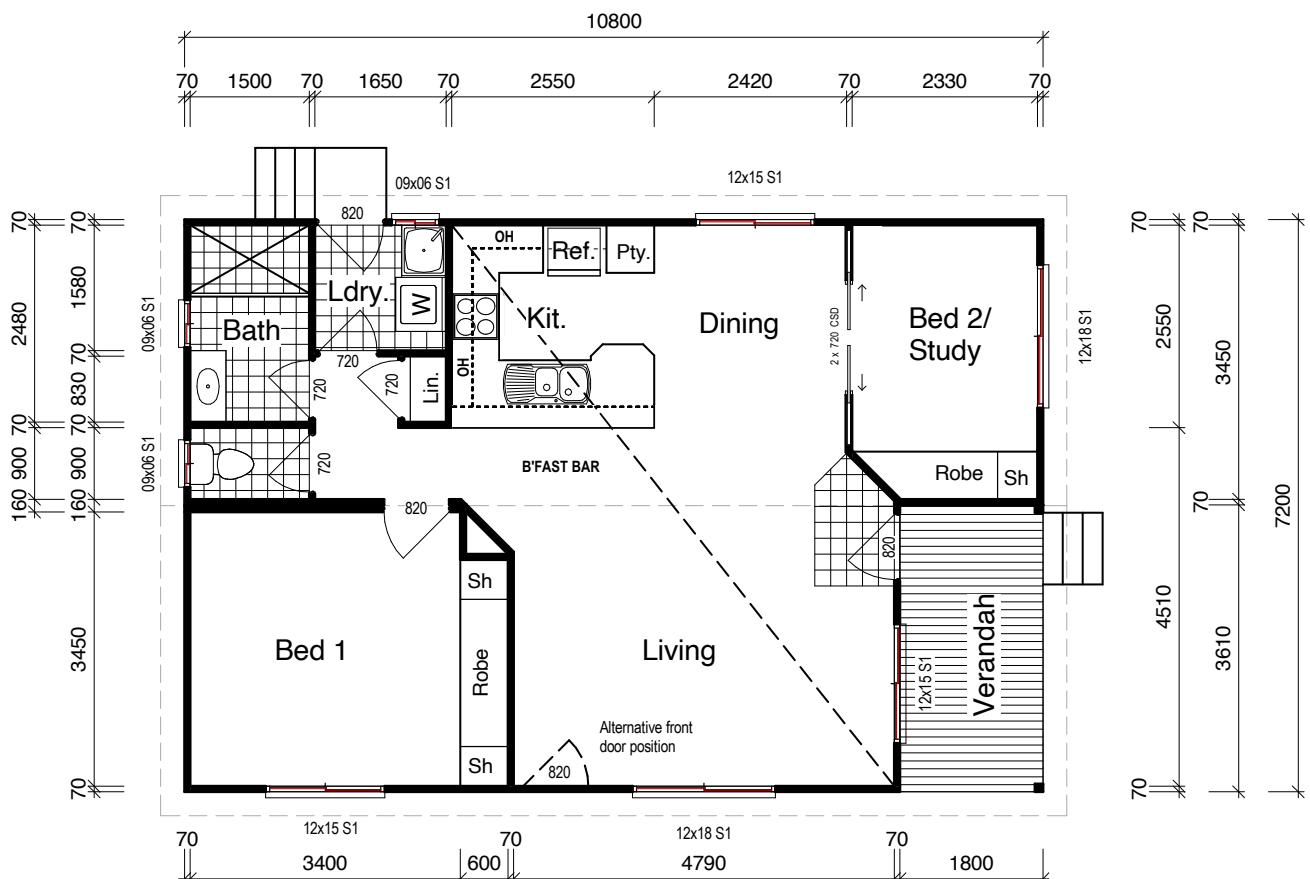
Main Floor: **71.26m²**
 Verandah: **6.50m²**
Total: 77.76m²
 Width: **7.2m**

The Hereford design home presents a full measure of style! Enter straight into an open living area, with cathedral ceilings overhead and windows to the left and right! The kitchen features an all time favourite... the breakfast bar and there's space enough for dancing!

Down the hallway is a master bedroom, bathroom with a separate toilet room beside, laundry including convenient external access, and a practically placed linen cupboard.

The second bedroom is placed at the front of the home, behind double cavity sliders – with the ability to turn it into a study or what ever you would like to use a bonus well placed room for! This exciting space features a built-in cupboard... yet another bonus!

With a window connecting the living and the verandah, the design of the Hereford home flows together beautifully, and nothing is ever too far away!





Façade Shown Cube and Skyline combined

2 1

Dorset

Main Floor: **76.66m²**
Verandahs: **5.42m²**
Total: 82.08m²
Width: **7.2m**

The Dorset design home is a versatile premium modular home with configuration alternatives ready for you to personalise!

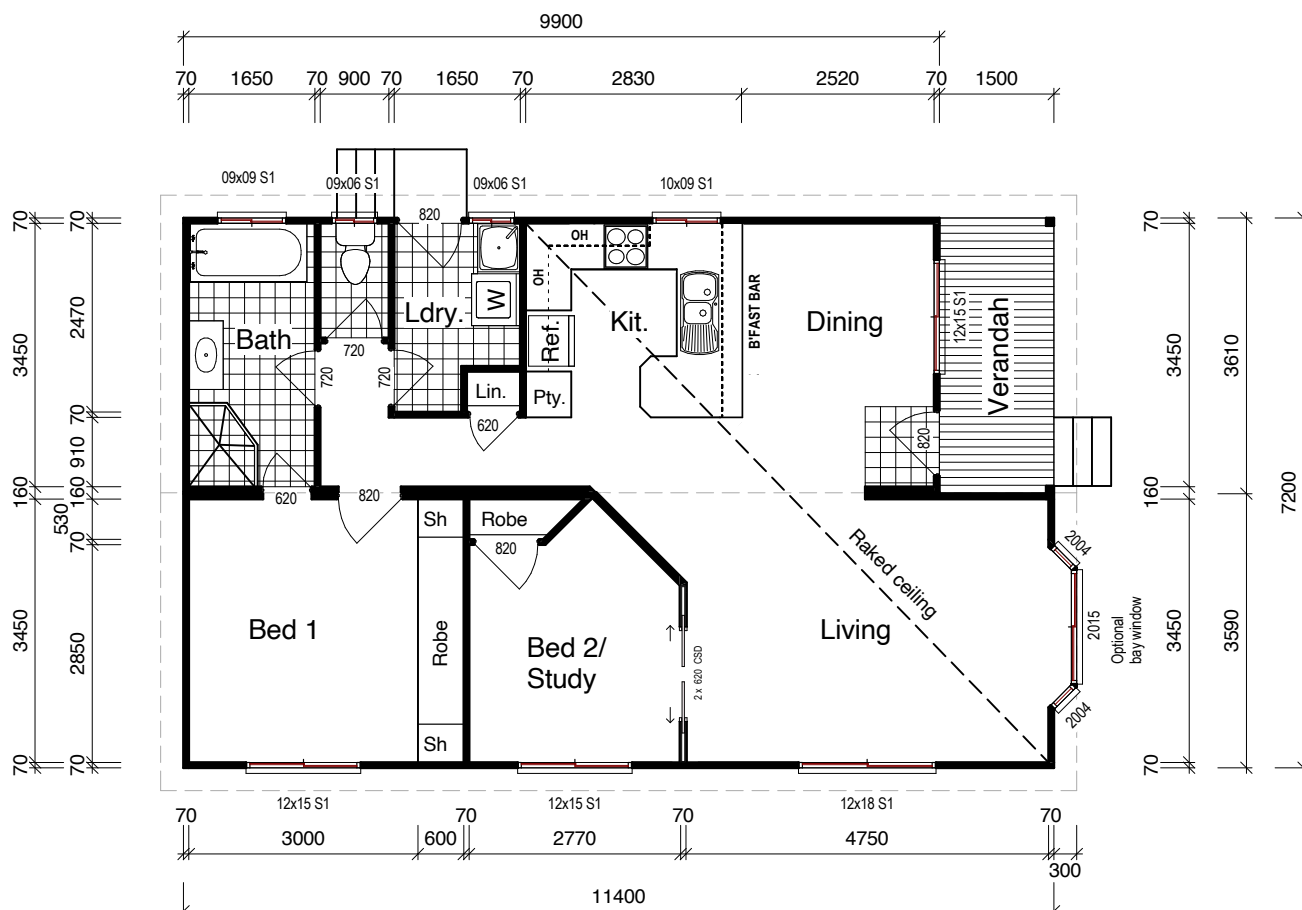
The second bedroom offers alternative solutions for every lifestyle and need, flowing beautifully into the living area, with double cavity sliders connecting the 'zones'.

A fully equipped kitchen with a pantry, double sink, overhead cupboards and a breakfast bar adjoins the spacious living and dining area under a stylish raked ceiling.

An optional bay window shown on the design can add extra style, and is well known for the light and air it brings to the living space.

The main bathroom gives the luxury of turning into an ensuite when you wish, with a convenient second entrance from the master bedroom. The toilet sits in its very own room, and the laundry gives an external access alternative...

There is plenty of storage in the Dorset, with built in robes and a linen cupboard, making this design ideal for making yourself at home.





2 1

Preston

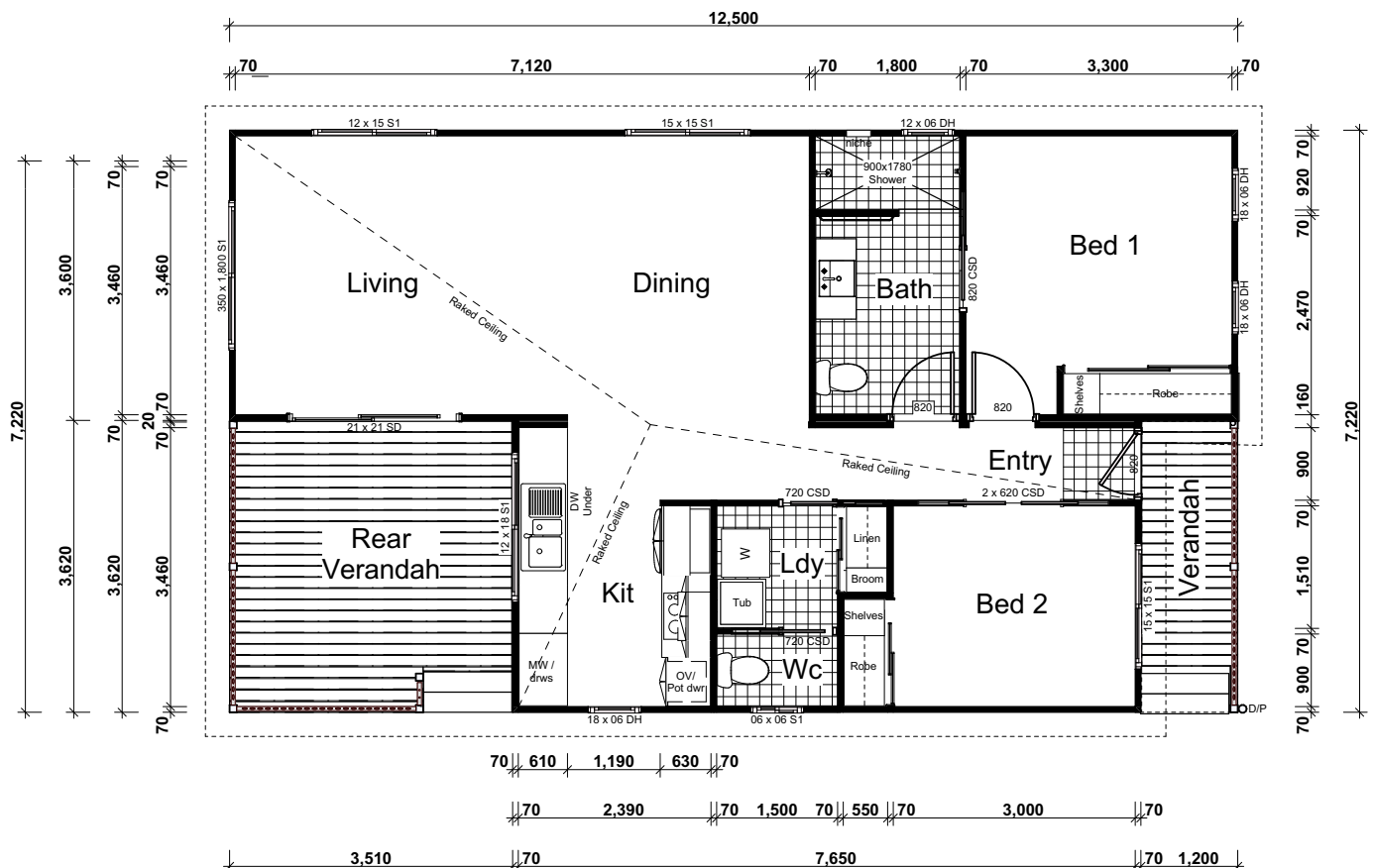
Main Floor: **73.20m²**
 Verandahs: **17.05m²**
Total: 90.25m²
 Width: **7.2m**

Our Preston design home is a popular model for obvious reasons! The impressively designed Preston features cathedral ceilings from the front door to the back, that imbue it with a fantastic sense of space and openness.

The galley style full kitchen offers practical functionality and as the main verandah is incorporated in the flow of the design it presents an ideal transition between indoors and out - it really is the perfect place for entertaining!

The Preston offers 2 toilets for additional convenience and features a spacious main bathroom replete with quality fixtures and fittings. A second toilet is always noted as a bonus, and the double cavity sliders on the entrance to bedroom 2 give an incredible feel of space.

There is plenty of storage throughout the Preston, and the sense of space in every room satisfies everyone who might walk through, an ideal design to say the least!









Façade Shown Timeless

3 1

Somerset

Main Floor: **92.25m²**
Verandahs: **10.26m²**
Total: 102.51m²
Width: **8.0m**

Like the previous generation of the Somerset family...more solutions than you can count on your fingers and toes.

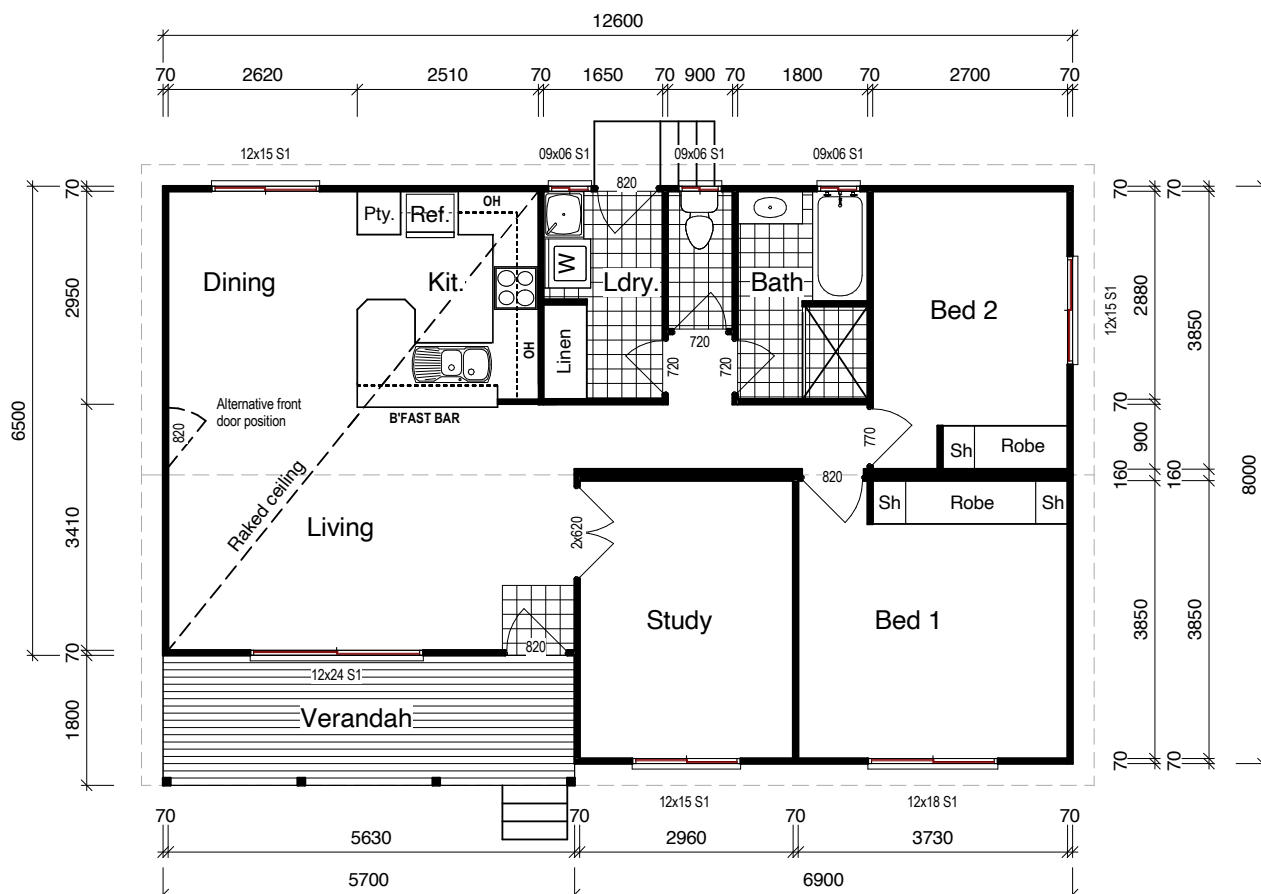
Now announcing the arrival of...the Study - versatile to no end, this room could be your media room, or sewing room, or toy room, or third bedroom, maybe even an internal man cave?... or an extension to the living room? ... Whatever You Like!

Here you have it, a bonus room of over 11 square meters and so useful!

Also note the convenient layout change to include a laundry just a tad closer to the kitchen.

With plenty of storage space including kitchen overhead cupboards, a large linen cupboard and built in robes to both bedrooms, and cathedral ceilings to the living areas... this design certainly is luxurious!

And if you would prefer to have your front entrance separate to your verandah, that is absolutely an option... check out a suggested location on the below plan!





Façade Shown Cube and Skyline combined

2 2

Devon

Main Floor: **84.22m²**
 Verandahs: **6.50m²**
 Opt Verandah: **12.96m²**
Total: 103.68m²
 Width: **7.2m**

WOW - Check out this design for an epic upgrade from its predecessor!

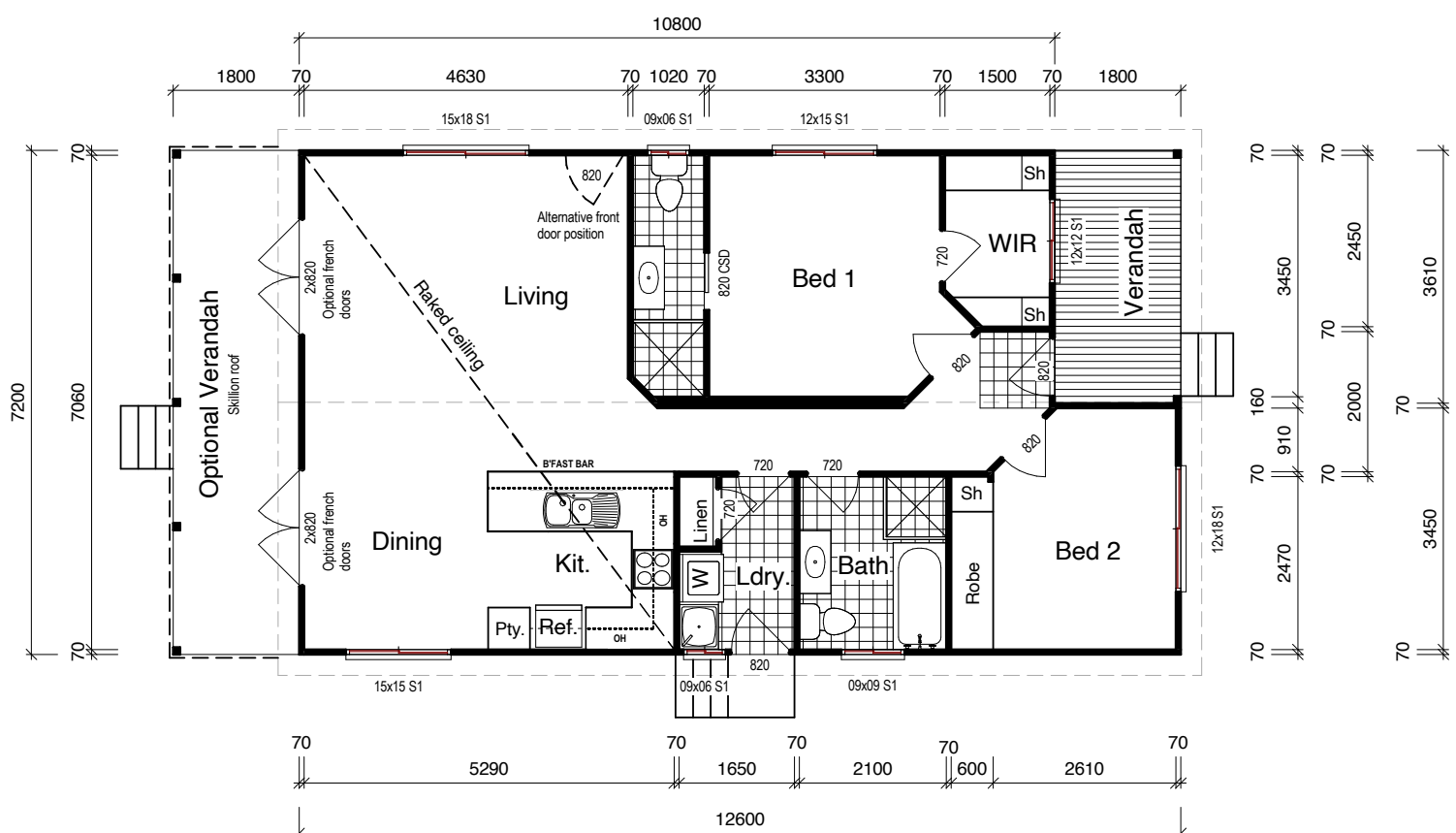
An upgraded master bedroom takes the cake... with a spacious walk-in-robe, plus an ensuite with a shower, vanity and toilet, this spells home-sweet-home.

Moving the second toilet into the master bedroom ensuite has allowed a larger main bathroom, which now accommodates a bath.

The second bedroom has also benefited from the change, with an even larger built in robe - perfect!

The Devon really gives modern vibes, with a square shape to the kitchen. All under a sweeping cathedral ceiling, that breakfast bar really does seem the ideal breakfast bar to sit at.

The Devon has plenty of potential with optional French doors opening from the spacious living area, to an optional back verandah filling out the entire width of the home... the perfect addition!





Façade Shown Classic

2  2 

Newton

Main Floor: **86.40m²**
Verandah: **21.60m²**
Total: 108.00m²
Width: **7.2m**

The Newton design lends itself beautifully to a traditional long front verandah. Enter in from the outside, and you will be greeted with an open plan living, dining and kitchen area.

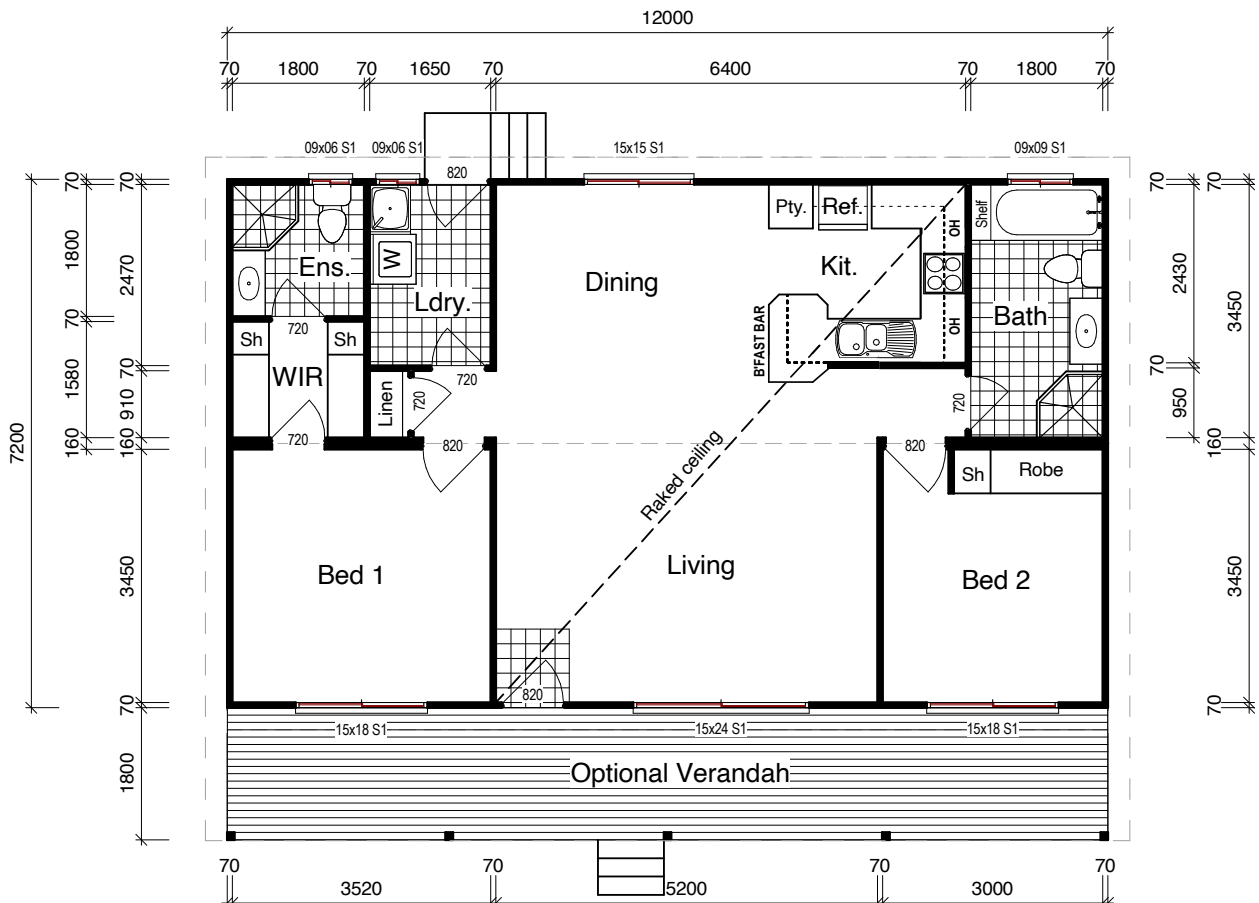
Around to the left is the master suite which features a walk-in-robe and a master only ensuite! The laundry is also to the left, with the linen cupboard conveniently placed separately to allow more room in the laundry.

On the other side of the living space is the second bedroom with a built in robe... and

the main bathroom, presenting a wall to wall bath feature at the end of the bathroom, as well as a shower, toilet and vanity.

The layout of the Newton is perfect for separating the master utilities to the guest or kids section of the home, with the communal areas sitting between the two!

With plenty of overhead storage in the kitchen, and a full height pantry, this home is set to provide for your most valuable family needs... especially when the optional verandah is added to the front!





Façade Shown Timeless

3 2

Yorkshire

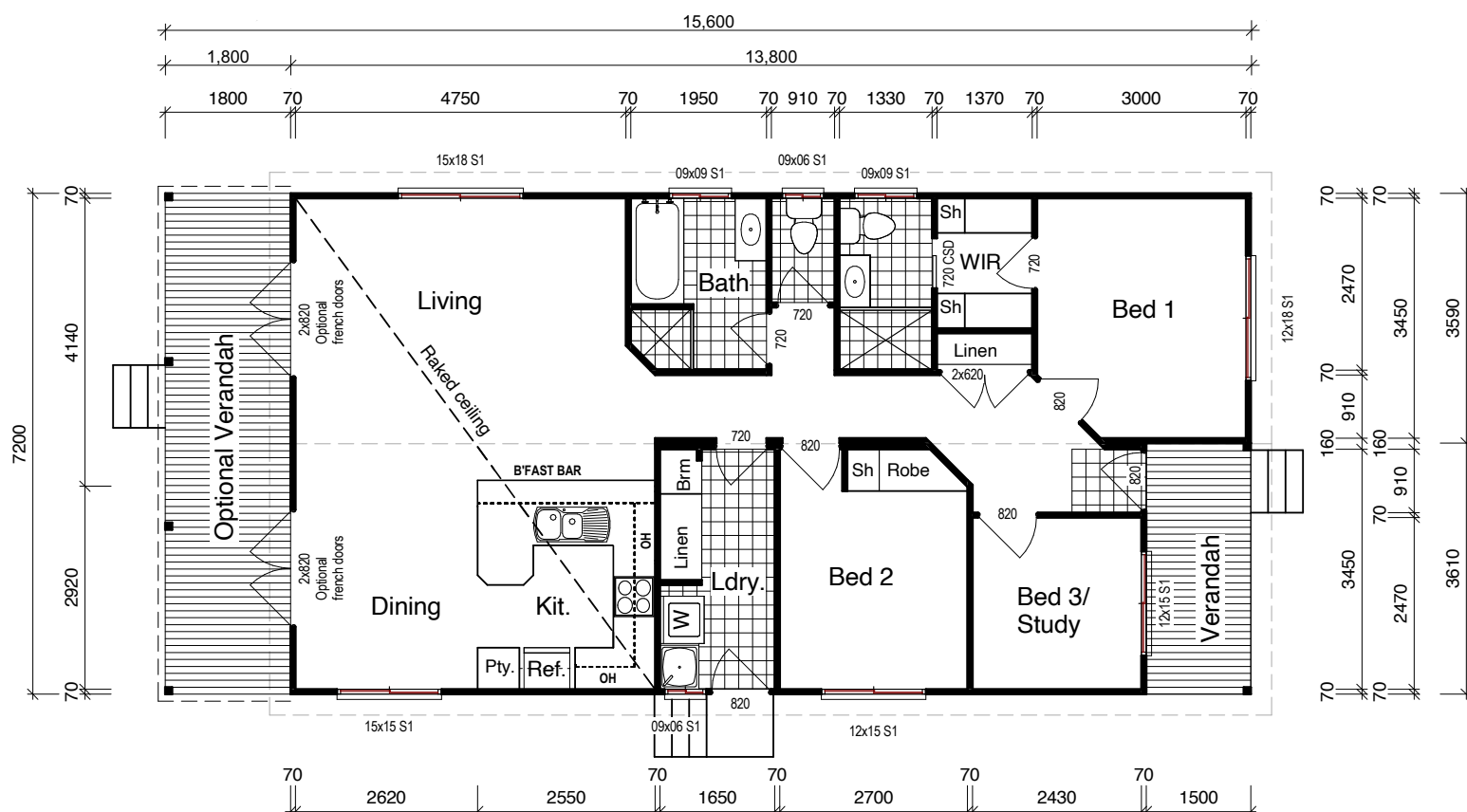
Main Floor: **93.96m²**
 Verandah: **5.40m²**
 Opt Verandah: **12.96m²**
Total: 112.32m²
 Width: **7.2m**

Introducing the Yorkshire - a feeling of luxury prevails as soon as you enter the door to the spacious entrance hallway.

A luxuriously large master bedroom sits to the right including a galley style walk-in-robe and ensuite with a dreamy large shower, plus a vanity and toilet.

Continue past the double door linen cupboard, two more bedrooms, and a spacious bathroom including a bath, to the spacious living, dining and kitchen area. Add the optional French doors to the back verandah and include the timeless vaulted ceilings in the equation and this design pretty much spells d-r-e-a-m.

Boasting more than just space... this design also presents convenient storage in the laundry, plenty of storage in the kitchen with overheads and a side entrance via the laundry.





Façade Shown Classic



Cotswold

Main Floor: **82.36m²**
 Verandahs: **12.68m²**
 Opt Verandah: **23.76m²**
Total: 118.80m²
 Width: **7.2m**

The Cotswold design home is a prime design!

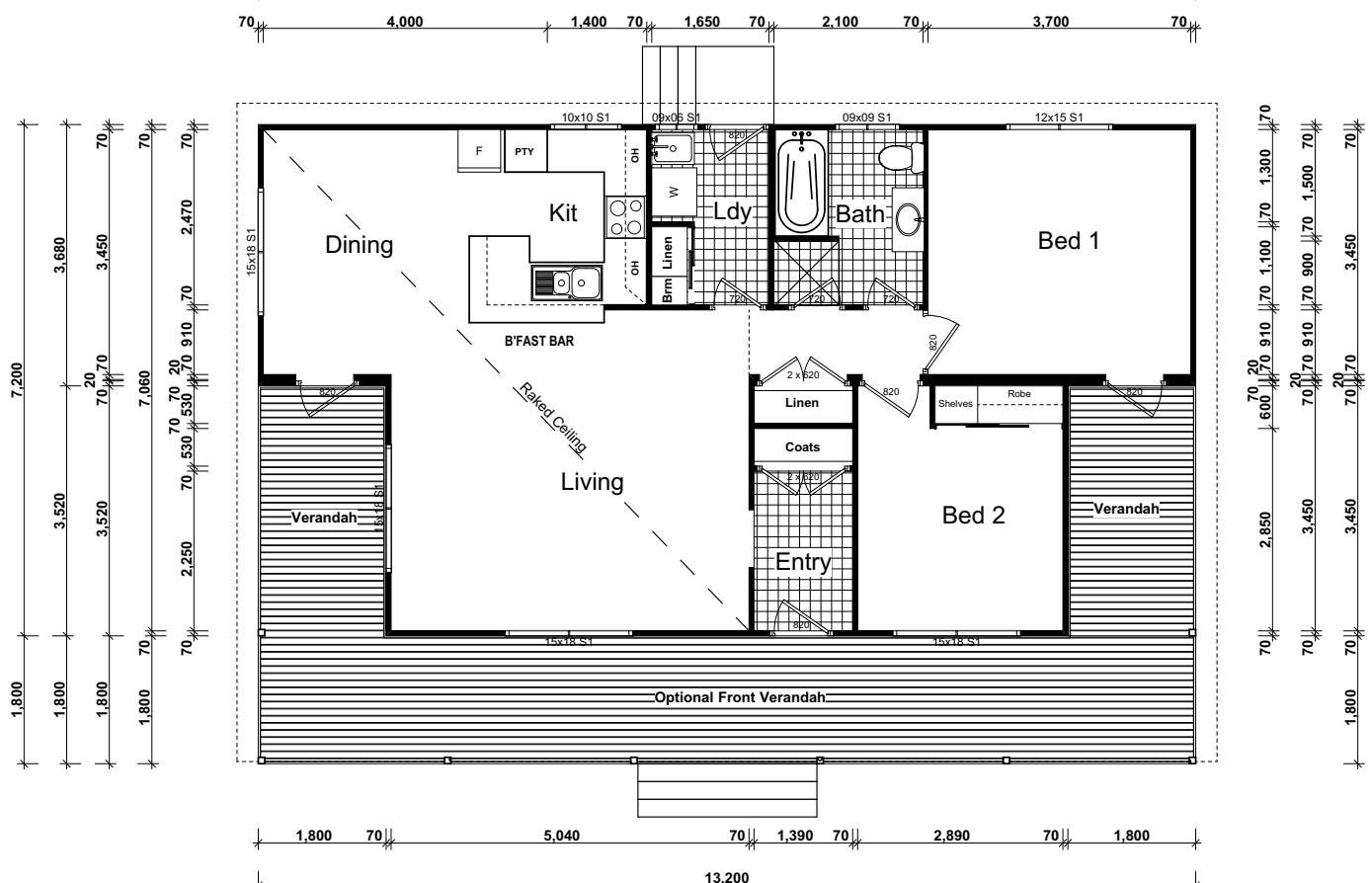
A separate entry gives this design a traditional welcome feeling... Pop your coat in the cupboard and come on through! With a raked ceiling covering the living, dining and kitchen you will feel at home straight away.

The kitchen opens into the dining and living with a practical and stylish breakfast bar, and the living and dining both connect well to the verandah.

The optional front verandah gives a homestead feel, wrapping around 3 sides of the home, so you are bound to capture a view.

Back inside, the master bedroom features the option of having its own access to the verandah... a must have on the wishlist!

With plenty of storage in the linen, coat cupboard, overhead kitchen cabinetry, laundry cupboard and built in robes in the bedrooms, the Cotswold does not disappoint!





3  2 

Cornwall

Main Floor: **98.28m²**
Verandah: **6.34m²**
Opt Verandah: **26.15m²**
Total: 130.77m²
Width: **7.2m**

This design allows for a separate dining to living area... what a prestigious feel!

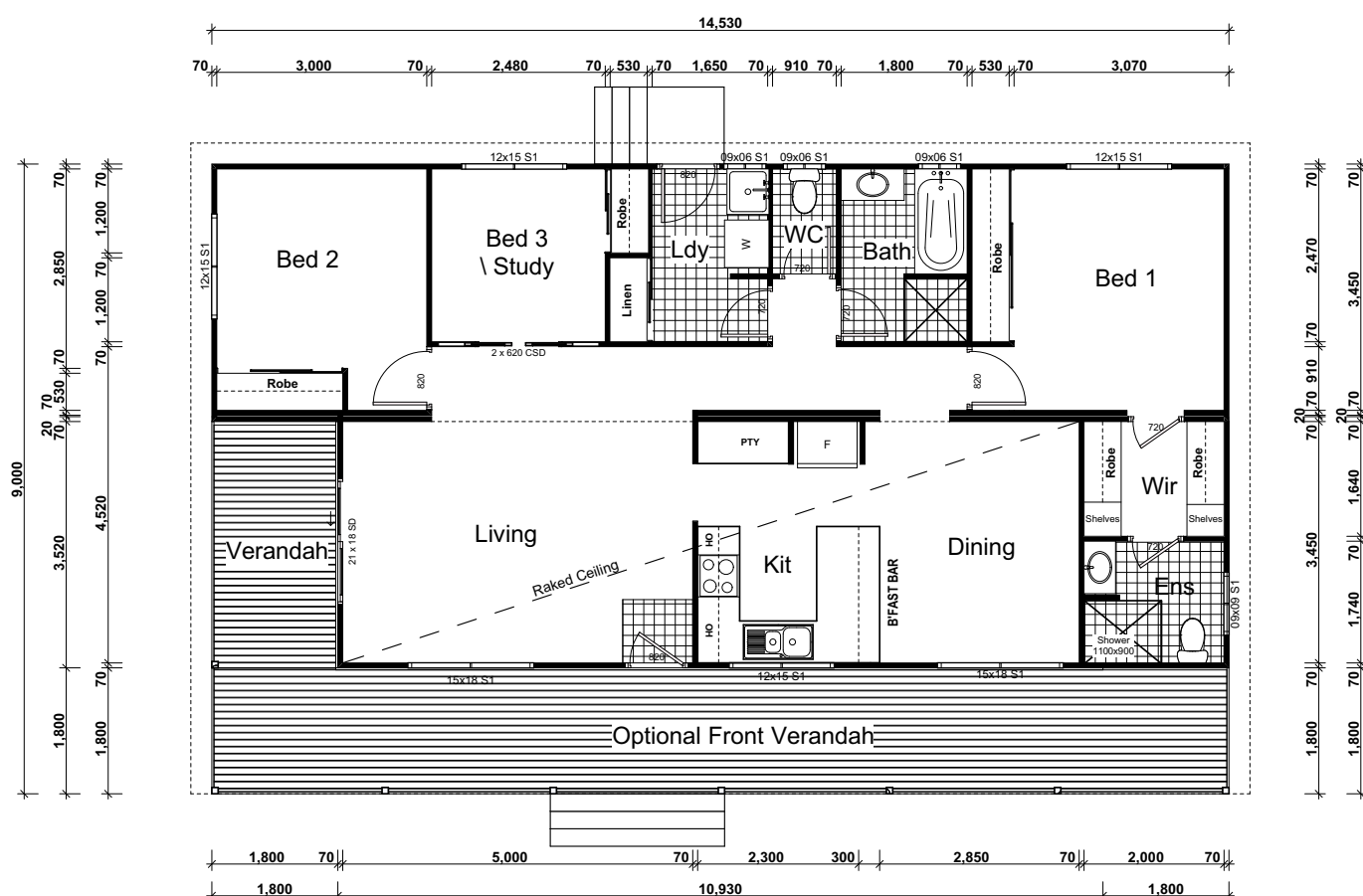
Having all the living areas across the front of the home, brings the optional front verandah into perspective, with living and outdoor areas flowing together through windows along the length of the balcony, and double sliding glass doors.

In the master bedroom, you'll be feeling spoilt with the walk-in-robe and ensuite, complete with a rectangle shower, vanity and toilet!

The third bedroom is positioned just off the living space behind double cavity sliders, proving itself to be a versatile solution for all lifestyle needs.

There are plenty of useful storage solutions in the Cornwall design home, with an extra large pantry in the kitchen, and built-in robes in the bedrooms, as well as a linen cupboard in the laundry.

There is a lot to love when it comes to the Cornwall with raked ceilings and spacious living, this is an optimal design!





Façade Shown Timeless with a higher 24 degree roof pitch

3+  2 

Windsor

Main Floor: **103.68m²**
Opt Verandah: **34.56m²**
Total: 138.24m²
Width: **7.2m**

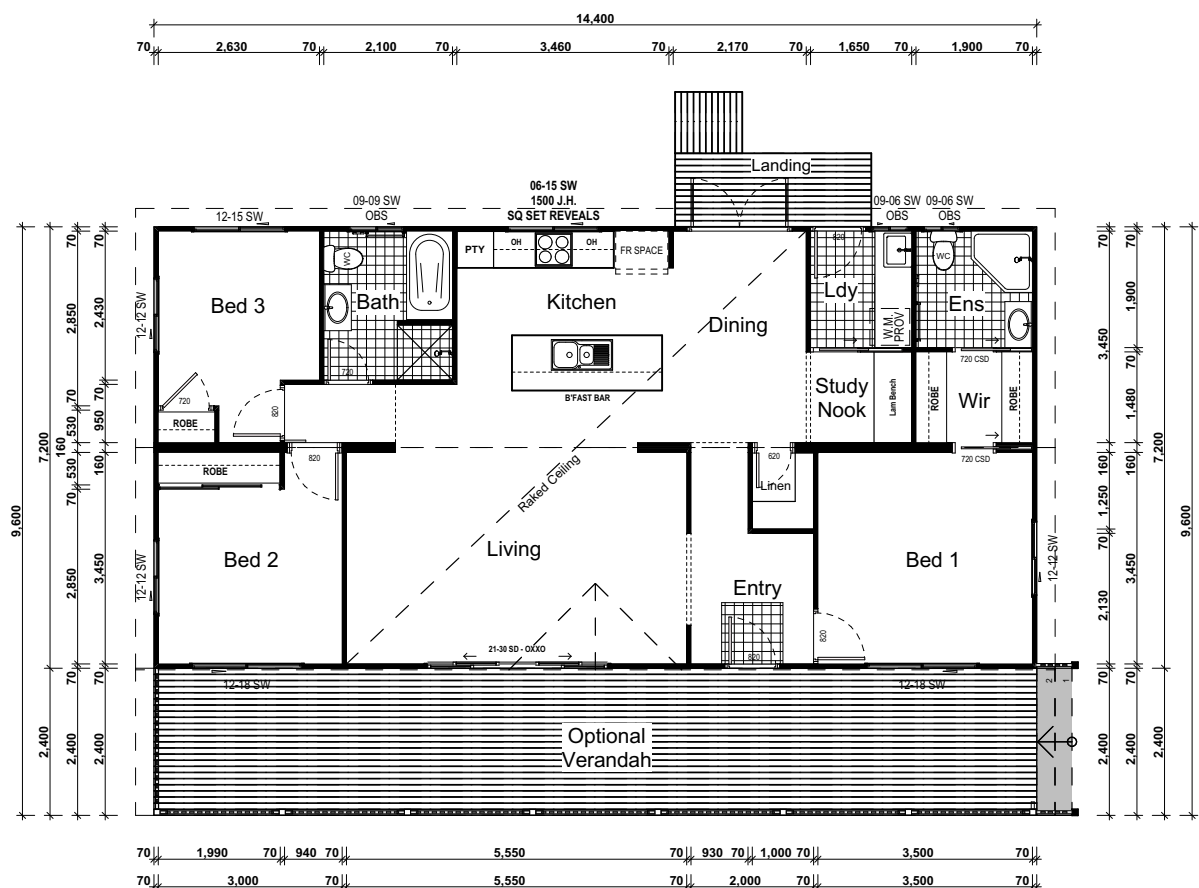
Once again, another design leaves us in awe. The Windsor design home brings a feeling of tradition, with modern functionality.

Enter in the front door, with the master suite to the right, and a large opening to the living space on the left. Through the walkway opening you will find the dining room and modern galley style kitchen with an island bench and breakfast bar. Light streams into the dining and living areas through double doors while a dramatic raked ceiling over the entire living zone gives an exceptional feel of space and luxuriousness.

Just off the dining room is a conveniently placed study nook, a walk-in linen cupboard, and the laundry, with plenty of bench space and an external entrance for added convenience!

With so many features, the second and third bedrooms can easily be zone out spaces for the kids or the visitors, and a full bathroom includes a well positioned bath.

The Windsor design home really is one for all ages to call 'home'.





Facade Shown Loft with Dormer Gables and a 40 degree roof pitch



Windsor Loft

Main Floor: **103.68m²**
 Opt Verandah: **25.92m²**
 Opt Loft: **45.62m²**
Total: 175.22m²
 Width: **7.2m**

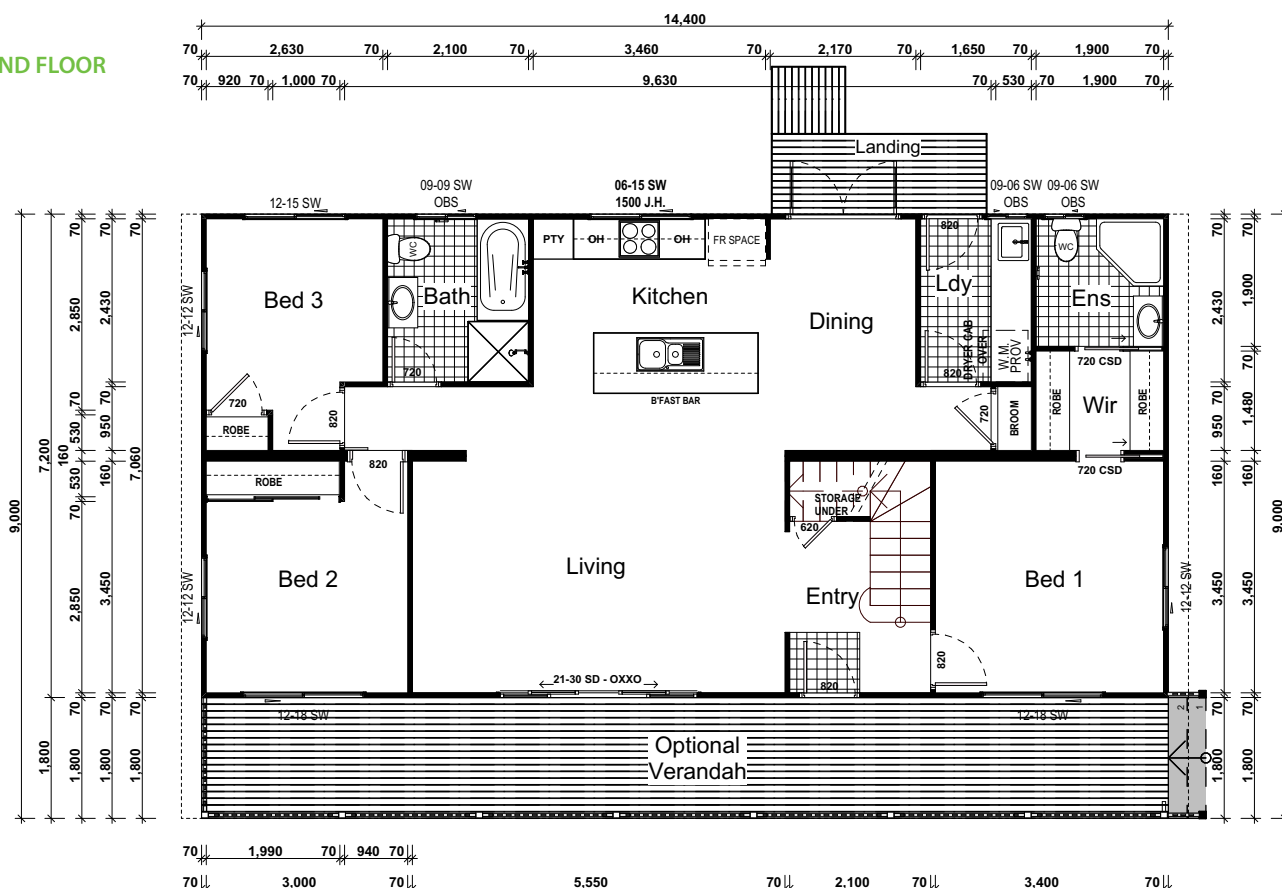
Nothing screams luxury more than opening the front door to a towering set of stairs leading to another entire space beyond view.

To the right of the stairs is a beautiful master suite complete with a walk in robe and ensuite. Through the wide and open walk way into the living area, you are heartily welcomed into a spacious living room hosting double glass doors out to the optional verandah. Towards the back of the home, you will find a modern galley style kitchen with an island bench and a breakfast bar, and just to the right

is some more dining space with double doors streaming light in and leading outside. There is a spacious laundry with generous amounts of bench space, and also plenty of storage in convenient locations around the home.

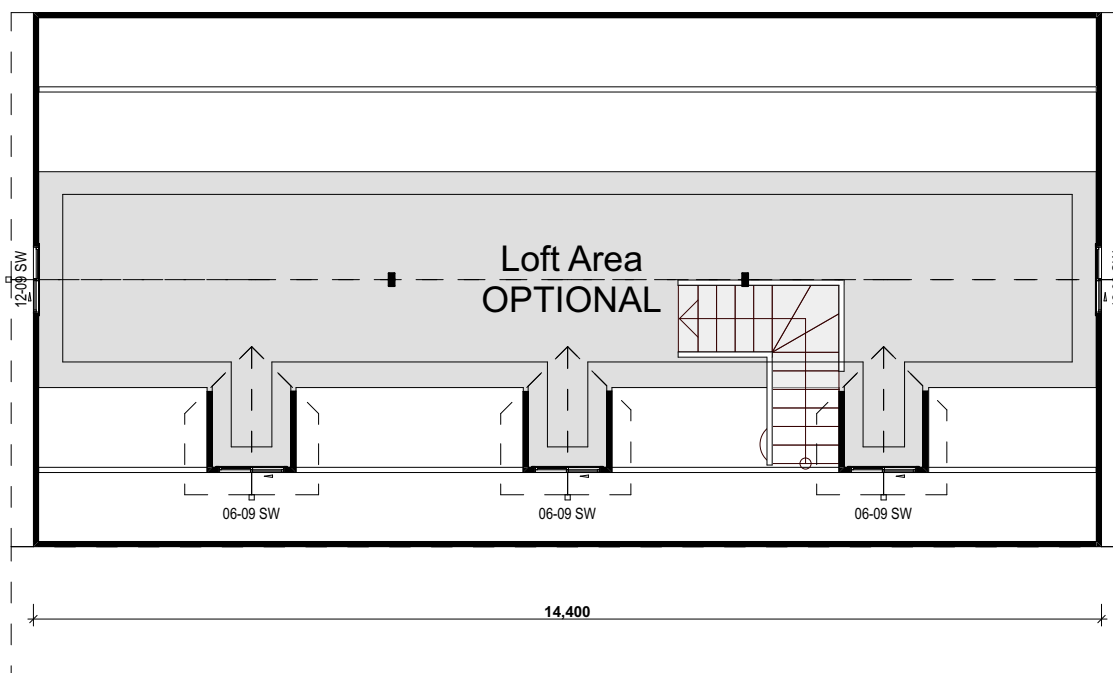
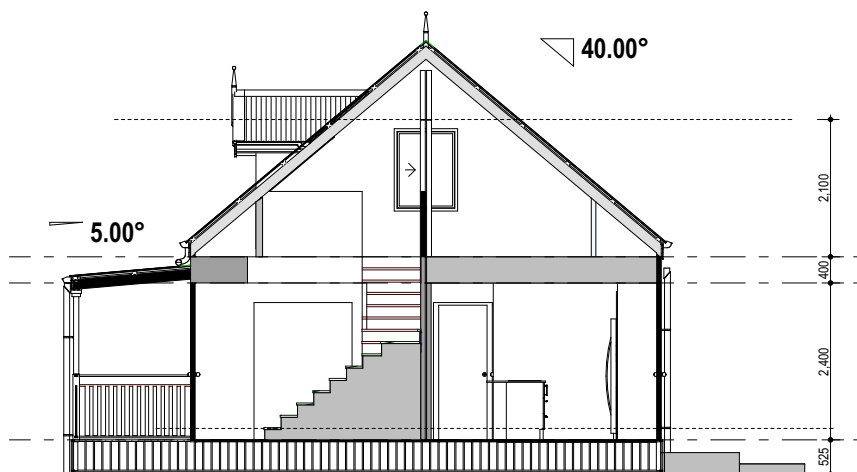
Last, but not least, The Loft. There is no other design like this. Giving style to both the inside and outside, the loft is a step up in all directions! The space can be used to cater to so many needs, it really is up to your creativity and lifestyle - perhaps play zones, home offices, sleeping quarters or media rooms, let your imagination go wild!

GROUND FLOOR





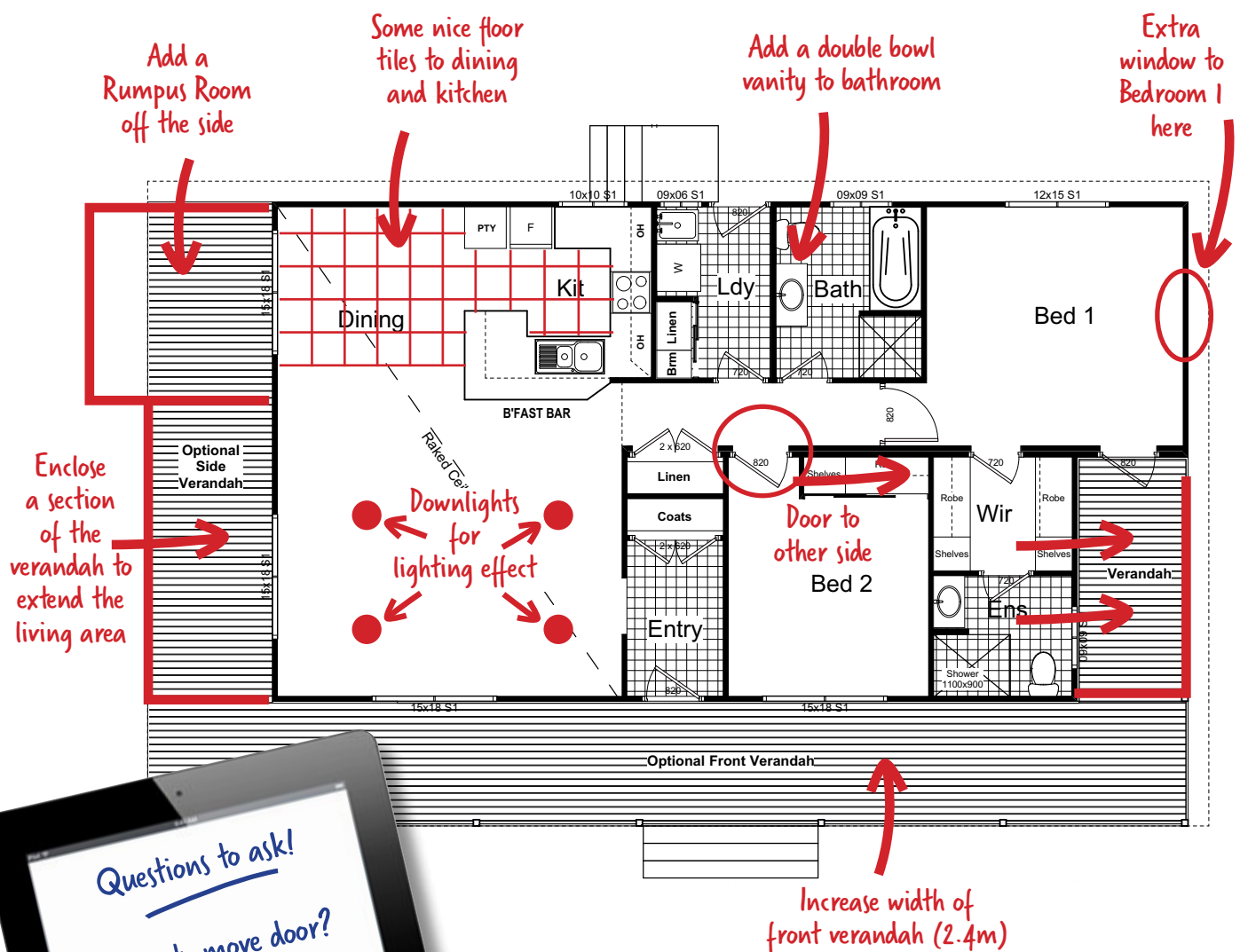
Add in a loft to almost any of our designs



Amended Plans

(Remember, with Asset Cabins and Homes you're not charged for changes unless materials/labour costs increase.)

Why not customise your plan like this example?



Questions to ask!

- Okay to move door?
- Built in cupboard in family room?
- Sliding door to laundry?
- Add a bay window?



Freecall 1800 225 224

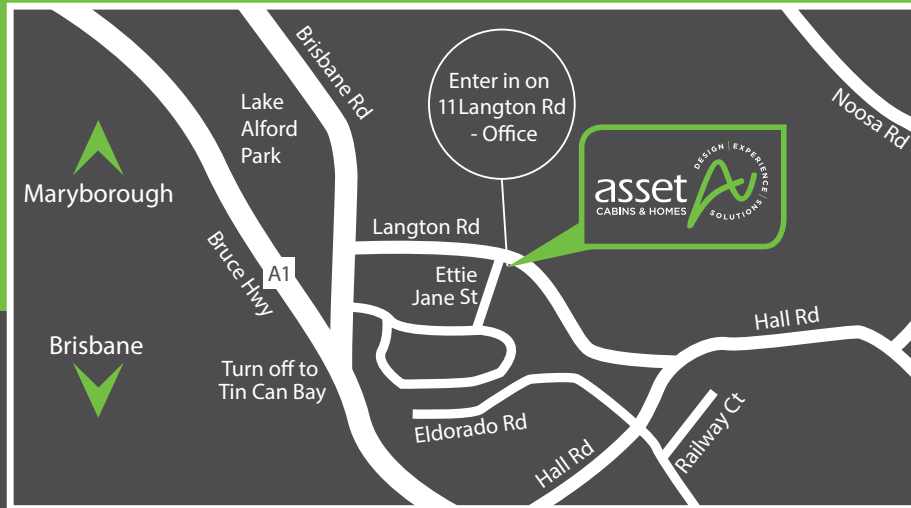
T: 07 5483 7144 | E: sales@ach.net.au | www.ach.net.au
11 Langton Road Gympie Qld 4570

Talk to Asset Cabins and Homes about:

- ✓ *The support of a Company that is more than just a manufacturer, and the confidence that your project is helped from approvals through to project completion with a qualified builder.*
- ✓ *The difference that 30 years of experience and manufacturing truly makes to the quality of the products you buy.*
- ✓ *The flexibility of our customisable home designs to meet your specific needs.*
- ✓ *The benefits that our professional solutions make to your building project.*







Talk to Asset Cabins and Homes about:

- ✓ *The support of a Company that is more than just a manufacturer, and the confidence that your project is helped from approvals through to project completion with a qualified builder.*
- ✓ *The difference that 30 years of experience and manufacturing truly makes to the quality of the products you buy.*
- ✓ *The flexibility of our customisable home designs to meet your specific needs.*
- ✓ *The benefits that our professional solutions make to your building project.*



Freecall 1800 225 224
www.ach.net.au

T: 07 5483 7144 | E: sales@ach.net.au
 11 Langton Road Gympie Qld 4570

QBCC License No. 1199395



Disclaimer

Due to our policy of continual product development, Asset Cabins and Homes reserves the right to alter specifications without notice and without incurring any obligation.